

CITY OF MUSKEGON
PLAN AND PROFILE OF PROPOSED
KEATING AVE,
INDUSTRIAL BLVD. TO
PORT CITY BLVD. HMA

JOB NUMBER:H 92324



West Michigan's Shoreline City
www.shorelinecity.com

SHEET INDEX

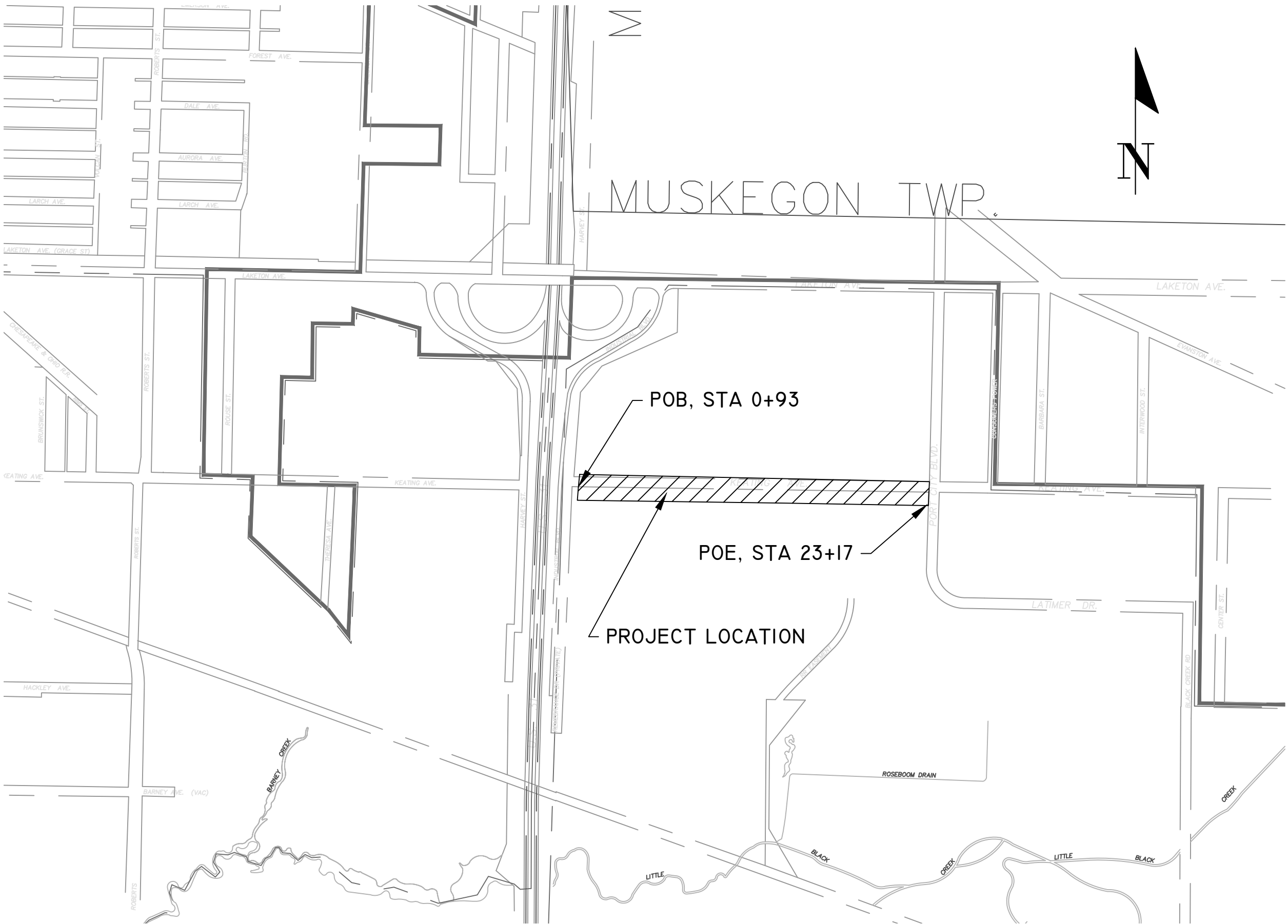
SHEET	DESCRIPTION
1.	TITLE SHEET
2.	PROPOSED PROFILE
3.	TRAFFIC CONTROL PLAN

NOTE:

THE IMPROVEMENTS COVERED BY THESE PLANS SHALL BE DONE IN ACCORDANCE WITH THE MICHIGAN DEPARTMENT OF TRANSPORTATION 2020 STANDARD SPECIFICATIONS FOR CONSTRUCTION AND THE 2011 MICHIGAN MANUAL OF UNIFORM TRAFFIC CONTROL DEVICES. THESE IMPROVEMENTS HAVE BEEN DESIGNED IN ACCORDANCE WITH THE 2011 AASHTO GUIDELINES.

GENERAL NOTES:

- EXISTING CONDITIONS INCLUDING ELEVATIONS ARE SUBJECT TO CHANGE DUE TO CONSTRUCTION OUTSIDE THE CONTROL OF THE CITY OF MUSKEGON. CONTRACTOR IS TO VERIFY EXISTING CONDITIONS OF THE SITE, MATCH ALL EXISTING MEETS AND COORDINATE WORK ACTIVITIES WITH NEIGHBORING CONTRACTORS.
- UPON REQUEST AND APPROVAL, THE CONTRACTOR MAY OBTAIN A WATER SUPPLY FROM THE CITY OF MUSKEGON FIRE HYDRANTS AT NO COST, PROVIDED THAT THEY FOLLOW THE CONDITIONS OF THE CITY WATER DEPARTMENT.
- FOR PROTECTION OF UNDERGROUND UTILITIES, THE CONTRACTOR SHALL CALL MISS DIG, 1-800-482-7171, A MINIMUM OF 3 WORKING DAYS EXCLUDING SATURDAYS, SUNDAYS, AND HOLIDAYS PRIOR TO EXCAVATING IN THE VICINITY OF ALL UTILITY LINES. ALL MISS DIG PARTICIPATING MEMBERS WILL THUS BE NOTIFIED, THIS DOES NOT RELIEVE THE CONTRACTOR THE RESPONSIBILITY OF NOTIFYING OWNERS WHO MAY NOT BE PART OF THE MISS DIG ALERT SYSTEM.
- PUBLIC UTILITIES OF ALL TYPES HAVE BEEN SHOWN ON THE PLAN USING AVAILABLE INFORMATION, BUT ARE NOT GUARANTEED AS ACCURATE OR THAT UTILITIES OTHER THAN THOSE SHOWN ARE NOT PRESENT.
- THE CONTRACTOR SHALL SAW CUT ALL MEETS RELATIVE TO SIDEWALK OR PAVEMENT CONSTRUCTION UNLESS WAIVED BY THE ENGINEER. PAYMENT FOR SAW CUTTING SHALL BE INCLUDED IN THE PAYMENT FOR THE PAY ITEMS PAVT, REM, MODIFIED, CURB AND GUTTER, REM, AND/OR SIDEWALK, REM. NO ADDITIONAL PAYMENT WILL ALLOWED FOR SAW CUTTING.
- THE CONTRACTOR SHALL PREVENT EROSION AND CONTROL SEDIMENTATION ASSOCIATED WITH THE PROJECT. KEEP SEDIMENTATION WITHIN THE RIGHT OF WAY (OR CONSTRUCTION LIMITS) AND OUT OF SURFACE WATERS. CONSTRUCT AND MAINTAIN TEMPORARY EROSION AND SEDIMENTATION CONTROLS, TO INCLUDE INLET PROTECTION, FABRIC DROPS ON ALL INLET STRUCTURES NEW AND EXISTING AND INSTALL TEMPORARY EROSION, SEDIMENTATION CONTROLS AS DIRECTED BY THE ENGINEER. THE CONTRACTOR SHALL REMOVE ON A DAILY BASIS SOIL TRACKED ONTO EXISTING PAVED ROADS, (VACUUM METHODS ARE PREFERRED BUT BROOM SWEEPING IS ACCEPTABLE IF THE MATERIAL IS REMOVED) THE CONTRACTOR SHALL INSPECT ALL SOIL EROSION / SEDIMENTATION CONTROL MEASURES ON A WEEKLY BASIS OR AFTER EACH RAIN FALL EVENT, CLEAN REPAIR, OR REPLACE, AS NECESSARY, TO ENSURE PROPER FUNCTION. ALL SOIL EROSION / SEDIMENTATION CONTROLS SHALL REMAIN UNTIL ALL DISTURBED AREAS ARE STABILIZED. ALL SOIL EROSION / SEDIMENTATION CONTROL, EXCEPT FOR THE EROSION CONTROL, INLET PROTECTION, FABRIC DROP AND SILT FENCE SHALL BE INCLUDED WITH THE PAY ITEM PROJECT CLEAN UP. NO OTHER PAYMENT SHALL BE MADE.



STANDARD PLANS

R-28-J SIDEWALK RAMP AND DETECTABLE WARNING DETAILS
R-29-I DRIVEWAY OPENINGS & APPROACHES AND CONCRETE SIDEWALKS
R-30-G CONCRETE CURB & GUTTER
R-80-E GRANULAR BLANKET, UNDER DRAINS, OUTLET ENDINGS FOR UNDERDRAINS, AND SEWER BULKHEADS
R-96-E SOIL EROSION & SEDIMENTATION CONTROL MEASURES

TRAFFIC/SAFETY STANDARD PLANS

WZD-100-A GROUND DRIVEN SIGN SUPPORTS FOR TEMPORARY SIGNS
WZD-125-E TEMPORARY TRAFFIC CONTROL DEVICES

UTILITIES

ELECTRIC
JOEL BROWN
CONSUMERS ENERGY
700 E STERNBERG ROAD
NORTON SHORES, MI 49441
(231) 332-2682

TELEPHONE
DAVID B. FLERMOEN
FRONTIER COMMUNICATIONS
860 TERRACE STREET
MUSKEGON MI 49440
(231) 727-1319

NATURAL GAS
VINCENT DUCA
DTE ENERGY
2359 OLTHOFF DRIVE
MUSKEGON MI 49444
(231) 578-0488 (CELL)

CABLE
COMCAST
TBA

WATER & SEWER
DAVE BAKER
CITY OF MUSKEGON - DPW
1350 E KEATING AVENUE
MUSKEGON MI 49442
(231) 724-4100



Know what's below.
Call before you dig.

3 WORKING DAYS
EXCLUDING SAT, SUN & HOLIDAYS
BEFORE YOU DIG
CALL MISS DIG

CONSTRUCTION INCLUDES .42 MILES OF HMA MILLING AND HMA PAVING IN THE CITY OF MUSKEGON, MUSKEGON COUNTY.

PREPARED UNDER THE SUPERVISION OF:

DAN VANDERHEIDE, P.E.
CITY ENGINEER

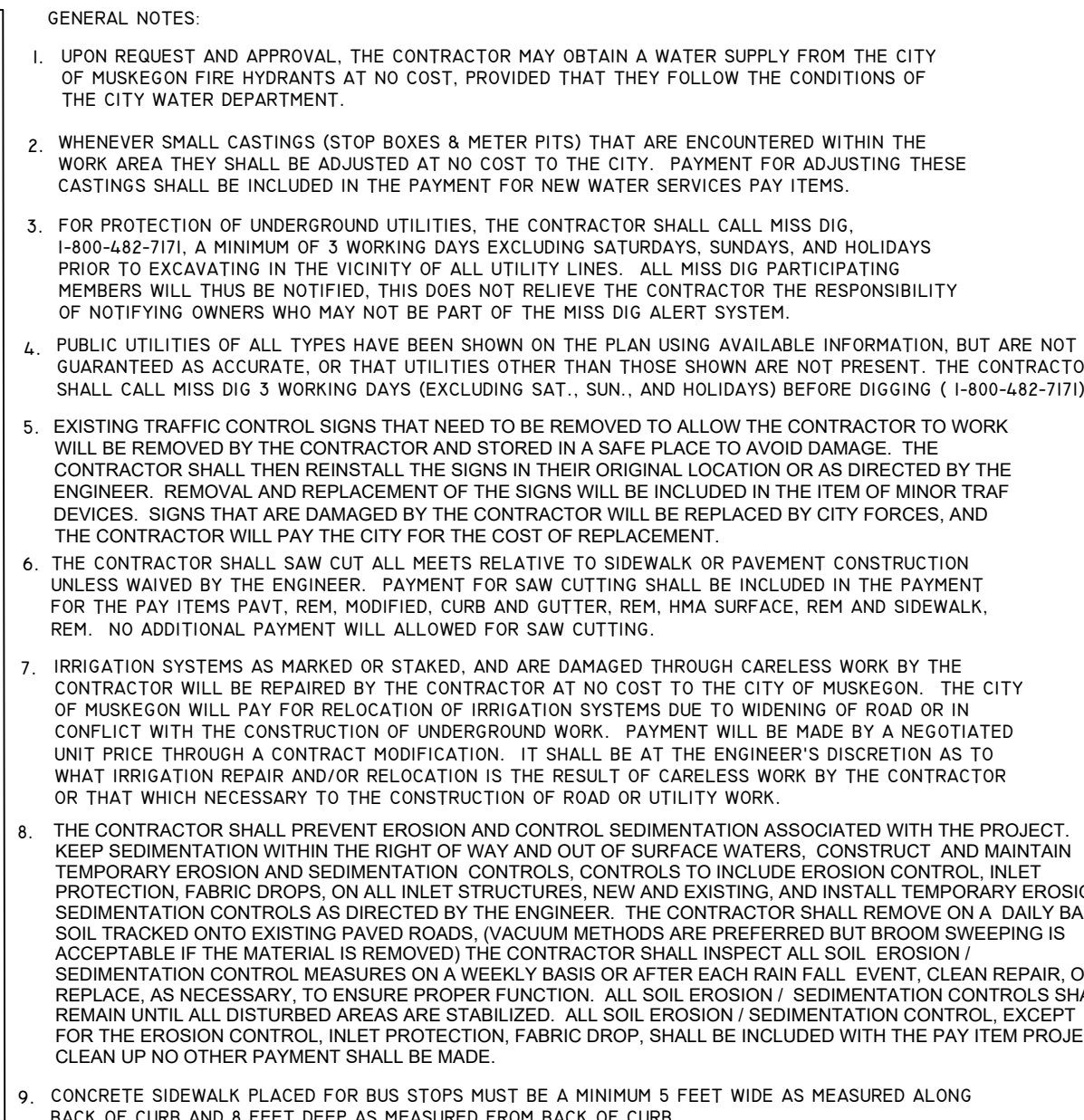
CITY OF MUSKEGON
ENGINEERING DEPARTMENT
1350 E KEATING AVE
MUSKEGON MI 49442

REGISTRATION NUMBER

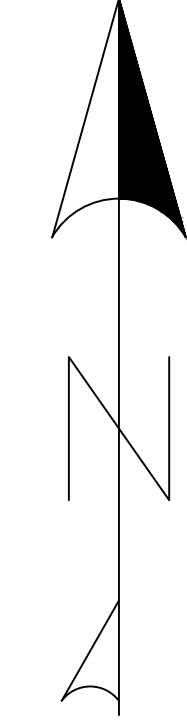
CITY OF MUSKEGON
OFFICE OF THE CITY ENGINEER

KEATING AVE, INDUSTRIAL BLVD.
TO PORT CITY BLVD. HMA

DRAWN K PARKER 7/2022	REVISION		SURVEY		PROJECT NO
CHECKED	REVISION		AS-BUILT		
APPROVED	REVISION				SHEET NO. 01 OF 03



QUANTITIES THIS SHEET			
DESCRIPTION	QUANTITY	UNIT	
COLD MILLING HMA SURFACE, 4 INCH	8193	SYD	
DR STRUCTURE, COVER ADJ, CASE 1 MODIFIED	9	EA	
DR STRUCTURE COVER, TYPE B, MODIFIED	9	EA	
HMA, 4EML, LEVELING	910	TON	
HMA, 4EML, TOP COURSE	910	TON	
EROSION CONTROL, INLET PROTECTION, FABRIC DROP	16	EA	



SIGN, TYPE B, TEMPORARY					
SIGN	DESCRIPTION	QUANTITY	DIM	AREA	TOTAL
R11-4	ROAD CLOSED TO THRU TRAFFIC	2	30X60	12.5 SFT	37.5
W20-3	ROAD CLOSED AHEAD	3	48X48	16 SFT	48

SIGN, TYPE B, TEMPORARY, SPECIAL			
DESCRIPTION	QUANTITY	AREA	TOTAL
SS-1	3	4 SFT	12 SFT

Diagram of a rectangular sign for "KEATING AVE." The sign is 48" wide and 12" high. It is positioned 6" from the left edge of the frame.

QUANTITIES THIS SHEET		
DESCRIPTION	QUANTITY	UNIT
MINOR TRAFFIC DEVICES	1	LS
BARRICADE, TYPE III, HIGH INTENSITY, DOUBLE SIDED, LIGHTED, FURN	2	EA
BARRICADE, TYPE III, HIGH INTENSITY, DOUBLE SIDED, LIGHTED, OPER	2	EA
PLASTIC DRUM, FLUORESCENT, FURN	20	EA
PLASTIC DRUM, FLUORESCENT, OPER	20	EA
SIGN, TYPE B, TEMP, PRISMATIC, FURN	86	SFT
SIGN, TYPE B, TEMP, PRISMATIC, OPER	86	SFT
SIGN, TYPE B, TEMP, PRISMATIC, SPECIAL, FURN	12	SFT
SIGN, TYPE B, TEMP, PRISMATIC, SPECIAL, OPER	12	SFT
INTERSECTION MAINTENANCE	2	EA

4 EA PLASTIC DRUM, FLOURESCENT, FURN _____
1 EA BARRICADE, TYPE III, HIGH INTENSITY, DOUBLE SIDED, LIGHTED, FURN _____
1 EA RII-4 _____
1 EA INTERSECTION MAINTENANCE _____

Drawn: K Parker

KEATING AVE,
INDUSTRIAL BLVD. TO
PORT CITY BLVD. HMA

CITY OF MUSKEGON
OFFICE OF THE CITY ENGINEER