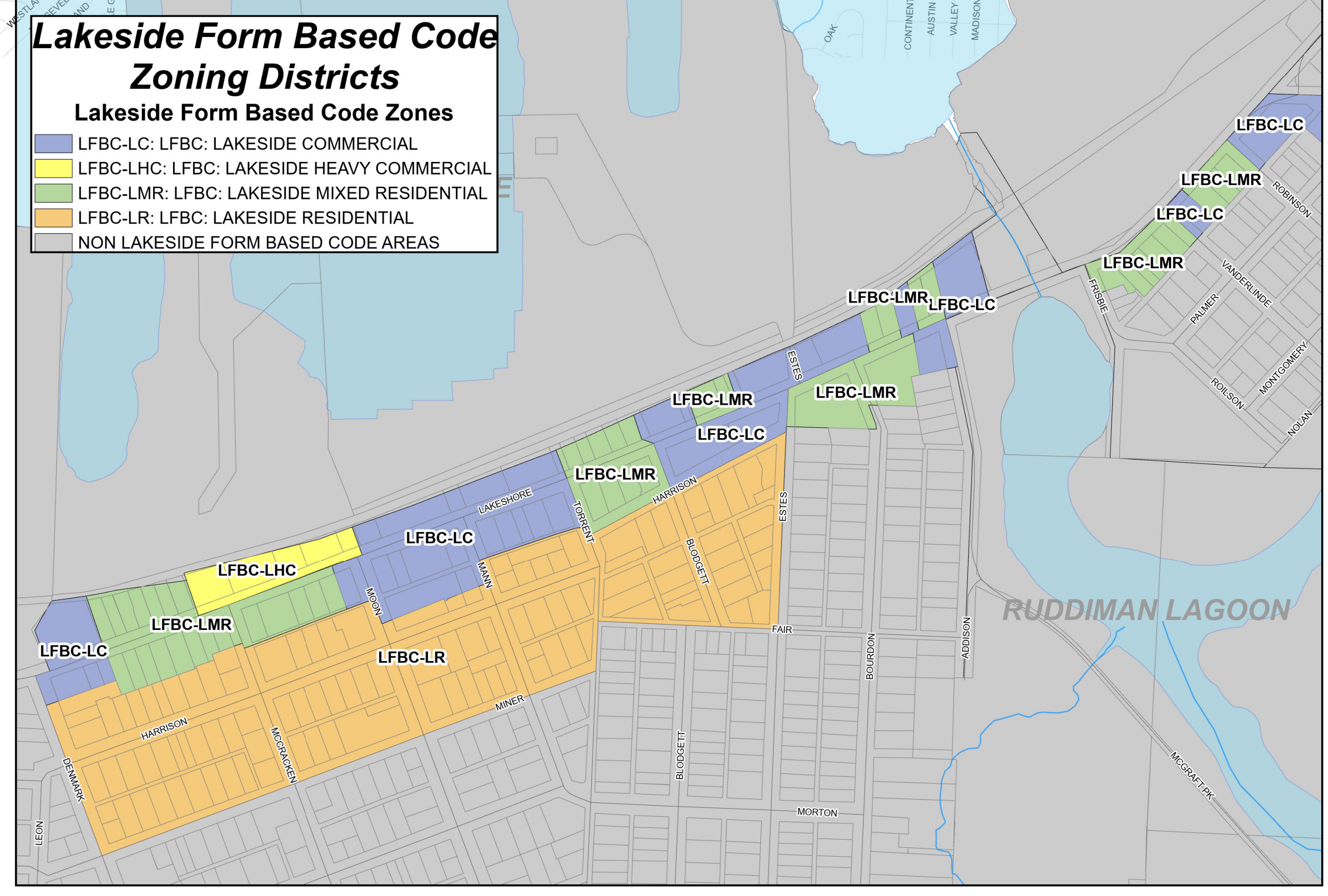
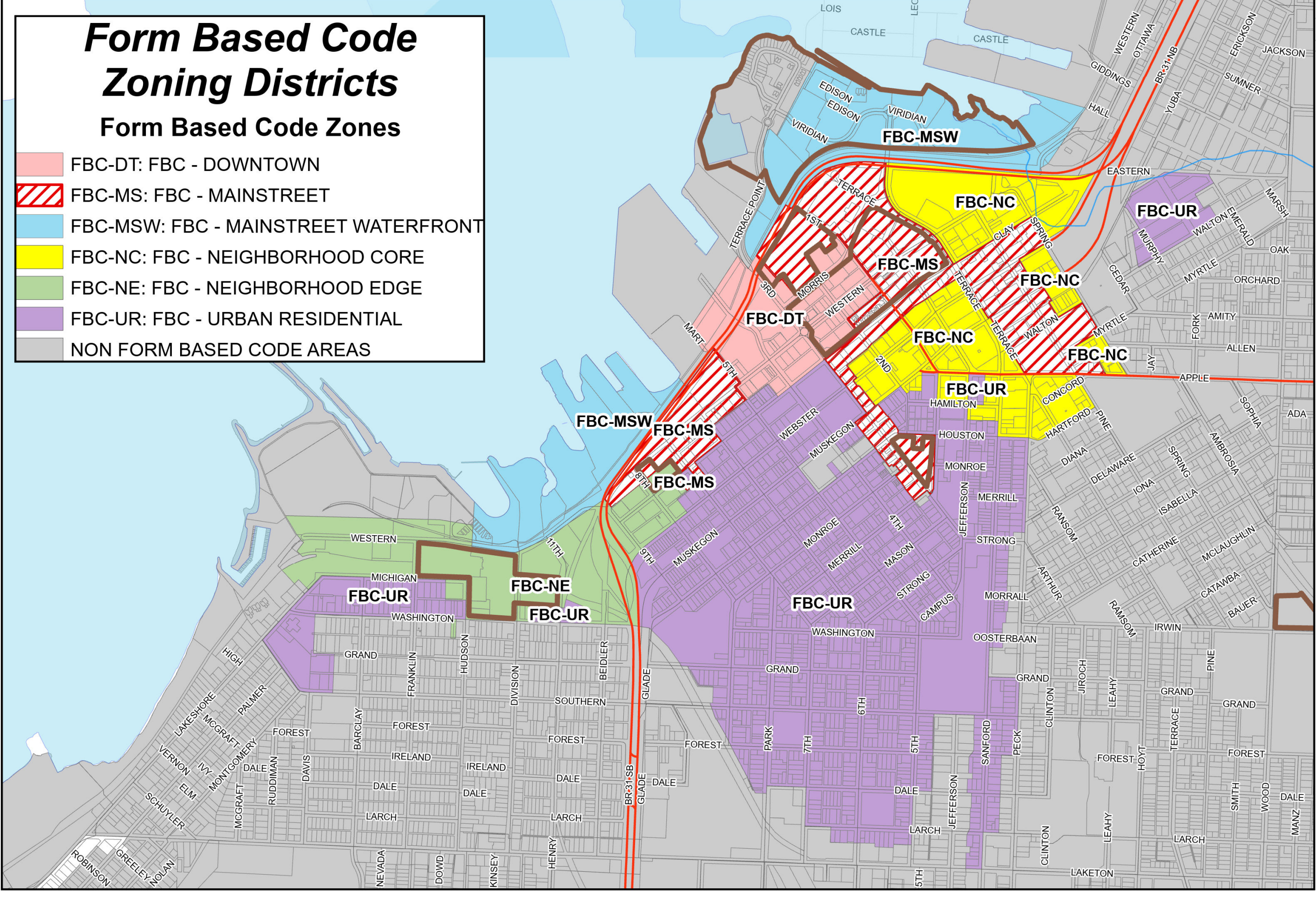
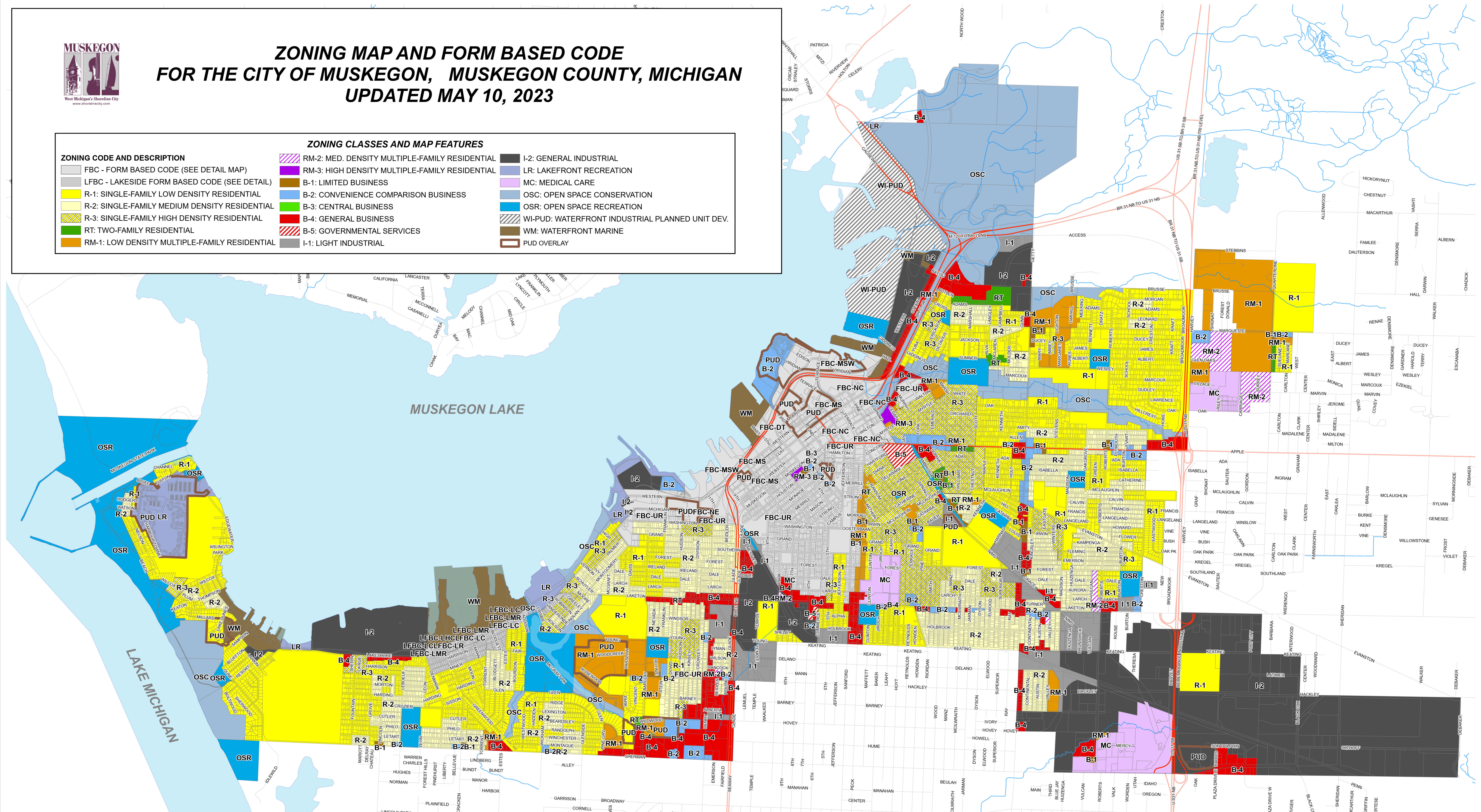




# ZONING MAP AND FORM BASED CODE FOR THE CITY OF MUSKEGON, MUSKEGON COUNTY, MICHIGAN

UPDATED MAY 10, 2023

ZONING CODE AND DESCRIPTION		ZONING CLASSES AND MAP FEATURES	
[Grey Box]	FBC - FORM BASED CODE (SEE DETAIL MAP)	[Purple Box]	RM-2: MED. DENSITY MULTIPLE-FAMILY RESIDENTIAL
[Light Blue Box]	LFBC - LAKESIDE FORM BASED CODE (SEE DETAIL)	[Brown Box]	B-1: LIMITED BUSINESS
[Yellow Box]	R-1: SINGLE-FAMILY LOW DENSITY RESIDENTIAL	[Light Green Box]	B-2: CONVENIENCE COMPARISON BUSINESS
[Light Yellow Box]	R-2: SINGLE-FAMILY MEDIUM DENSITY RESIDENTIAL	[Blue Box]	B-3: CENTRAL BUSINESS
[Yellow-Orange Box]	R-3: SINGLE-FAMILY HIGH DENSITY RESIDENTIAL	[Red Box]	B-4: GENERAL BUSINESS
[Orange Box]	RT: TWO-FAMILY RESIDENTIAL	[Red-White Striped Box]	B-5: GOVERNMENTAL SERVICES
[Dark Orange Box]	RM-1: LOW DENSITY MULTIPLE-FAMILY RESIDENTIAL	[Dark Blue Box]	I-1: LIGHT INDUSTRIAL
		[Black Box]	I-2: GENERAL INDUSTRIAL
		[Light Blue Box]	LR: LAKEFRONT RECREATION
		[Purple Box]	MC: MEDICAL CARE
		[Light Blue Box]	OSC: OPEN SPACE CONSERVATION
		[Blue Box]	OSR: OPEN SPACE RECREATION
		[Blue-White Striped Box]	WI-PUD: WATERFRONT INDUSTRIAL PLANNED UNIT DEV.
		[Brown Box]	WM: WATERFRONT MARINE
		[Brown-White Striped Box]	PUD OVERLAY



**MAP FEATURES**

- [Blue Box] LAKES
- [Blue Line] RIVERS AND STREAMS
- [Grey Box] JURISDICTION
- [Grey Line] ROADS
- [Red Line] HIGHWAYS
- [White Box] PARCELS

**MUSKEGON County GIS**

Mapping by Muskegon County GIS  
 141 E. Apple Avenue, Muskegon, MI 49442  
 P: 231-724-4458 www.muskegoncountygis.org  
 Map Data: Muskegon County GIS  
 Zoning Information: City of Muskegon Planning  
 Projection: State Plane NAD 1983 Michigan  
 South Zone, International Feet  
 Map Version Date: 5/10/2023

Document Path: O:\GIS\Projects\24\_City\_Muskegon\Zoning\Zoning\_Map\Zoning\_Map.aprx