

CITY OF MUSKEGON

920 WEST WESTERN AVE, MUSKEGON, MI

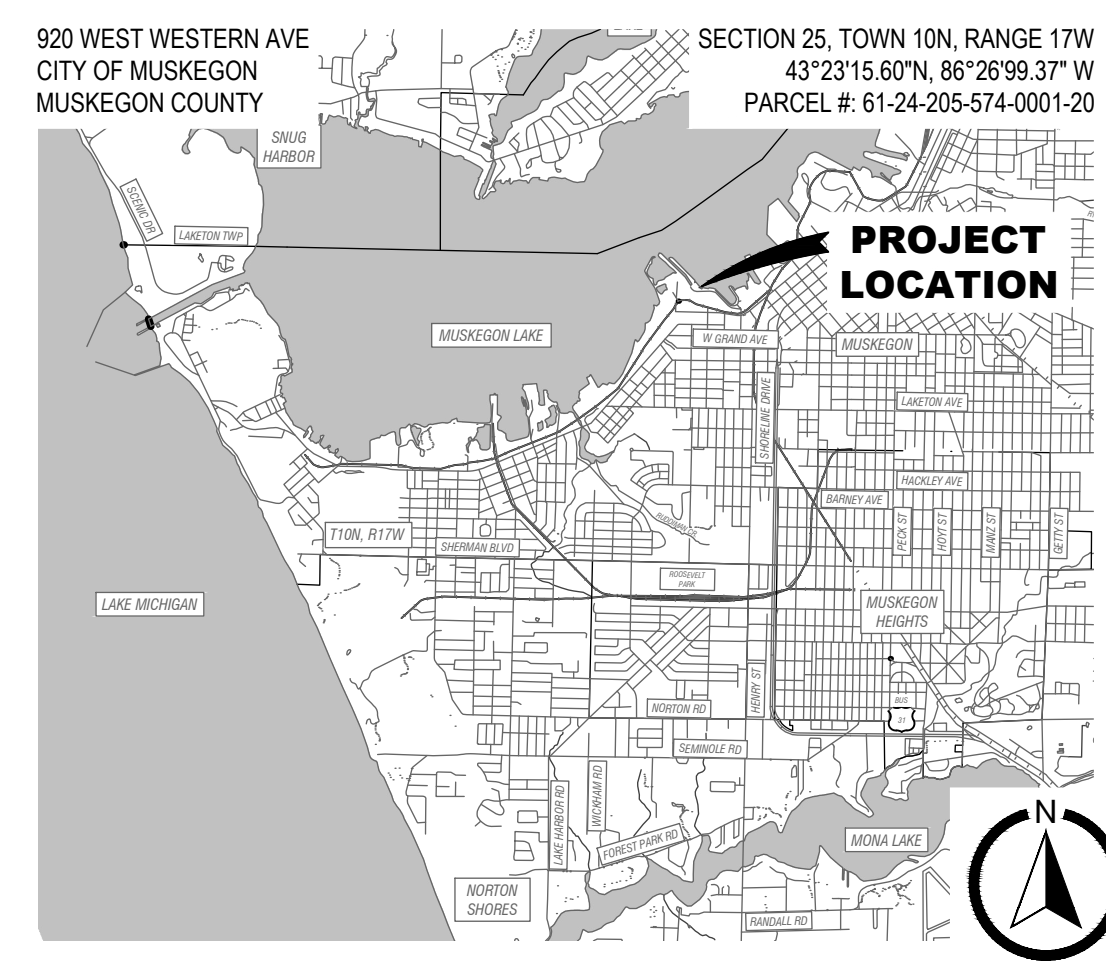


HARTSHORN MARINA IMPROVEMENTS

JANUARY 2026

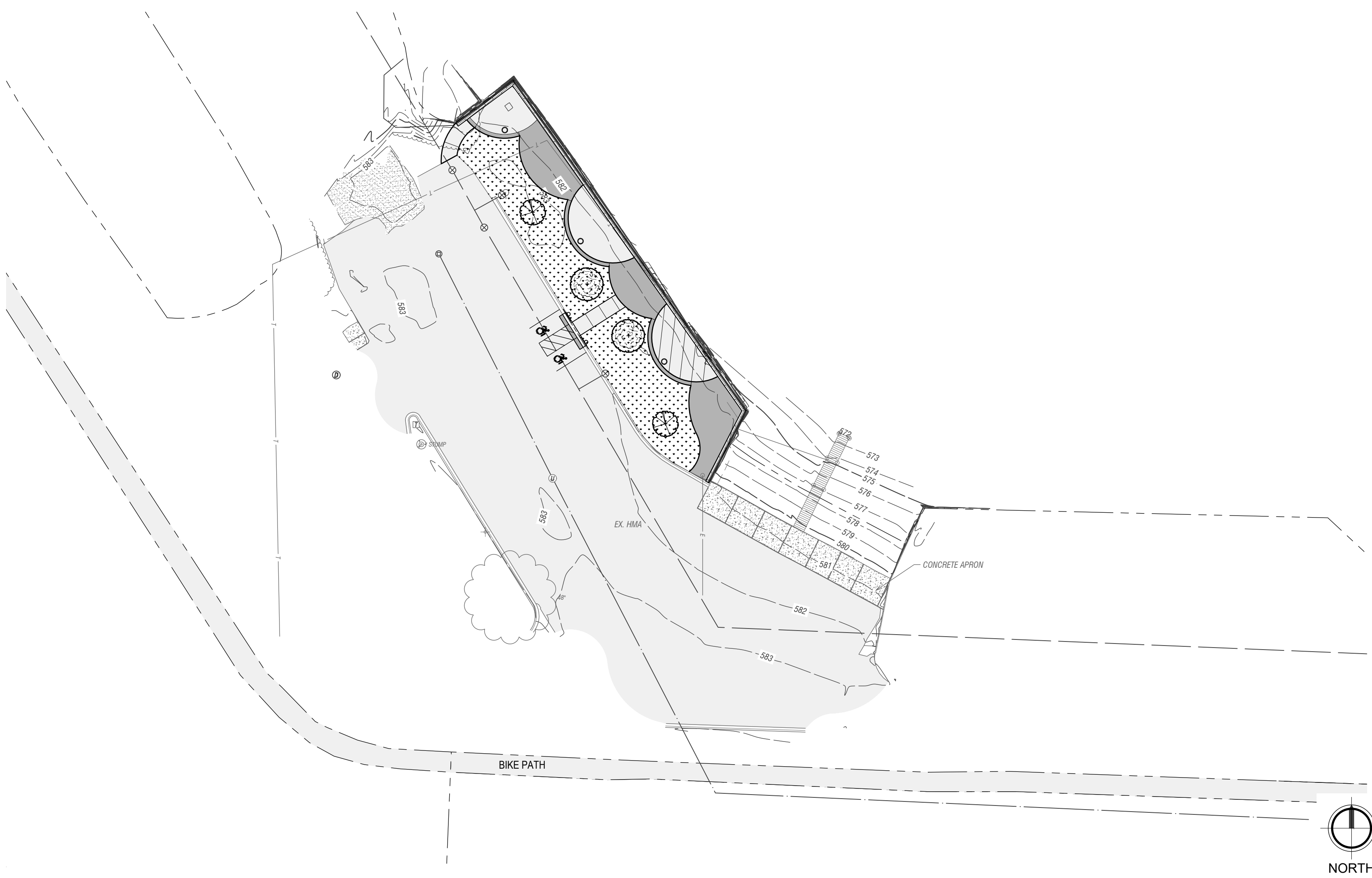


VICINITY MAP



LOCATION MAP

LEGAL DESCRIPTION:
CITY OF MUSKEGON REVISED PLAT OF 1903 PART OF BLKS 574 & 575 LYING NLY & ELY OF FOL DESC LINE COM AT SE COR BLK 574 TH N 88 DEG 43 MIN W 270.42 FT FOR PLACE OF BEG TH N 1 DEG 40 MIN W 100 FT TH N 47 DEG 05 MIN W 888.45 FT TH S 87 DEG 55 MIN W 691.50 FT TH N 37 DEG 00 MIN W 730 FT TH N 48 DEG 00 MIN W TO THREAD OF STREAM IN MUSKEGON LAKE (MUSKEGON COUNTY GIS - PROPERTY INFORMATION VIEWER)



UTILITY COORDINATION:

WATER, SANITARY, AND STORM SEWER: CITY OF MUSKEGON ENGINEERING DEPARTMENT
CONTACT: DAN VANDERHEIDE
PHONE: 231.724.4100

ELECTRIC: CONSUMERS ENERGY
CONTACT: JOEL BROWN
PHONE: 231.332.2682

GAS: DTE
CONTACT: SARAH MCKENZIE
PHONE: 313.378.0346

PHONE: FRONTIER/VERIZON TELEPHONE
CONTACT: CANDY TAPHOUSE
PHONE: 800.778.9140

DEVELOPMENT REFERENCE:

OWNER: CITY OF MUSKEGON - PARKS & RECREATION
1350 E KEATING ST
MUSKEGON, MI 49442
CONTACT: KYLE KARCEWSKI, DIRECTOR

CONSULTANT: FLEIS & VANDENBRINK ENGINEERING
316 MORRIS AVE, #230
MUSKEGON, MI 49440

CIVIL ENGINEER: DON DEVRIES, PE

PROJECT MANAGER: MARLENA O'CONNELL, PLA
PHONE: 616.600.3483



Know what's below.
Call before you dig.



BM #2792 584.71
NAIL W SIDE #14 SIGN POST, 147 SE OF BOAT LAUNCH
(NAVD88 VIA VRS & GPS OBS)

BM #2793 584.32
TOP OF CURB @ PARK ENTRANCE, 170 SW OF BOAT
LAUNCH, 38 SW OF #8 TREE
(NAVD88 VIA VRS & GPS OBS)

EXISTING LEGEND:

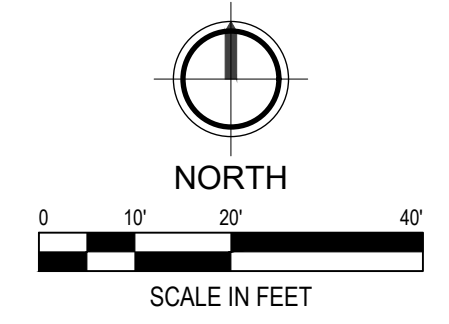
- NOTE: ALL ITEMS LISTED ON THE LEGEND MAY NOT BE PRESENT ON DRAWING
- | | | |
|-------------------------|------------------------|----------------------------|
| SECTION CORNER | UTILITY POLE | CONIFEROUS TREE |
| SURVEY CONTROL POINT | GUY ANCHOR | DECIDUOUS TREE |
| BENCHMARK | ROCK | BUSH |
| FOUND IRON ROD | SOIL BORING | DEAD TREE |
| FOUND CONCRETE MONUMENT | RAILROAD CROSSING | STUMP |
| SET IRON ROD | PEDESTRIAN CROSSING | UNKNOWN MANHOLE |
| SET CONCRETE MONUMENT | PEDESTRIAN PUSH BUTTON | UNKNOWN CLEANOUT |
| MONUMENT BOX | PARKING METER | UNKNOWN HANDHOLE |
| SIGN | STRAIN POLE | UNKNOWN RISER |
| STREET SIGN | TRAFFIC SIGNAL | FILL PORT |
| BUMPER BLOCK | AIR CONDITIONER | ELECTRICAL OUTLET |
| MAIL BOX | FLAG POLE | SPRINKLER VALVE |
| MONITORING WELL | VENT | SPRINKLER HEAD |
| POST | ANTENNA | ELECTRIC: |
| STORM: | WATER: | MANHOLE |
| MANHOLE | MANHOLE | HANDHOLE |
| ROUND CATCH BASIN | VALVE & BOX | METER |
| SQUARE CATCH BASIN | CURB STOP & BOX | LIGHT POLE |
| FLARED END SECTION | FIRE HYDRANT | GROUND LIGHT |
| PIPE INVERT | CLEANOUT | METER |
| CLEANOUT | DOWNSPOUT | FIRE DEPARTMENT CONNECTION |
| DOWNSPOUT | SANITARY: | NATURAL GAS: |
| MANHOLE | MANHOLE | VALVE & BOX |
| CLEANOUT | CLEANOUT | METER |
| VALVE & BOX | VALVE & BOX | MARKER |
| MARKER | MARKER | FIBER OPTIC: |
| CABLE TV: | MANHOLE | MANHOLE |
| MANHOLE | HANDHOLE | HANDHOLE |
| HANDHOLE | RISER | RISER |
| RISER | MARKER | MARKER |
| MARKER | MARKER | MARKER |
-
- | | |
|---------------------|----------------------|
| ASPHALT | BRICK |
| CONCRETE / SIDEWALK | GRAVEL |
| BUILDING | RIP RAP |
| BOUNDARY LINE | SECTION LINE |
| RIGHT OF WAY LINE | PARCEL LINE |
| EASEMENT LINE | PLAT LINE |
| CURB & GUTTER | LANDSCAPE CURB |
| ASPHALT CURB | SANITARY SEWER |
| DITCH | SANITARY LATERAL |
| EDGE OF WATER | FORCEMAIN |
| FENCE | STORM SEWER |
| GUARD RAIL | STORM LATERAL |
| LANDSCAPING | UNDERDRAIN |
| WETLAND | WATERMAIN |
| MAJOR CONTOUR | WATER SERVICE |
| MINOR CONTOUR | OVERHEAD WIRE |
| BOTTOM OF BANK | UNDERGROUND CABLE |
| TOP OF BANK | UNDERGROUND FIBER |
| BUSH LINE | UNDERGROUND GAS |
| BRUSH LINE | UNDERGROUND PHONE |
| TREE LINE | UNDERGROUND ELECTRIC |

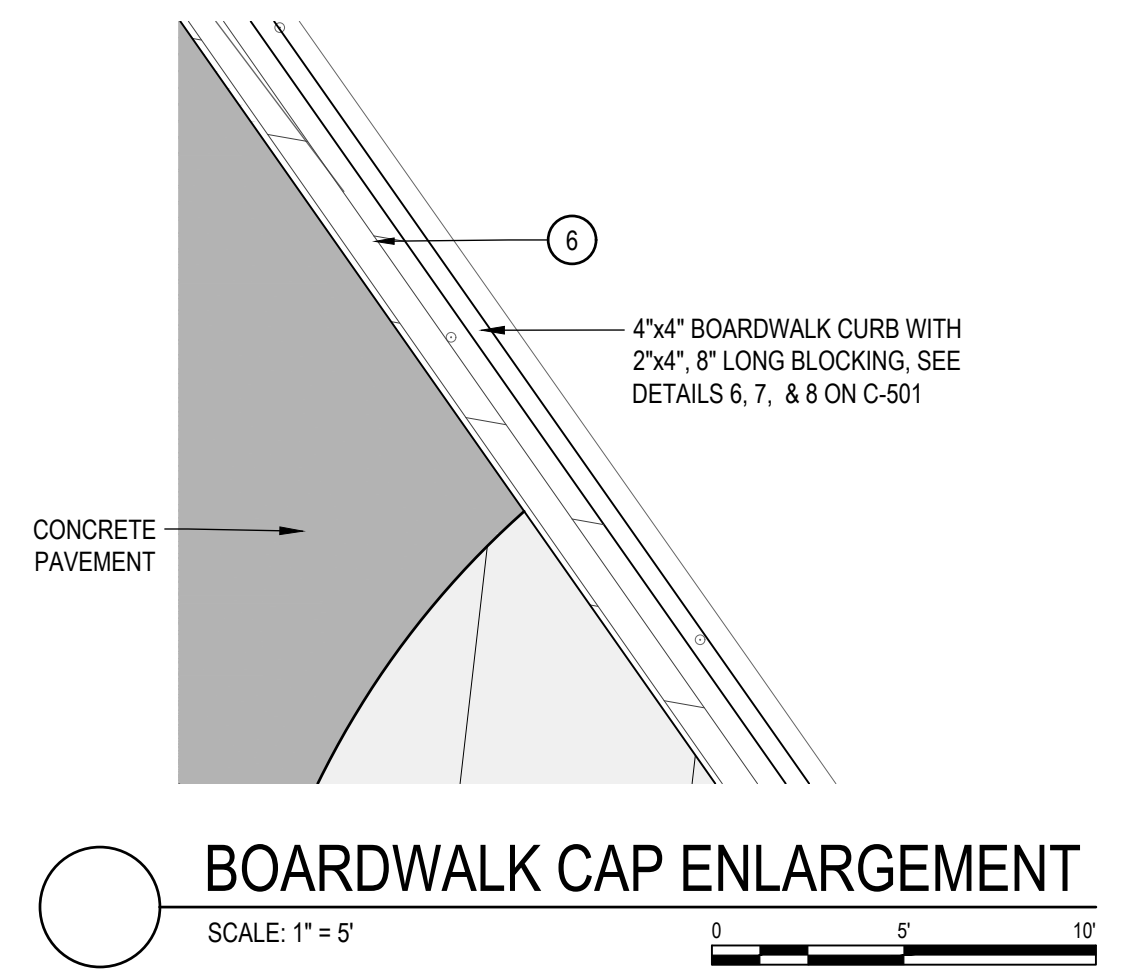
DEMOLITION LEGEND:

- | | |
|-----|--------------------------|
| X | REMOVAL ITEM |
| --- | REMOVE CURB AND GUTTER |
| --- | REMOVE ASPHALT PAVEMENT |
| --- | REMOVE CONCRETE PAVEMENT |
| --- | SILT FENCE |

61-24-205-574-0001-20
920 W WESTERN AVE
CITY OF MUSKEGON

61-24-205-574-0001-15
1010 W WESTERN AVE
HARBOR WEST LLC





PLANT MATERIAL LIST

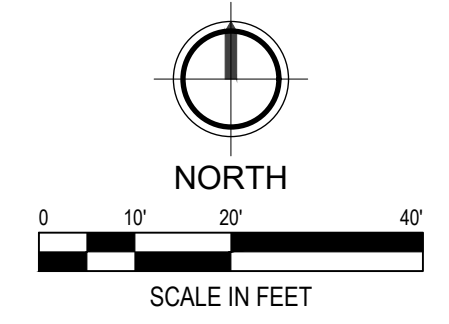
QTY	KEY	COMMON NAME	SCIENTIFIC NAME	SIZE	COMMENTS
DECIDUOUS TREES					
2	AR	OCTOBER GLORY RED MAPLE	<i>Acer rubrum</i> 'October Glory'	2.5"	B&B FULL AND EVENLY BRANCHED HEADS
2	AL	AMERICAN LINDEN	<i>Tilia americana</i>	2.5"	B&B FULL AND EVENLY BRANCHED HEADS
PERENNIALS					
6,600	DG	DUNE GRASS/AMERICAN BEACH GRASS	<i>Ammophila breviflulata</i>		12" O.C. DIAG. SPACING. 2 SPRIGS PER HOLE

- SITE ITEM LEGEND:**
- 4" CONCRETE COLOR A (C-501)
 - 4" CONCRETE COLOR B (C-501)
 - BARRIER FREE SIGN (C-501)
 - 4" PAVEMENT MARKINGS, BLUE
 - BARRIER FREE PARKING SPACE LAYOUT (C-501)
 - BOARDWALK CAP (C-501)
 - MDOT F4 CURB & GUTTER (C-501)
 - HMA HAND PATCH
- SITE FURNISHING LEGEND**
- ROUND CONCRETE BENCH BY: BELSON OUTDOORS MODEL: TFS118 COLOR: ACID WASH - BUFF

QUANTITY TABLE

ITEM	QTY	UNIT
4" CONCRETE COLOR A	2300	SFT
4" CONCRETE COLOR B	2300	SFT
BARRIER FREE SIGN	2	EA
BOARDWALK CAP	600	SFT
MDOT F4 CURB & GUTTER	20	FT
HMA HAND PATCH	40	SFT

- PROPOSED LEGEND:**
- CONCRETE COLOR A
 - CONCRETE COLOR B
 - BOARDWALK
 - DUNE GRASS RESTORATION
 - HMA HAND PATCH
 - CURB & GUTTER
 - DUBBED DOWN CURB



M:\Proj\873001-876000\873460 Muskegon Parks Dept\Cart\Hartshorn\Plan\873460-C-102 SITE.dwg Wednesday, January 21, 2026 at 4:13pm mellenlocornell

M:\Proj\873001-876000\873460 Muskegon Parks Dept\CallHarbor\Plan\873460-C-103 GRAD.dwg Wednesday, January 21, 2025 at 4:18pm malena.cornell



BM #2792 584.71
NAIL W SIDE 4x4 SIGN POST, 147 SE OF BOAT LAUNCH
(NAVD88 VIA VRS & GPS OBSV)

BM #2793 584.32
TOP OF CURB @ PARK ENTRANCE, 170 SW OF BOAT
LAUNCH, 28 SW OF 48' TREE
(NAVD88 VIA VRS & GPS OBSV)

SOIL EROSION CONTROL LEGEND:

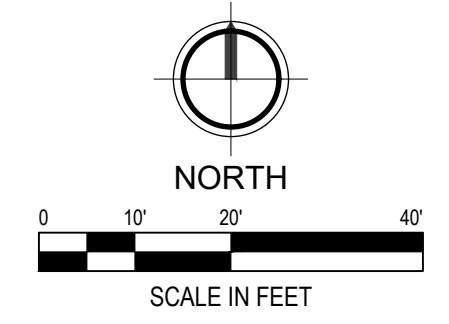
- 3. PERMANENT / TEMPORARY SEEDING (DUNE GRASS RESTORATION)
 - 26. SILT FENCE
- THE ABOVE EROSION CONTROL MEASURES SHALL BE IN ACCORDANCE WITH THE MDOOT SOIL EROSION AND SEDIMENTATION CONTROL MANUAL, MARCH 2021.
REFER TO SECTION 01 57 13 OF THE PROJECT MANUAL.

PROPOSED GRADING LEGEND:

- FLOW ARROW
- - - GRADE BREAK
- SILT FENCE
- 582 PROPOSED MINOR CONTOUR
- 585 PROPOSED MAJOR CONTOUR
- 584.00 FG PROPOSED SPOT GRADE
- CON CONCRETE GRADE
- MX MATCH EXISTING ELEVATION
- SW SIDEWALK GRADE

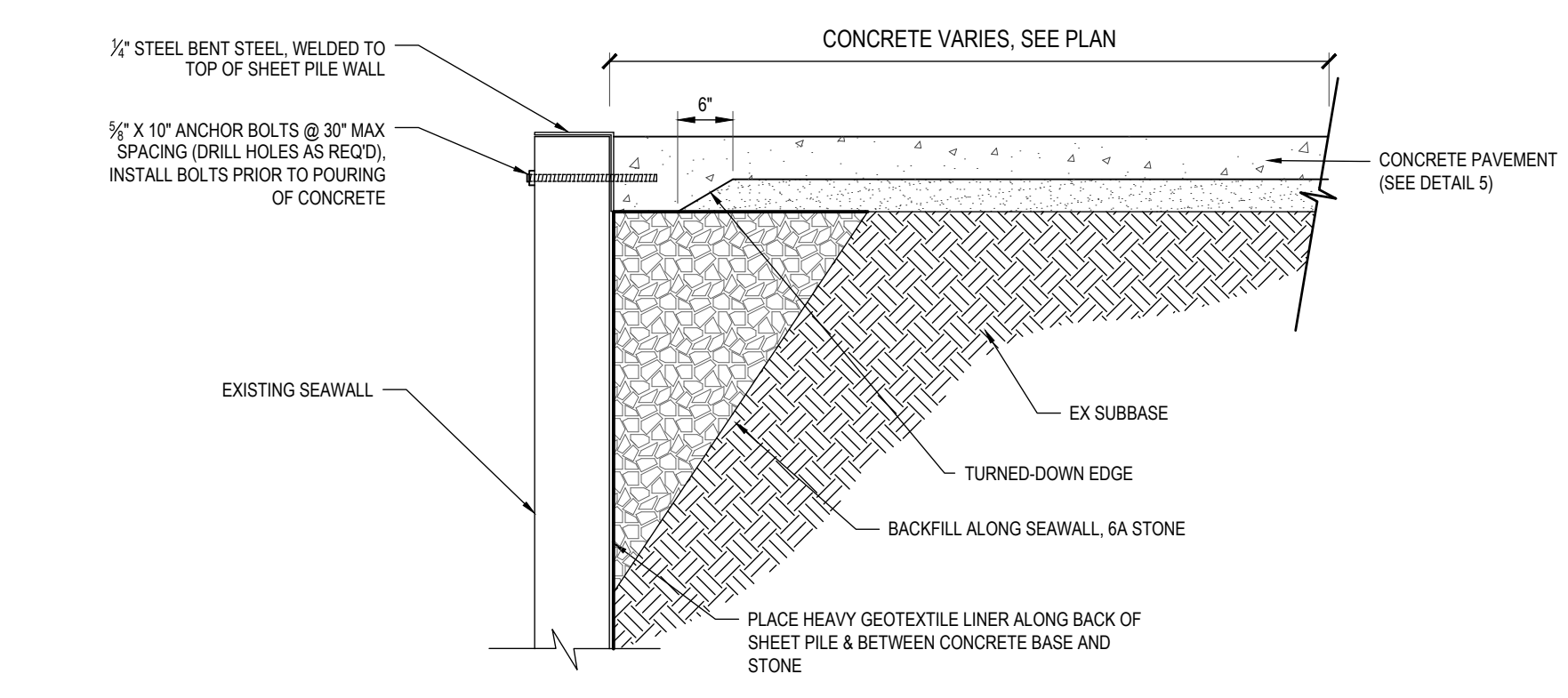
61-24-205-574-0001-20
920 W WESTERN AVE
CITY OF MUSKEGON

61-24-205-574-0001-15
1010 W WESTERN AVE
HARBOR WEST LLC

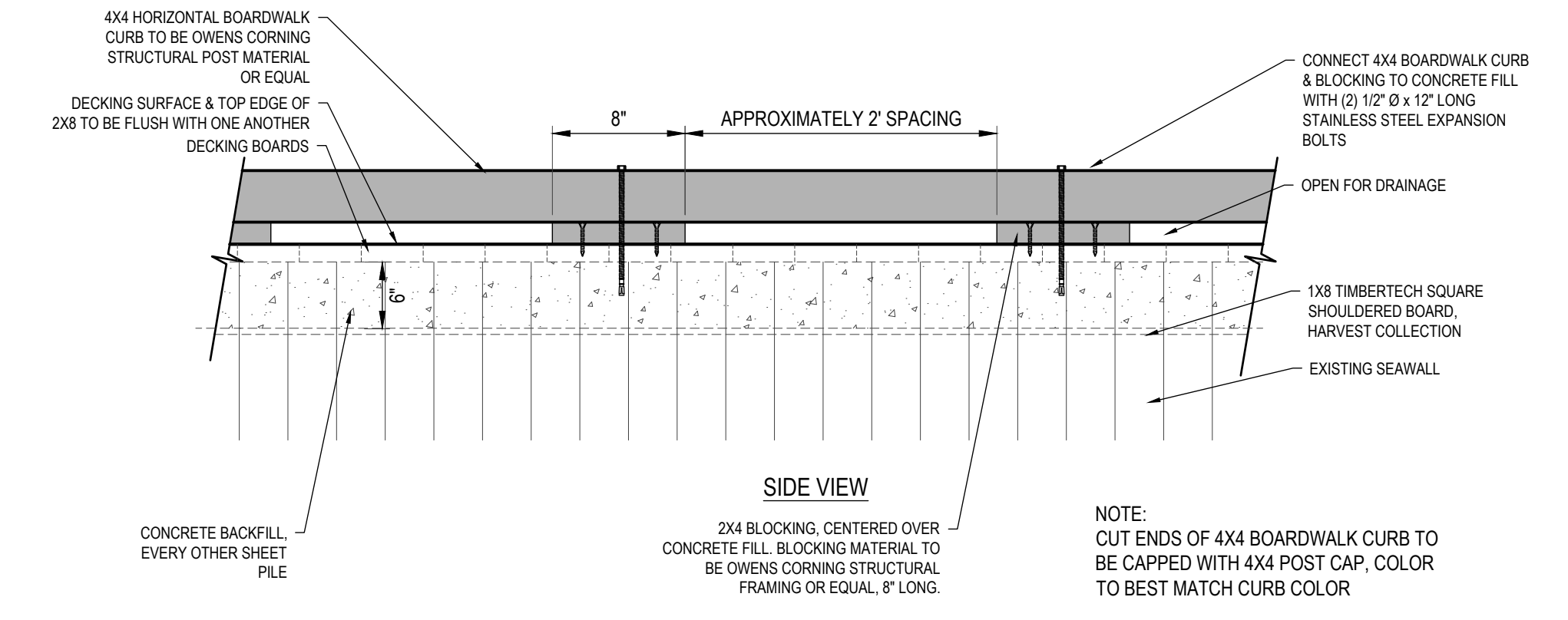


DESIGN TEAM	PROJ MGR: MJO	DRAWN BY: RWS	CHECKED BY:
-------------	---------------	---------------	-------------

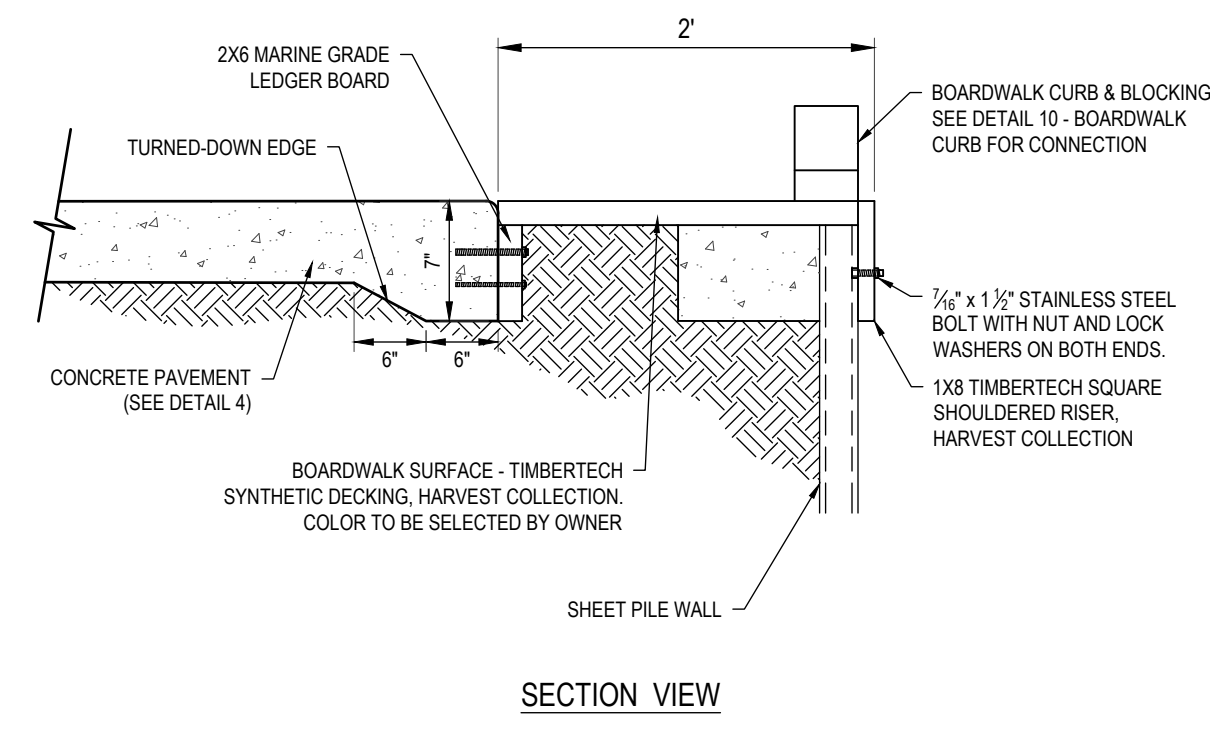
NOT FOR CONSTRUCTION



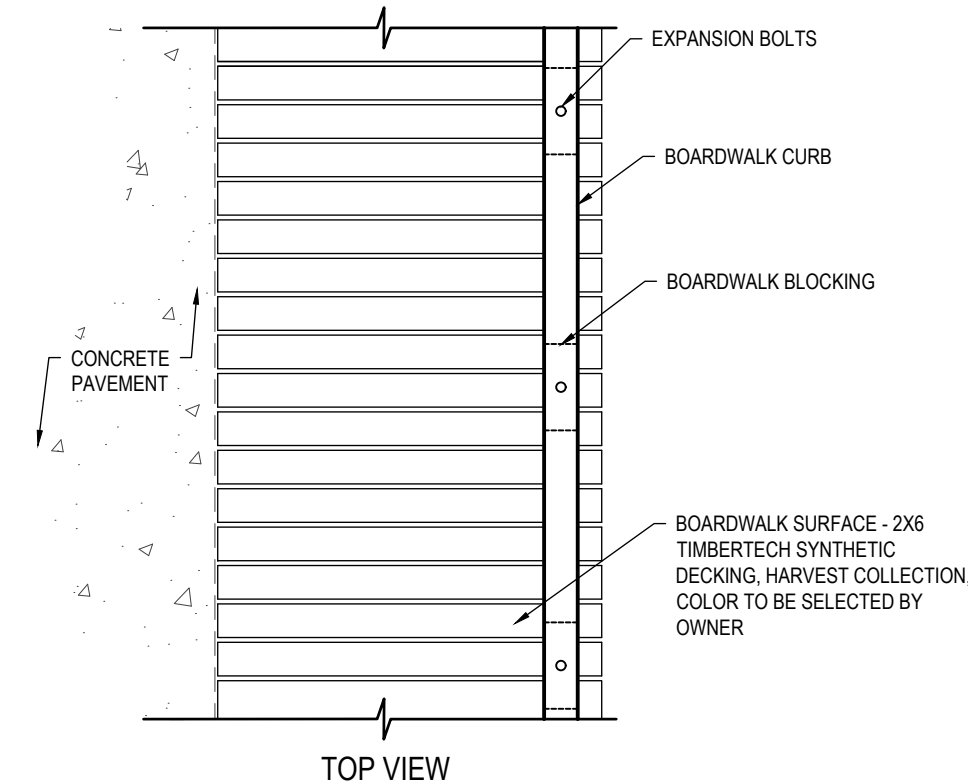
12 STEEL CAP - ALTERNATE 1
NOT TO SCALE



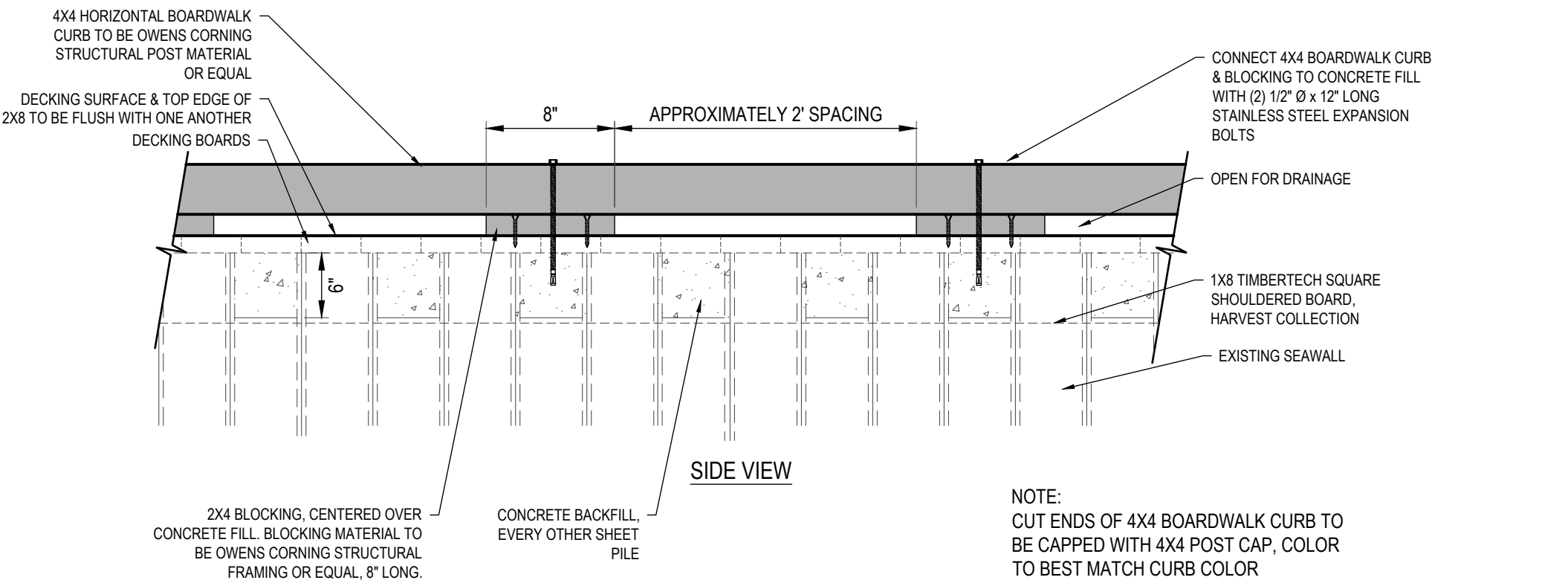
11 BOARDWALK CURB CONNECTION, TYPE B
NOT TO SCALE



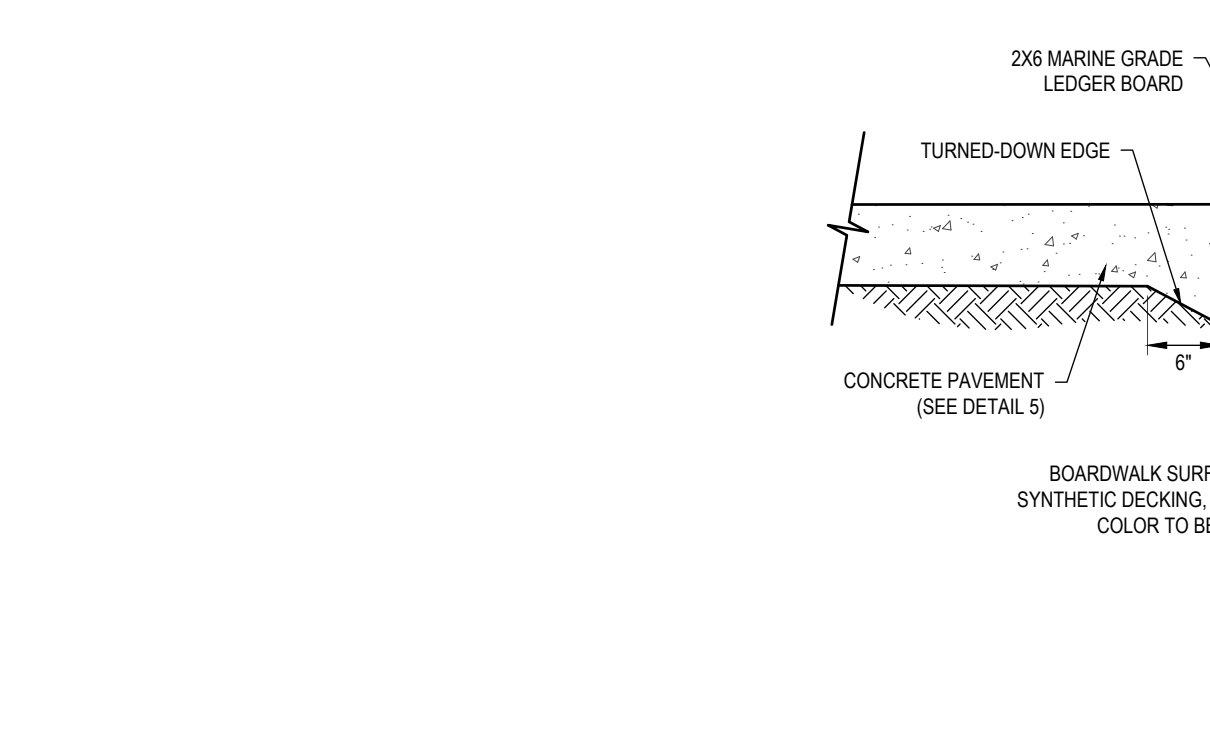
10 BOARDWALK CAP - SHEET PILE & SIDE WALK CONNECTION, TYPE B
NOT TO SCALE



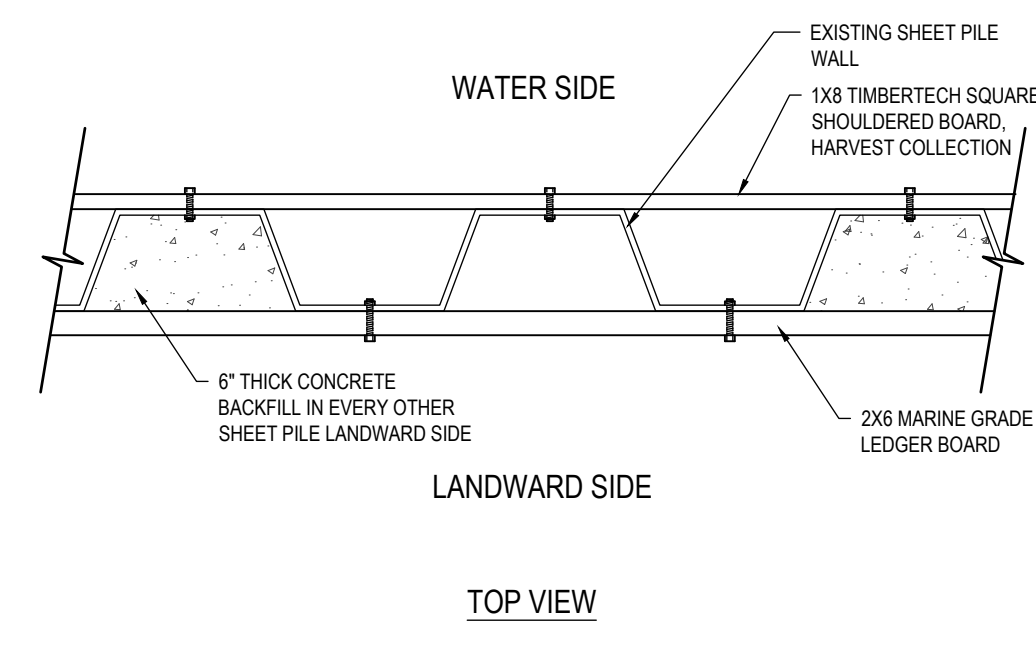
9 BOARDWALK CURB CONNECTION, TYPE A
NOT TO SCALE



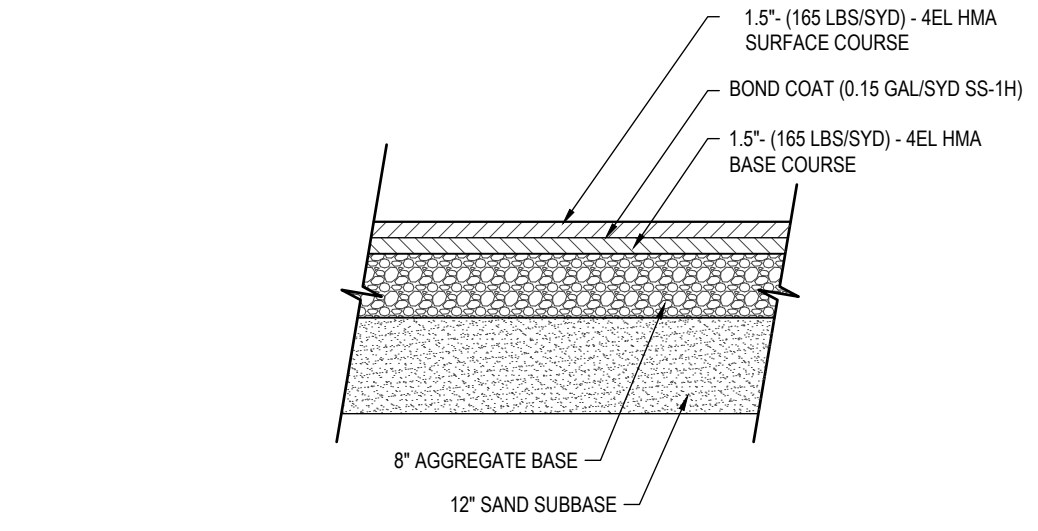
11 BOARDWALK CURB CONNECTION, TYPE B
NOT TO SCALE



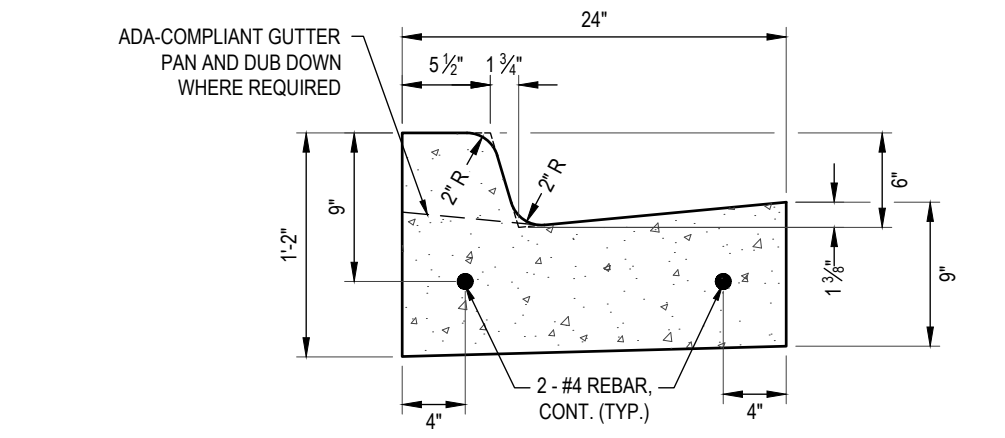
10 BOARDWALK CAP - SHEET PILE & SIDE WALK CONNECTION, TYPE B
NOT TO SCALE



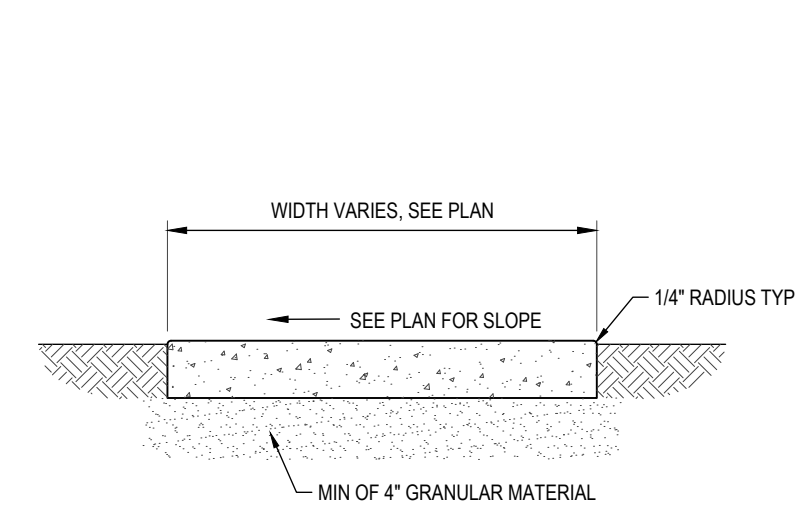
9 BOARDWALK CURB CONNECTION, TYPE A
NOT TO SCALE



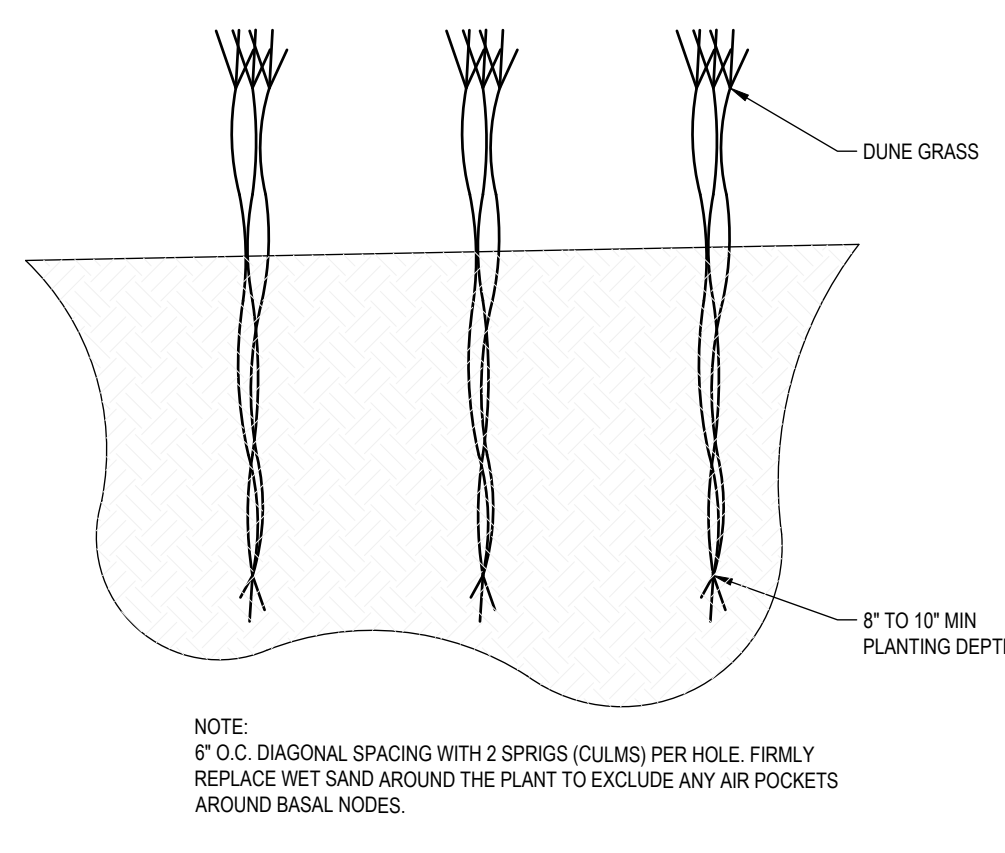
7 HMA HAND PATCH
NOT TO SCALE



6 MDOT F4 CURB AND GUTTER
NOT TO SCALE



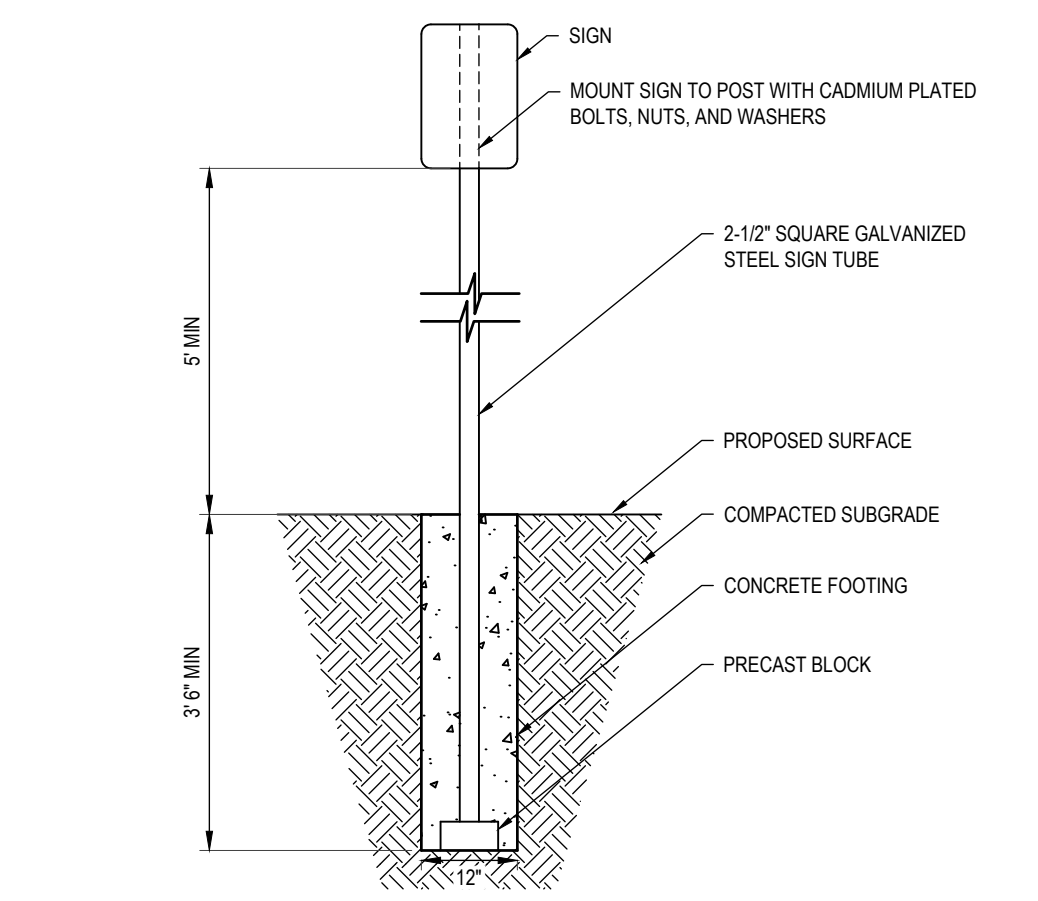
5 4" CONCRETE
NOT TO SCALE



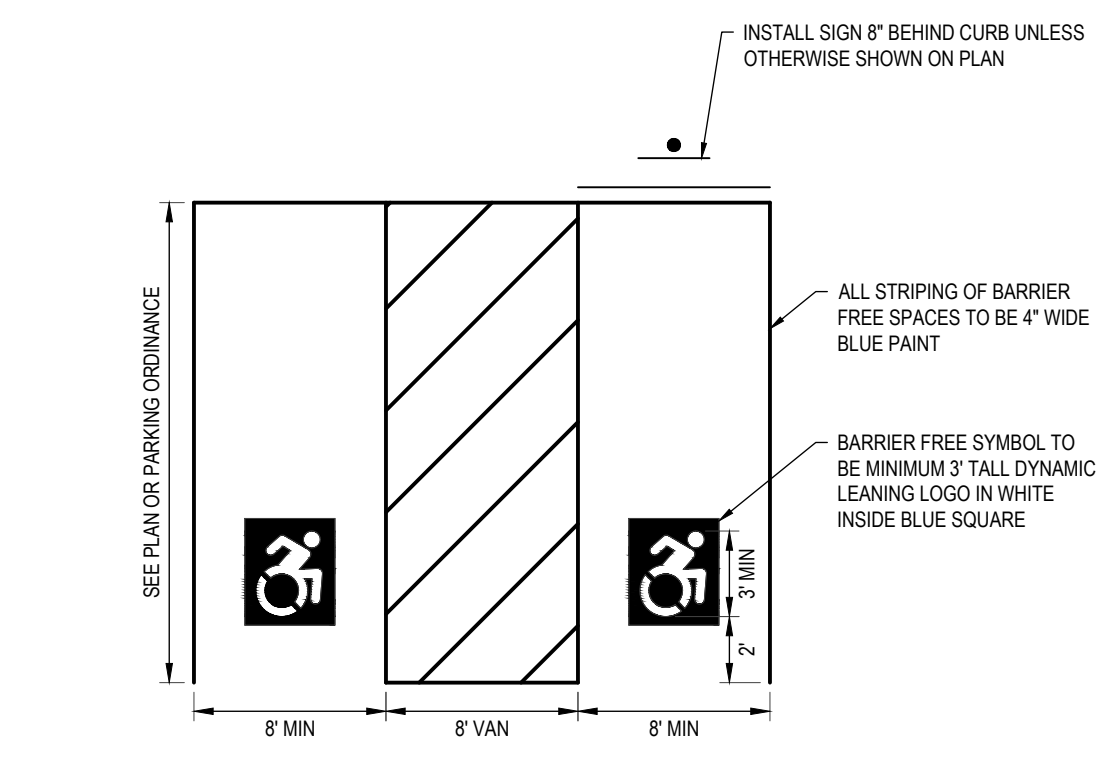
4 DUNE GRASS PLANTING
NOT TO SCALE



3 BARRIER FREE SIGNS
NOT TO SCALE



2 SIGN MOUNTING - STEEL
NOT TO SCALE



1 BARRIER FREE PARKING SPACE LAYOUT
NOT TO SCALE

M:\Proj\873001-876000\87460 Muskegon Parks Dept\CallHartshorn\87460-501 DETL.dwg Wednesday, January 22, 2025 4:41:19pm matlina.connell