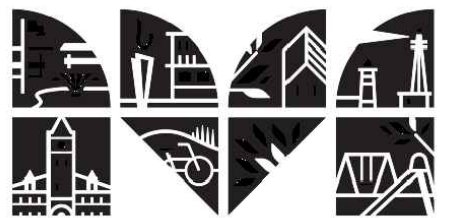


CITY OF MUSKEGON

95 N CAUSEWAY ST, MUSKEGON, MI



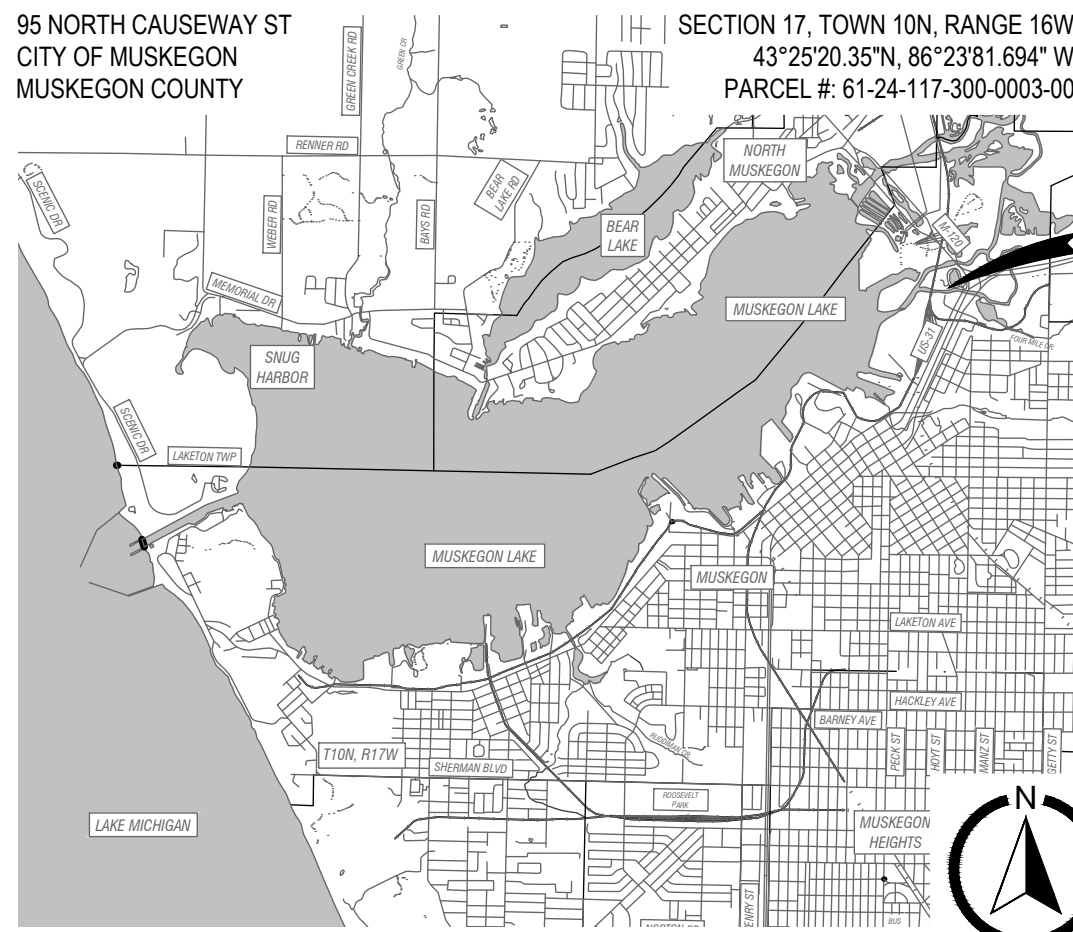
RICHARDS PARK IMPROVEMENTS

JANUARY 2026

NOT FOR CONSTRUCTION



VICINITY MAP

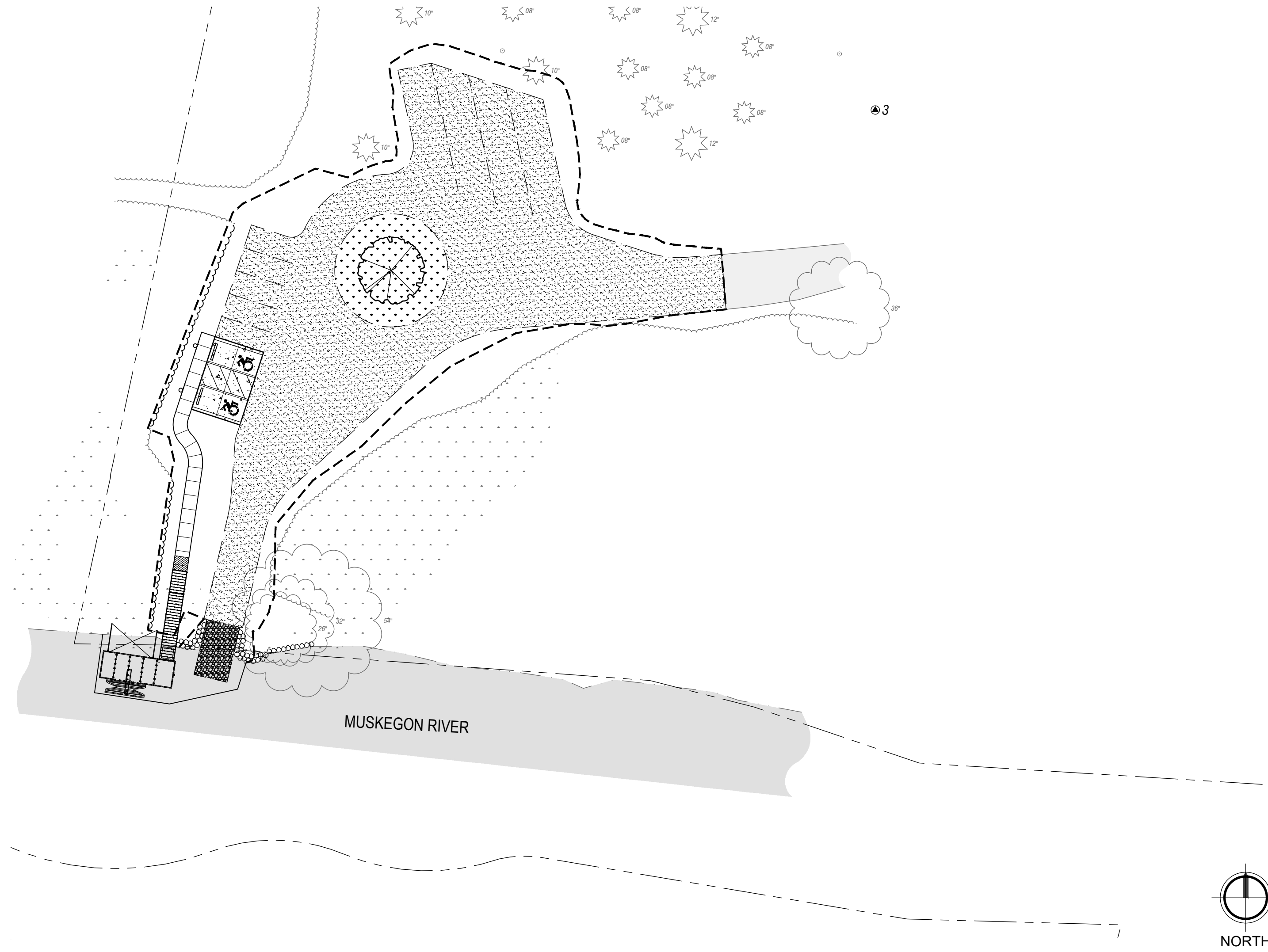


PROJECT LOCATION

LOCATION MAP

LEGAL DESCRIPTION:

CITY OF MUSKEGON PART OF SW 1/4 SEC 17 T10N R16W COM @ INTER OF SOUTH BRANCH OF MUSKEGON RIVER & ELY RW LINE OF C & O RR TH NLY ALONG SAID RW TO CL OF MIDDLE CHANNEL OF MUSKEGON RIVER TH NELY ALONG CL SAID RIVER CHANNEL TO WLY LINE OF OTTAWA ST TH SLY & WLY ALONG WLY LINE OF OTTAWA ST TO SOUTH BRANCH OF MUSKEGON RIVER TH W ALONG RIVER BANK TO BEGINNING INCL PART OF BLK 544, LOT 1 BLK 545 & ABANDONED COUNTY RD OF CITY OF MUSKEGON REVISED PLAT OF 1903 (MUSKEGON COUNTY GIS - PROPERTY INFORMATION VIEWER)



UTILITY COORDINATION:

WATER, SANITARY, AND STORM SEWER: CITY OF MUSKEGON ENGINEERING DEPARTMENT
CONTACT: DAN VANDERHEIDE
PHONE: 231.724.4100

ELECTRIC: CONSUMERS ENERGY
CONTACT: JOEL BROWN
PHONE: 231.332.2682

DEVELOPMENT REFERENCE:

OWNER: CITY OF MUSKEGON - PARKS & RECREATION
1350 E KEATING ST
MUSKEGON, MI 49442
CONTACT: KYLE KARCOZEWSKI, DIRECTOR

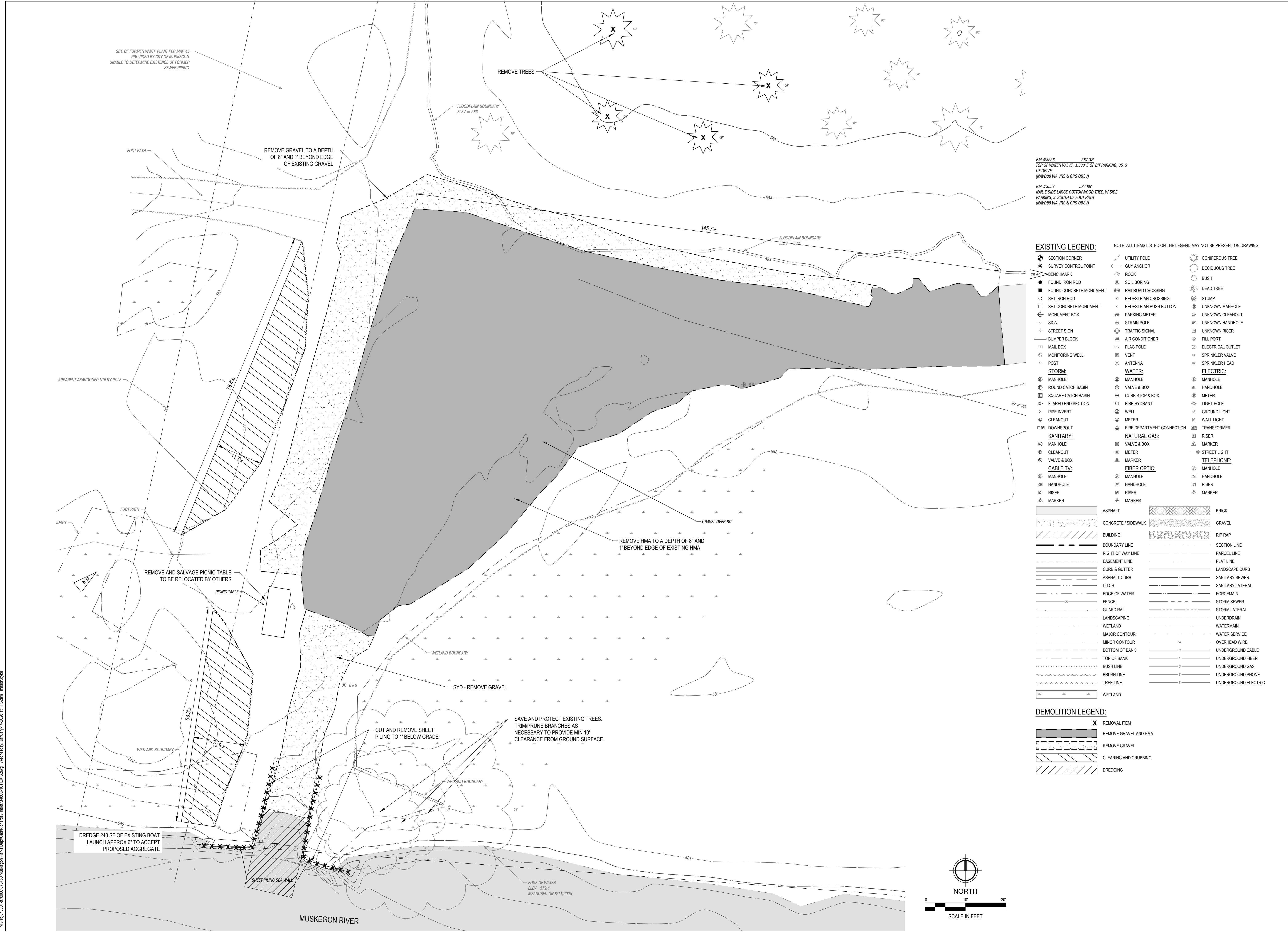
CONSULTANT: FLEIS & VANDENBRINK ENGINEERING
316 MORRIS AVE, #230
MUSKEGON, MI 49440

CIVIL ENGINEER: DON DEVRIES, PE

PROJECT MANAGER: KAYLA PALMER, LEED GREEN ASSOCIATE
PHONE: 616.688.1584



Know what's below.
Call before you dig.



M:\Proj\873001-873000\873460_Muskegon Parks Dept\RichardsPark\873460C-101_EXIST.dwg Wednesday, January 14, 2018 at 11:32am mason.dwg



BM #3556 587.32
TOP OF WATER VALVE, ±330' E OF BIT PARKING, 35' S
OF DRIVE
(NAVD88 VIA VRS & GPS OBSV)

BM #3557 584.85
NAIL E SIDE LARGE COTTONWOOD TREE, W SIDE
PARKING, 9' SOUTH OF FOOT PATH
(NAVD88 VIA VRS & GPS OBSV)

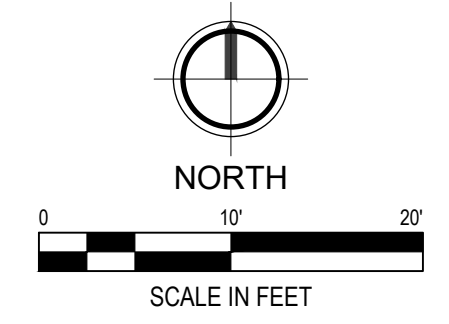
SOIL EROSION CONTROL LEGEND:

- 1. TURBIDITY CURTAIN
- 3. PERMANENT / TEMPORARY SEEDING
- 7. RIPRAP (12" - 18" DIA)
- 26. SILT FENCE

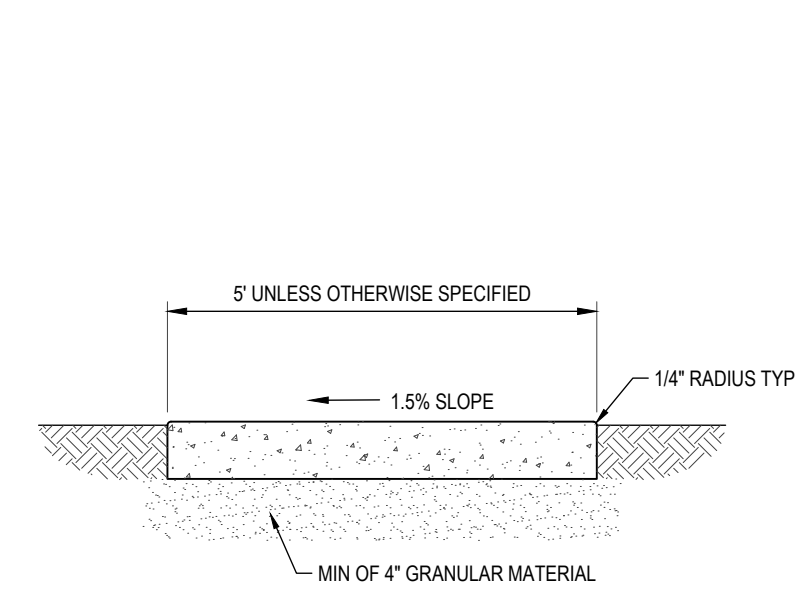
THE ABOVE EROSION CONTROL MEASURES SHALL BE IN ACCORDANCE WITH THE MDOOT SOIL EROSION AND SEDIMENTATION CONTROL MANUAL, MARCH 2021.
REFER TO SECTION 01 57 13 OF THE PROJECT MANUAL.

PROPOSED GRADING LEGEND:

- BM #1 BENCHMARK
- FLOW ARROW
- GRADING LIMITS
- SILT FENCE
- 584 PROPOSED MINOR CONTOUR
- 585 PROPOSED MAJOR CONTOUR
- 584.00 FG PROPOSED SPOT GRADE
- BIT BITUMINOUS GRADE
- CON CONCRETE GRADE
- EP EDGE OF PAVEMENT GRAD
- FL FLOWLINE GRADE
- MX MATCH EXISTING ELEVATION
- RIM STRUCTURE RIM ELEVATION
- SW SIDEWALK GRADE

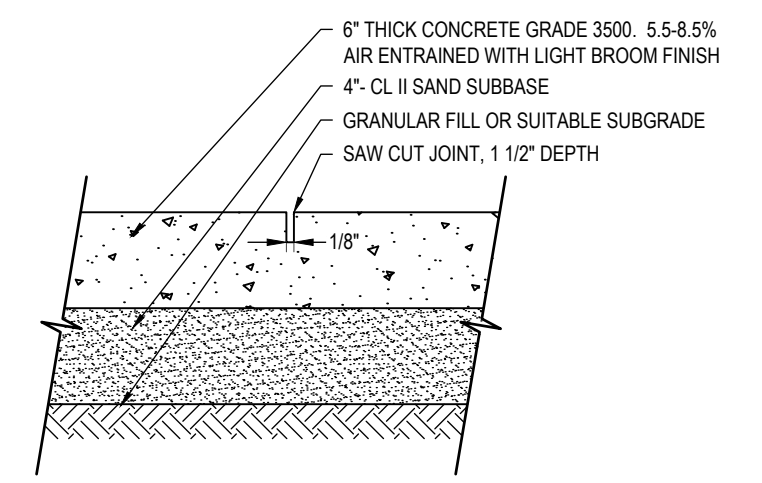


M:\Proj\873460\873460 Richards Park\Richards Park\873460_C-103 GRAD.dwg Wednesday, January 14, 2026 at 11:32am mason.dwg



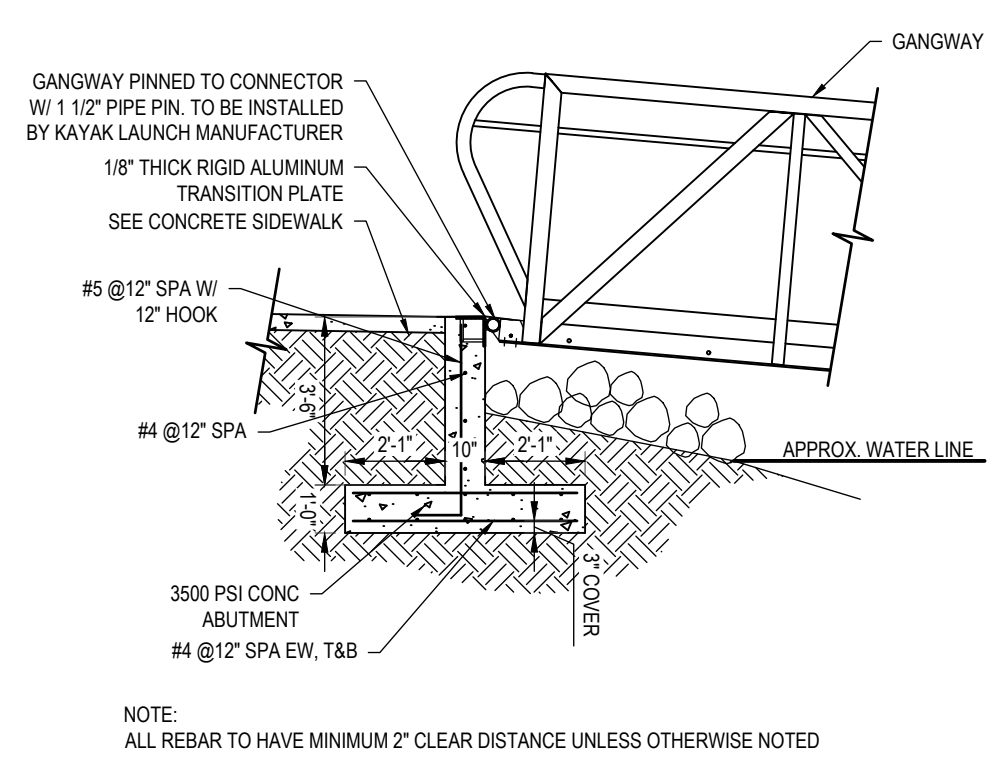
- NOTES:
- 1/2" EXPANSION JOINTS SHALL BE MAXIMUM OF 50' ON CENTER
 - 1/2" EXPANSION JOINT MATERIAL SHALL BE PLACED BETWEEN SIDEWALK AND RIGID STRUCTURES.
 - INsofar AS POSSIBLE, SIDEWALK SHALL BE DIVIDED INTO SQUARE UNIT AREAS BY MEANS OF CONTROL JOINTS NOT MORE THAN 36 SF OR LESS THAN 16 SF.

1 CONCRETE SIDEWALK
NOT TO SCALE



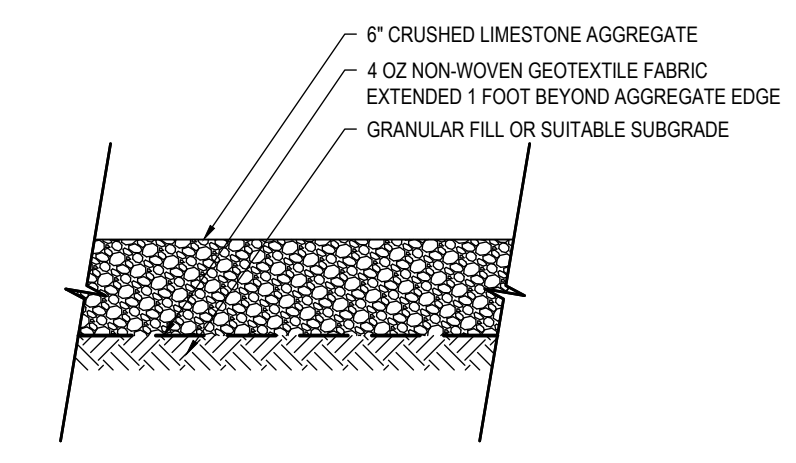
- NOTE:
1. PROVIDE 1/2" EXPANSION JOINT WHERE PAVEMENT MEETS SIDEWALK.
 2. PROVIDE CONTROL JOINTS AT 9' O.C.
 3. REVIEW CONTROL JOINT SPACING WITH ENGINEER PRIOR TO COMMENCEMENT OF SAW CUTTING.

2 6" NONREINFORCED CONCRETE PAVEMENT
NOT TO SCALE



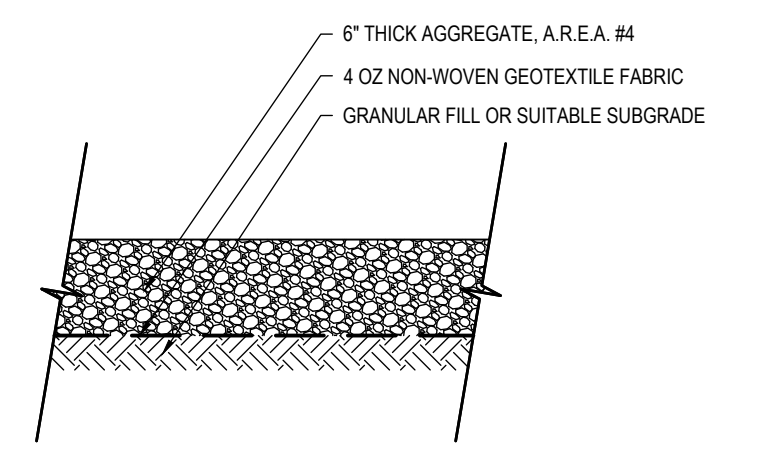
- NOTE:
ALL REBAR TO HAVE MINIMUM 2" CLEAR DISTANCE UNLESS OTHERWISE NOTED

3 GANGWAY CONNECTION & ABUTMENT
SCALE: 1/4" = 1'-0"



- NOTE:
1. AGGREGATE TO BE COMPACTED TO 95% MIN.
 2. PLACE AGGREGATE IN 3" LIFTS.
 3. ALL AREAS BENEATH AGGREGATE SHALL BE PRE-TREATED WITH IMAZAPYR OR APPROVED EQUAL.

4 AGGREGATE DRIVE & PARKING
NOT TO SCALE



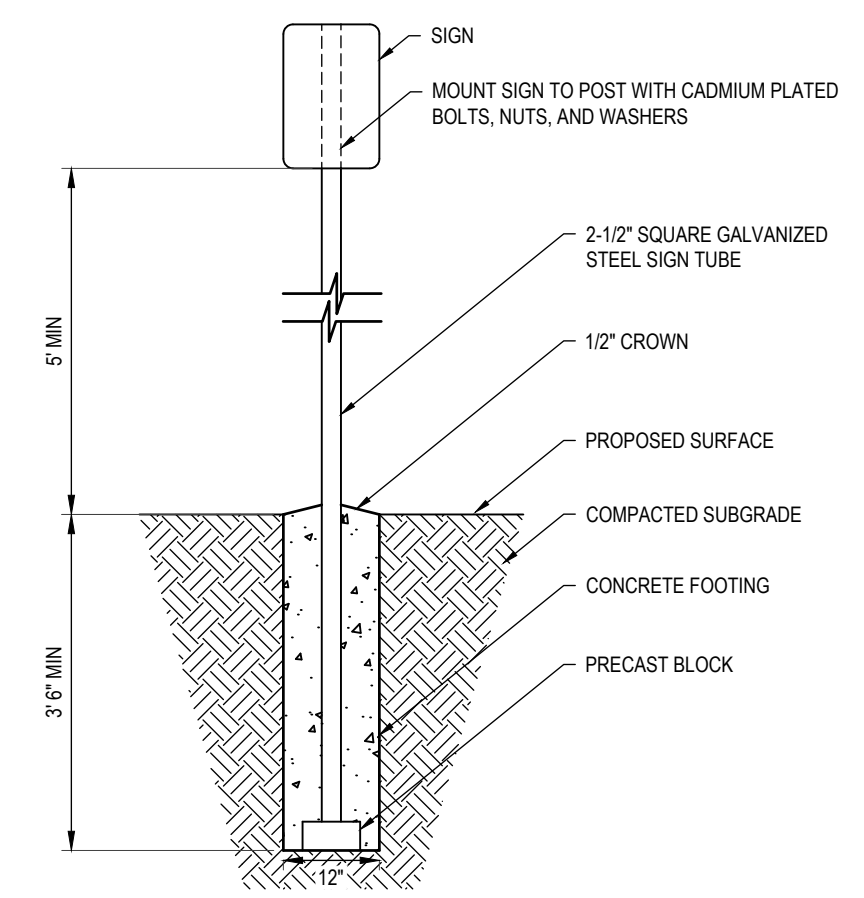
- NOTE:
1. AGGREGATE TO BE COMPACTED TO 95% MIN.
 2. PLACE AGGREGATE IN 3" LIFTS

5 BOAT LAUNCH AGGREGATE
NOT TO SCALE

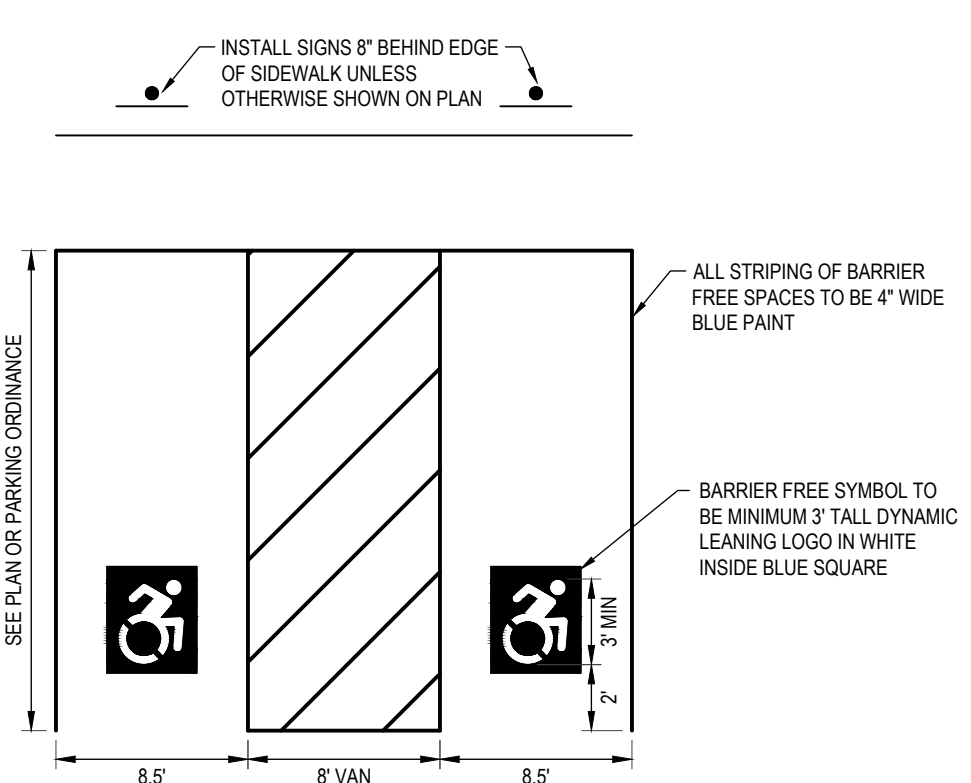


- NOTE:
1. SIGNS SHALL CONFORM TO THE MANUAL OF UNIFORM TRAFFIC CONTROL DEVICES
 2. GRAPHIC SHALL BE DYNAMIC LEANING LOGO WITHIN A BLUE BACKGROUND

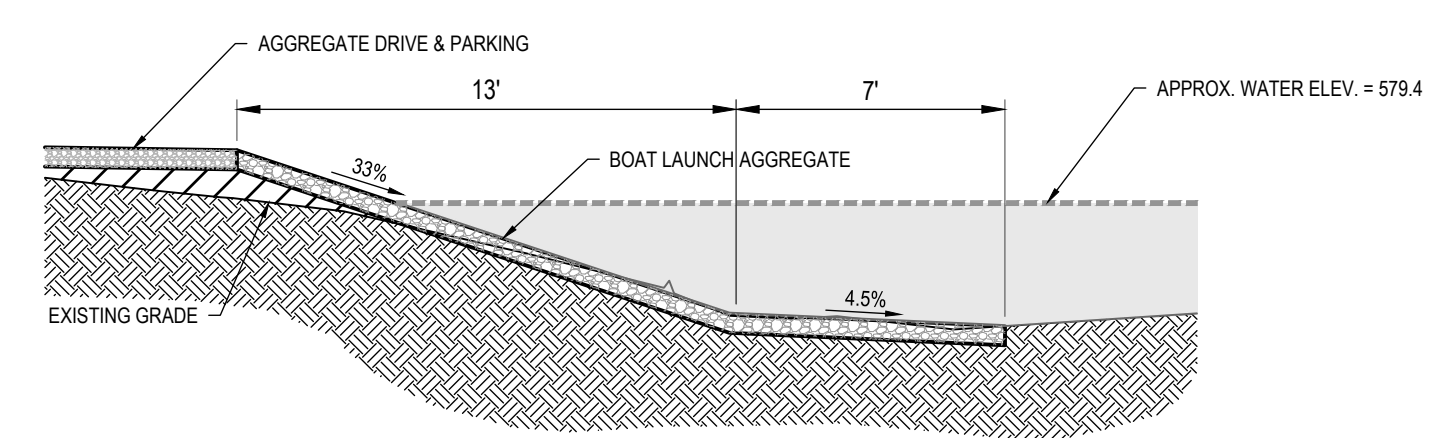
6 BARRIER FREE SIGN
NOT TO SCALE



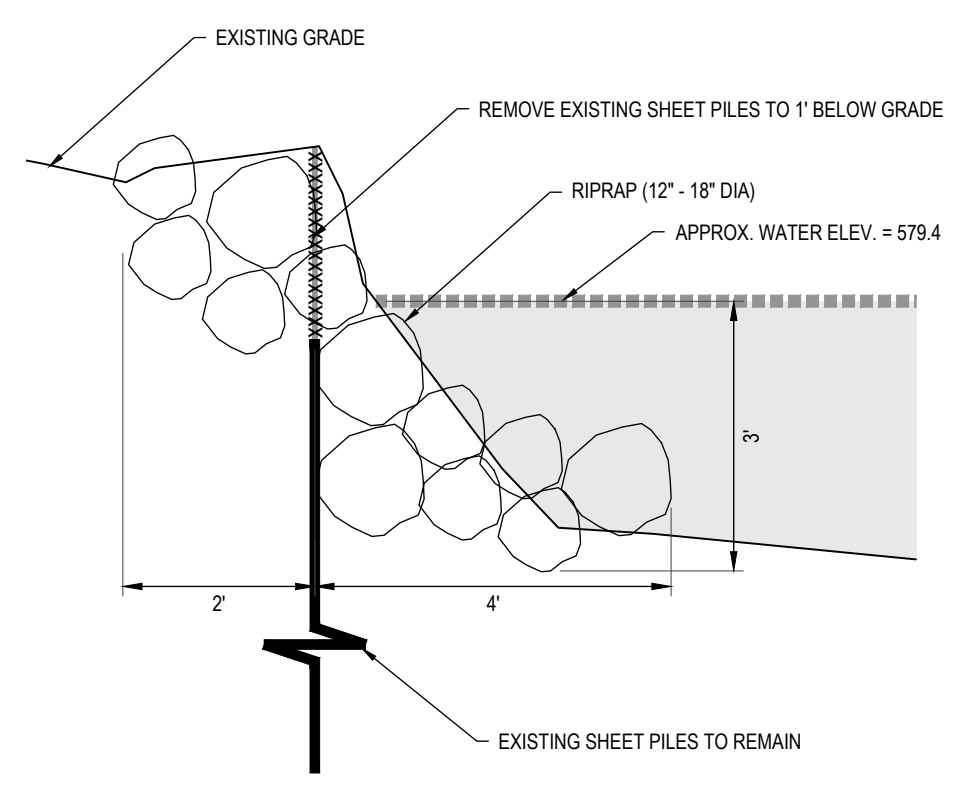
7 SIGN MOUNTING - STEEL
NOT TO SCALE



8 BARRIER FREE PARKING SPACE LAYOUT
NOT TO SCALE



9 BOAT LAUNCH SECTION
SCALE: 1" = 5'



10 RIP RAP SECTION (TYP)
SCALE: 1/2" = 1'-0"