

Parkway Square® Pedestrian Vertical LED – PKWM

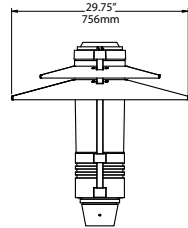
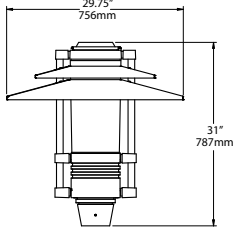
TYPE

FEATURES

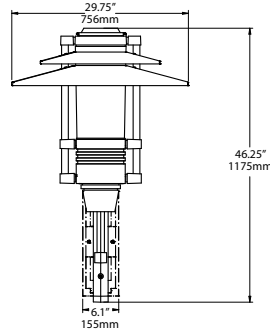
- Reliable, uniform, glare free illumination
- Types II, III, IV, V distributions
- 3000K, 4000K, 5000K CCT
- 0-10V dimming ready
- Integral surge suppression
- Integral thermal protection



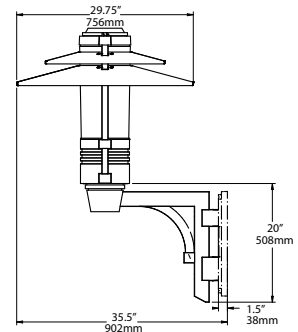
SPECIFICATIONS



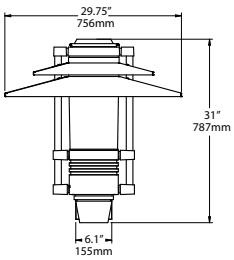
POST TOP
WT: 49 lbs. EPA: 2.83



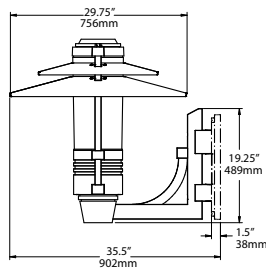
PSA-TU
(Top of Arm Mounted Luminaire
Upward Swept Arm Design)
WT: 66 lbs. EPA: 3.36



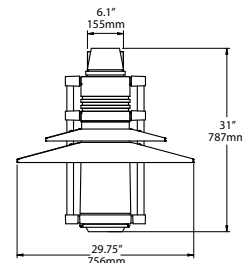
PSWM-TU
(Top of Wall Mounted Luminaire
Upward Swept Arm Design)
WT: 70 lbs. EPA: 3.58



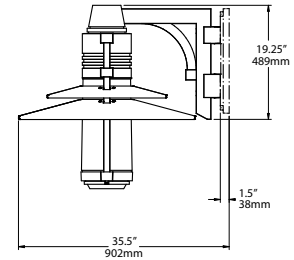
PSA-TD
(Top of Arm Mounted Luminaire
Downward Swept Arm Design)
WT: 66 lbs. EPA: 3.36



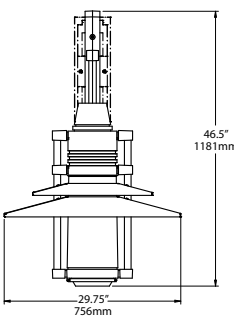
PSWM-TD
(Top of Wall Mounted Luminaire
Downward Swept Arm Design)
WT: 70 lbs. EPA: 3.58



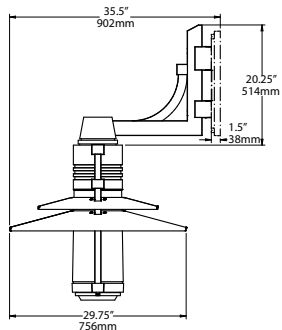
PSA-BU
(Below Arm Mounted Luminaire
Upward Swept Arm Design)
WT: 66 lbs. EPA: 3.36



PSWM-BU
(Below Wall Mounted Luminaire
Upward Swept Arm Design)
WT: 70 lbs. EPA: 3.58



PSA-BD
(Below Arm Mounted Luminaire
Downward Swept Arm Design)
WT: 66 lbs. EPA: 3.36



PSWM-BD
(Below Wall Mounted Luminaire
Downward Swept Arm Design)
WT: 70 lbs. EPA: 3.58

Decorative Screens



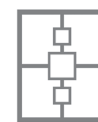
DSIN
Infinity



DSOF
Offset



DSWH
Wheat



DSTR
Trio



DSSH
Shutter



DSCS
Custom

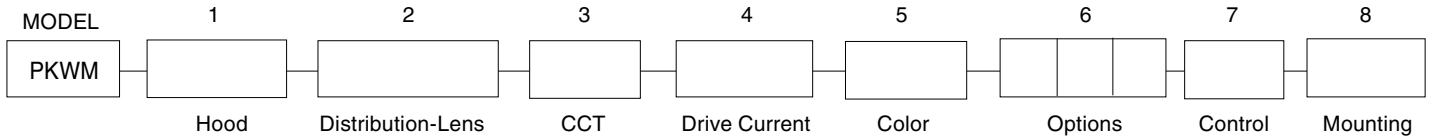
Painted to match fixture. Also available in stainless steel or copper. *Contact factory for custom designs.



ARCHITECTURAL AREA LIGHTING
16555 East Gale Ave. | City of Industry | CA 91745
P 626.968.5666 | F 626.369.2695 | www.aal.net
Copyright © 2014 | Rev 2.15

JOB _____
TYPE _____
NOTES _____

ORDERING INFORMATION



1. HOOD

ANGLED
ANG

STRAIGHT
STR

DOUBLE
DBL

2. DISTRIBUTION

Vertical LED – Clear Lens

Y2VC
Y3VC
Y4VC
Y5VC

Vertical LED – Diffused Lens

Y2VD
Y3VD
Y4VD
Y5VD

3. COLOR TEMPERATURE

32LED-3K
32LED-4K
32LED-5K

4. DRIVE CURRENT (120-277 VAC input)

525 (525mA, 58 watts)
350 (350mA, 38 watts)

5. COLOR

BLS Black Gloss Smooth

BLT Black Matte Textured

DBS Dark Bronze Gloss Smooth

DBT Dark Bronze Matte Textured

GTT Graphite Matte Textured

LGS Light Grey Gloss Smooth

LGT Light Grey Matte Textured

PSS Platinum Silver Smooth

VGT Verde Green Textured

WHS White Gloss Smooth

WHT White Matte Textured

Color Option

CC* Custom Color

** Consult factory for custom color, marine and corrosive finish options*

6. OPTIONS

FUSING

FS1 (Single fuse holder)

HOOD FINISH

COP (Copper) STS (Stainless steel)

DECORATIVE SCREEN

DSIN (Infinity pattern)

DSOF (Offset pattern)

DSWH (Wheat pattern)

DSTR (Trio pattern)

DSSH (Shutter pattern)

DSCS (Custom pattern)

SCREEN FINISH

CPR (Screen in natural copper material)

SSP (Screen in natural stainless material)

7. CONTROL

SCP (Sensor Control Programmable) pole accessory is available to provide occupancy detection for outdoor applications meeting California Title 24. For complete spec sheet and ordering information, visit www.aal.net/products/sensor_control_programmable/

8. MOUNTING – Standard mounting slips over a 4"/100mm open top square pole or tenon or may choose one

TENON MOUNT

TA23 (Tenon adapter slips over 2 3/8" O.D x 4" long tenon. Required for poles by others or used in conjunction with TEN pole option by AAL.)

WALL MOUNT

PSWM-TU (Fixture above with arm mounted up)

PSWM-TD (Fixture above with arm mounted down)

PSWM-BU (Fixture below with arm mounted up)

PSWM-BD (Fixture below with arm mounted down)

POLE MOUNTED ARM – mounts to the side of a square pole or to the side of a 4" od pole (specify)

PSA-TU (Fixture above with arm mounted up)

PSA-TD (Fixture above with arm mounted down)

PSA-BU (Fixture below with arm mounted up)

PSA-BD (Fixture below with arm mounted down)

[Visit www.aal.net](http://www.aal.net) for Arms, Poles & Accessories Specification Guide

LUMINAIRE PERFORMANCE

Optical System	Lens	Distribution	LigVt Engine	Luminaire Performance Data												Drive Current (ma)	System Watts			
				3K			4K			5K										
				Delivered Lumens	Efficacy (lm/w)	Bug Rating	Delivered Lumens	Efficacy (lm/w)	Bug Rating	Delivered Lumens	Efficacy (lm/w)	Bug Rating								
YLED	Clear Lens	TYPE 2	Y2VC	3,369	58	1	2	2	4,222	73	2	3	2	4,470	77	2	3	3	525	58
		TYPE 3	Y3VC	3,418	59	1	2	2	4,283	74	1	2	2	4,535	78	1	2	2		
		TYPE 4	Y4VC	3,285	57	1	2	2	4,117	71	1	2	2	4,360	75	1	3	3		
		TYPE 5	Y5VC	3,548	61	2	2	2	4,446	77	3	2	2	4,708	81	3	2	2		
		TYPE 2	Y2VC	2,452	65	1	2	2	3,073	81	1	2	2	3,253	86	1	2	2		
	Diffused Lens	TYPE 3	Y3VC	2,488	65	1	2	1	3,117	82	1	2	2	3,301	87	1	2	2	350	38
		TYPE 4	Y4VC	2,391	63	1	2	2	2,996	79	1	2	2	3,173	84	1	2	2		
		TYPE 5	Y5VC	2,582	68	2	2	1	3,235	85	2	2	2	3,426	90	2	2	2		
		TYPE 2	Y2VD	1,938	33	1	3	2	2,343	40	1	3	2	2,531	44	1	3	2		
		TYPE 3	Y3VD	2,113	36	1	3	2	2,556	44	1	3	2	2,761	48	1	3	2		
		TYPE 4	Y4VD	2,010	35	1	3	2	2,432	42	1	3	2	2,626	45	1	3	2		
		TYPE 5	Y5VD	2,088	36	1	3	2	2,526	44	1	3	2	2,729	47	1	3	2		
		TYPE 2	Y2VD	1,410	37	1	3	2	1,706	45	1	3	2	1,842	48	1	3	2		
		TYPE 3	Y3VD	1,538	40	1	3	2	1,861	49	1	3	2	2,010	53	1	3	2		
		TYPE 4	Y4VD	1,463	39	1	3	2	1,770	47	1	3	2	1,912	50	1	3	2		
TYPE 5	Y5VD	1,520	40	1	3	2	1,839	48	1	3	2	1,986	52	1	3	2				

ELECTRICAL CHARACTERISTICS

Optical System	Ordering Code	Electrical Characteristics								Inrush Current				Dimming	
		LED Drive mA	System Watts	Amps AC		Min. Power Factor	Max THD (%)	Operating Temp. Range	120V		277V		Dimming Range	Source Current out of 0-10V Purple Wire	
				120	277				Ipeak (A)	T(@50% of Ipeak)	Ipeak (A)	T(@50% of Ipeak)			
YLED	32LED	525	525	58	0.5	0.2	0.9	20	-40°C TO +55°C	21	160 µS	49	160 µS	10% to 100%	1 mA
	350	350	38	0.3	0.1										

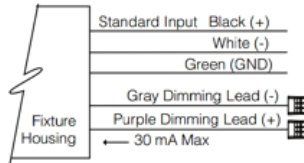
LED COLOR

Consult factory for Amber, Turtle Friendly, Gulf Coast and Observatory applications.

	Ordering Code		
	3K	4K	5K
CCT Average	3000K	4000K	5000K
CRI Minimum	≥ 80	≥ 70	≥ 70

WIRING LEADS

Luminaires not configured with wiHUBB or photo-control shall be provided with 0-10 purple and gray dimming leads.



TM-21 LIFETIME CALCULATION

Optical System	Ordering Code	Ambient Environment °C	Projected Lumen Maintenance (% vs. Khrs)					Reported L70
			25	50	TM-21* 60	70	100	
YLED	32LED	15	97	96	95	93	93	>60Khrs
		25	96	94	93	90	90	
		40	94	91	90	86	86	



ARCHITECTURAL AREA LIGHTING
 16555 East Gale Ave. | City of Industry | CA 91745
 P 626.968.5666 | F 626.369.2695 | www.aal.net
 Copyright © 2014 | Rev 2.15

JOB	_____
TYPE	_____
NOTES	_____

SPECIFICATIONS

HOUSING

- All housing components shall be cast aluminum, sealed with continuous silicone rubber gaskets.
- Hoods shall be of fabricated construction with seamless blended outside corners. Optional natural stainless steel and or natural copper hoods shall have a horizontal brushed grain. Natural copper hoods shall naturally oxidize over time.
- Secondary lens shall be clear injection molded acrylic.
- All internal and external hardware shall be stainless steel.

OPTICAL

- LEDs shall be mounted to a metal printed circuit board assembly (MCPCB) with a uniform conformal coating over the panel surface and electrical features.
- LED optics shall be clear injection molded PMMA acrylic.
- MCPCB and optic shall be sealed to a die-cast anodized aluminum heat sink with an injection molded silicone rubber gasket. IP66.

ELECTRICAL

- Luminaires shall have integral surge protection that shall be U.L. recognized and have a surge current rating of 10,000 Amps using the industry standard 8/20uSec wave and surge rating of 372J.
- Drivers shall be U.L. recognized with an inrush current maximum of <20.0 Amps maximum at 230VAC.
- Drivers shall not be compatible with current sourcing dimmers, consult factory for current list of known compatible dimming systems, approved dimmers include Lutron Diva AVTV, Lutron Nova NFTV and NTFTV.
- Luminaire shall be capable of operating at 100% brightness in a 40°C environment. Both driver and optical array shall have integral thermal protection that will dim the luminaire upon detection of temperatures in excess of 85°C.

CONTROLS

- SCP shall have an integral surge protection device with a current rating of 10,000 Amps using the industry standard 8/20uSec wave and surge rating of 372J
- Sensor not intended for use with additional photo-control, wireless control or dimming systems.

SERVICING

- Gear compartment shall be accessed via the removal of four 1/4-20 fasteners. Driver and surge suppressor shall be mounted to a pre-wired tray with quick disconnects that may be removed from the gear compartment.

ARM MOUNTING

- Luminaire shall be attached to the arm assembly with four 1/4-20 stainless steel bolts. The connection shall be sealed with a silicone compression gasket.
- Pole mounted arms shall bolt to a square pole or a 4"/100mm diameter round pole and secured with two bolts with a minimum 3/8-16 thread size, hardware by others.
- Wall mounted arms and brackets shall require mounting hardware by others.

FINISH

- Luminaire finish shall consist of a five stage pretreatment regimen with a polymer primer sealer, oven dry off, and top coated with a thermoset super TGIC polyester powder coat finish
- Luminaire finish shall meet the AAMA 2604-05 performance specification which includes passing a 3000 hour salt spray test for corrosion resistance.

CERTIFICATION

- Luminaire shall be listed with ETL for outdoor, wet location use, UL1598, UL 8750 and Canadian CSA Std. C22.2 no.250.

WARRANTY / TERMS AND CONDITIONS OF SALE

Download:

<http://www.hubbelling.com/resources/warranty/>

