



Project Name: Laketon-Lakeshore Trail Connector

Project Type: A new non-motorized trail along the east side of Sanford Street and the west side of Terrace Avenue, from Laketon to Shoreline Drive.

Contractor: TBD

City Neighborhood(s): McLaughlin, Nelson

Project Summary: Along the east side of Sanford from Laketon to Apple, the existing sidewalk will be removed and replaced with a 10-foot-wide non-motorized trail made of concrete. As part of the Apple Avenue reconstruction, a crossing of Apple will be installed including flashing warning lights that can be turned on by a button near the trail. From Apple to Shoreline Drive, the existing sidewalks (in some areas there are two) will be removed and replaced with a new 10-foot-wide non-motorized trail made of concrete along the west side of Terrace Avenue. The crossing at Shoreline Drive will use the pedestrian signals that are part of the existing traffic signal.

Changes to Expect: When complete, residents and visitors will have the ability to get from the Laketon Trail to the Lakeshore Trail on a protected, dedicated trail.

Timeline/Timeframe: The project is expected to start later in the spring or early summer and be complete by the end of fall.

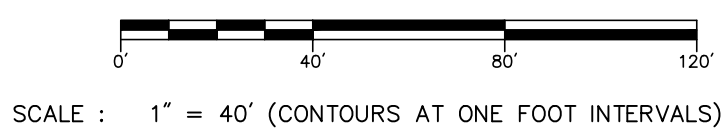
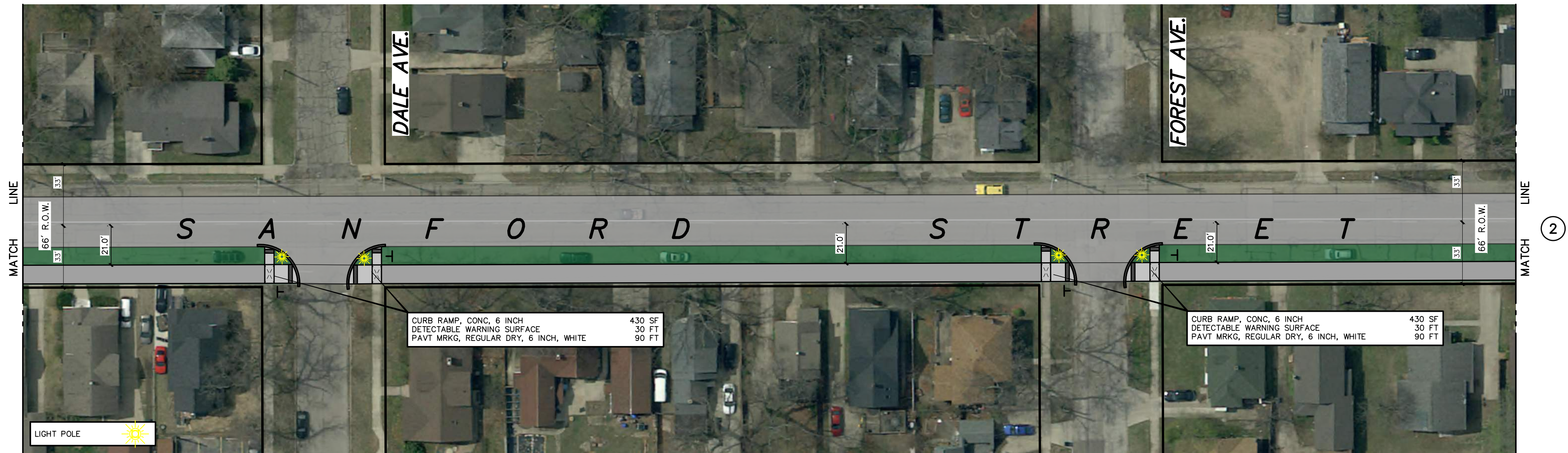
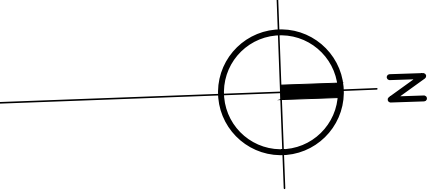
Lane, Road or Intersection Shutdown: Sanford and Terrace will have lane closures to allow the contractor to work from the road to install the trail. Homes along Sanford and businesses along Terrace may experience times when their driveway is disrupted or closed. Side streets may also be closed at certain times.

Contractor Project Update Link: TBD

Project Contact Information:

Todd Myers
Deputy Director of Public Works
Todd.myers@shorelinecity.com
(231) 724-6920

Matt Hulst
Prein & Newhof (Consultant)
Mhulst@preinnewhof.com
(231) 798-0101



NO.	REVISIONS	BY	DATE	DRAWN

CITY OF MUSKOGON
CITY OF MUSKOGON, MICHIGAN

LAKETON LAKESHORE TRAIL CONNECTOR
PHASE ___

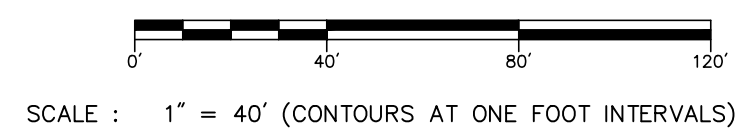
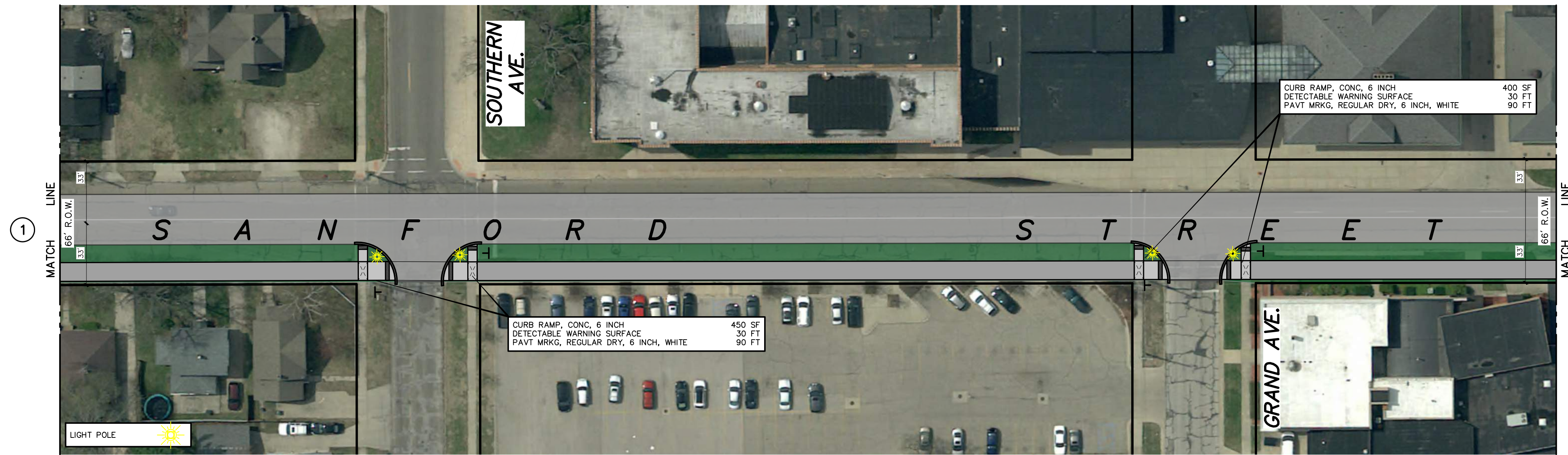
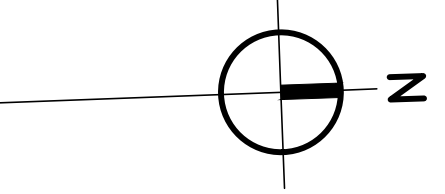
SANFORD STREET

PROJECT NO.
2220254

SHEET NO.
1 OF X

T:\O\10\PROJECTS\2023\2220254_MUSKOGON_LAKETON TRAIL CONN\1_P\001\2220254_P1R SANFORD ST.DWG - CHLNDTCH - Feb. 21, 2023 - 03:36pm - PreinNewhof

UTILITY LOCATIONS ARE DERIVED FROM ACTUAL MEASUREMENTS OR AVAILABLE RECORDS. THEY SHOULD NOT BE INTERPRETED TO BE EXACT LOCATIONS NOR SHOULD IT BE ASSUMED THAT THEY ARE THE ONLY UTILITIES IN THIS AREA.



NO.	REVISIONS	BY	DATE	DRAWN

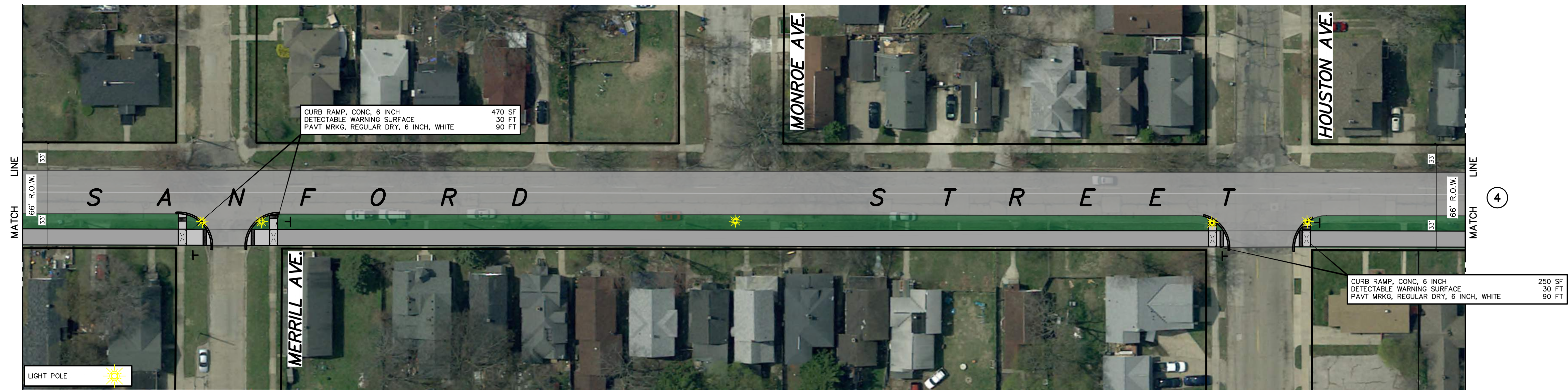
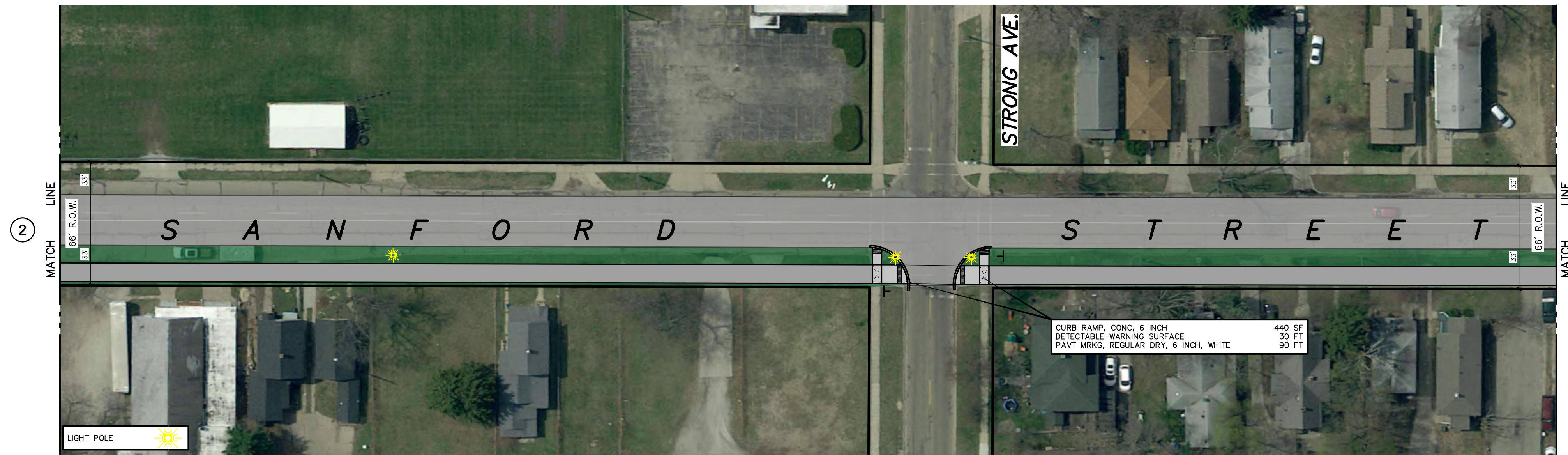
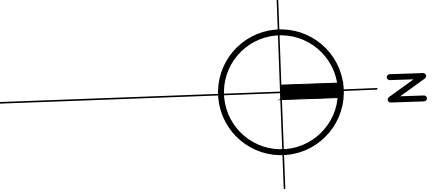
Prein & Newhof
 Engineers • Surveyors • Environmental • Laboratory

CITY OF MUSKOGON
 CITY OF MUSKOGON, MICHIGAN
 LAKETON LAKESHORE TRAIL CONNECTOR
 PHASE ___
SANFORD STREET

PROJECT NO.
2220254
 SHEET NO.
2 OF X



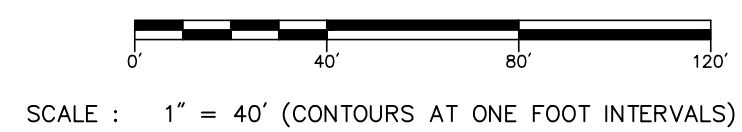
UTILITY LOCATIONS ARE DERIVED FROM ACTUAL MEASUREMENTS OR AVAILABLE RECORDS. THEY SHOULD NOT BE INTERPRETED TO BE EXACT LOCATIONS NOR SHOULD IT BE ASSUMED THAT THEY ARE THE ONLY UTILITIES IN THIS AREA.



T:\GVD\PROJECTS\2023\2220254_MUSKEGON\TRAIL_CONN\L_P\00\2220254_P1R_SANFORD_ST.DWG - CHLNDTCH - Feb, 21, 2023 - 08:37pm - Prein&Newhof

811
Know what's below.
Call before you dig.

UTILITY LOCATIONS ARE DERIVED FROM ACTUAL MEASUREMENTS OR AVAILABLE RECORDS. THEY SHOULD NOT BE INTERPRETTED TO BE EXACT LOCATIONS NOR SHOULD IT BE ASSUMED THAT THEY ARE THE ONLY UTILITIES IN THIS AREA.



NO.	REVISIONS	BY	DATE	DRAWN

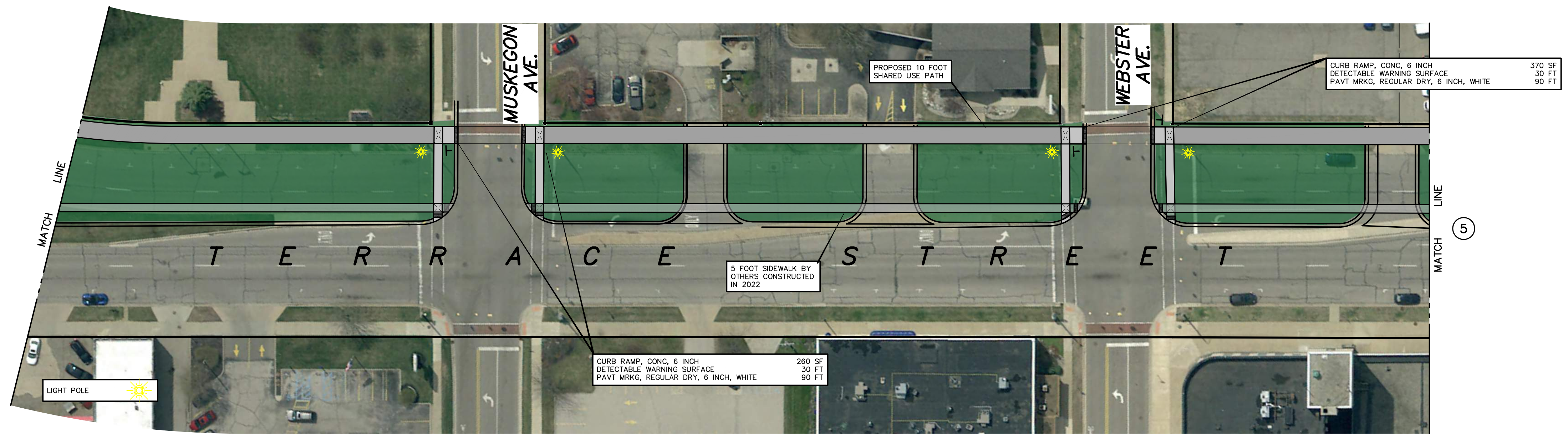
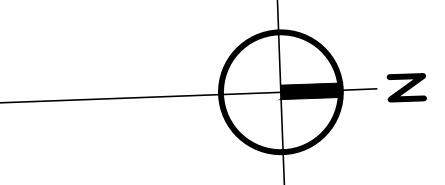
Prein & Newhof
Engineers • Surveyors • Environmental • Laboratory

CITY OF MUSKEGON
CITY OF MUSKEGON, MICHIGAN
LAKETON LAKESHORE TRAIL CONNECTOR
PHASE ---
SANFORD STREET

PROJECT NO.
2220254

SHEET NO.

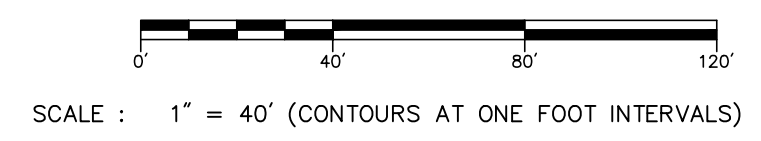
3 OF **X**



T:\OUT\PROJECTS\2023\2220254_MUSKEGON_TRAIL_CONNECTOR_SANFORD_ST.DWG - CHLNDTCH - Feb. 21, 2022 - 03:37pm - Prein&Newhof

811
Know what's below.
Call before you dig.

UTILITY LOCATIONS ARE DERIVED FROM ACTUAL MEASUREMENTS OR AVAILABLE RECORDS. THEY SHOULD NOT BE INTERPRETED TO BE EXACT LOCATIONS NOR SHOULD IT BE ASSUMED THAT THEY ARE THE ONLY UTILITIES IN THIS AREA.



NO.	REVISIONS	BY	DATE	DRAWN

Prein & Newhof
Engineers • Surveyors • Environmental • Laboratory

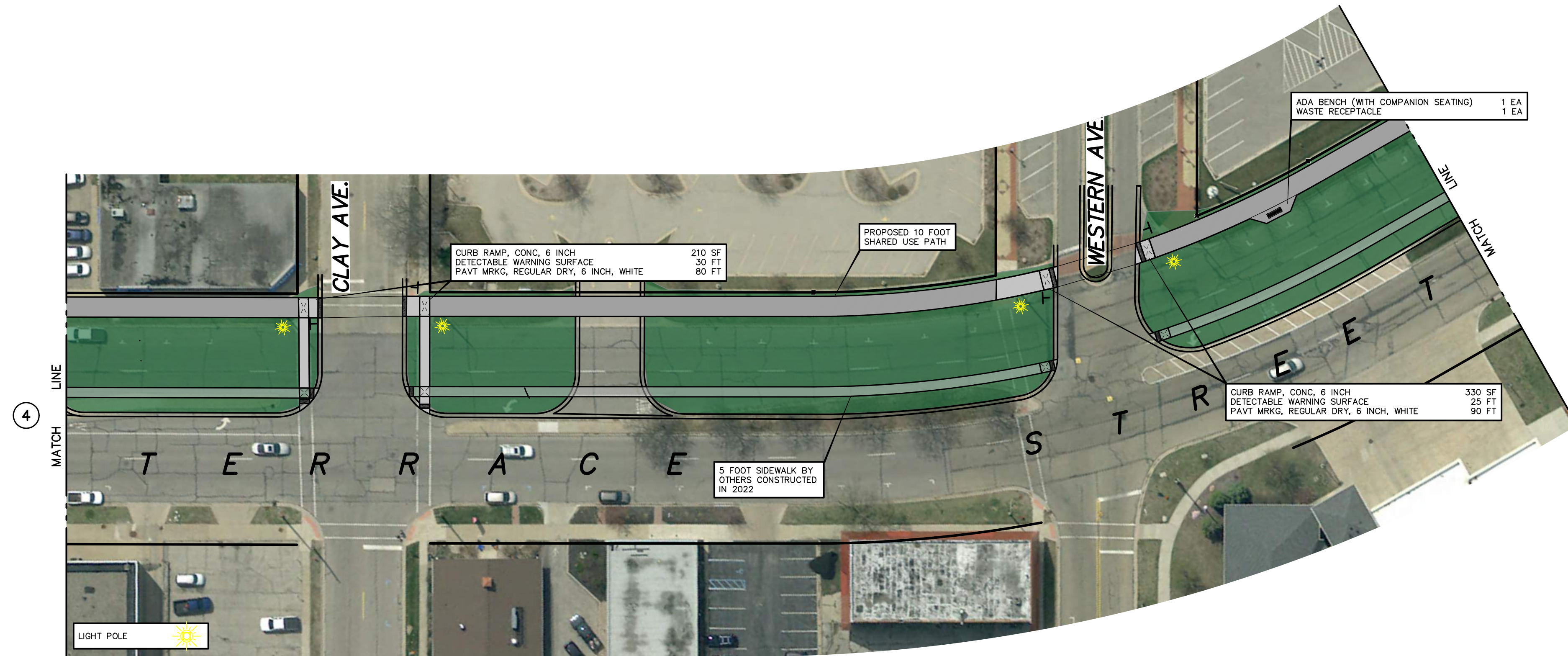
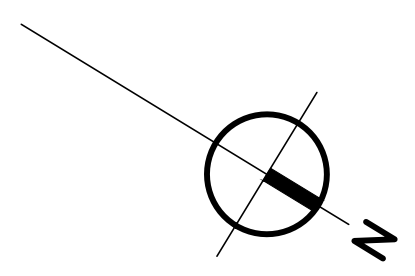
CITY OF MUSKEGON
CITY OF MUSKEGON, MICHIGAN

LAKETON LAKESHORE TRAIL CONNECTOR
PHASE ___

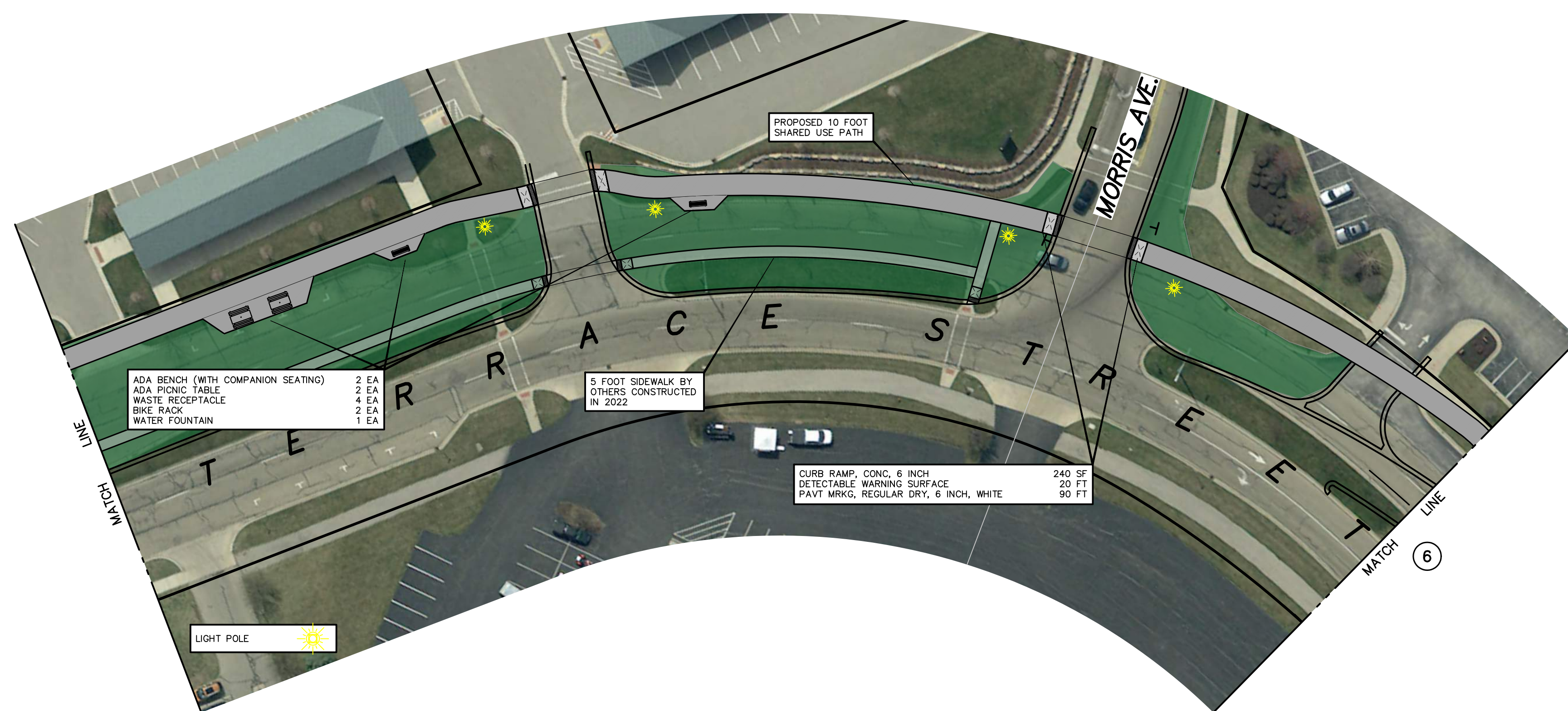
SANFORD STREET

PROJECT NO.
2220254

SHEET NO.
4 OF **X**



4

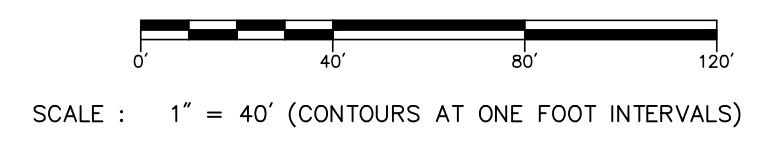


6

T:\CADD\PROJECTS\2022\2220254_MUSKEGON_LAKETON TRAIL CONN\2220254_LPR_SANFORD_ST.DWG - CALDWELL - Feb. 21, 2022 - 08:37pm - Prein&Newhof

811
Know what's below.
Call before you dig.

UTILITY LOCATIONS ARE DERIVED FROM ACTUAL MEASUREMENTS OR AVAILABLE RECORDS. THEY SHOULD NOT BE INTERPRETED TO BE EXACT LOCATIONS NOR SHOULD IT BE ASSUMED THAT THEY ARE THE ONLY UTILITIES IN THIS AREA.



NO.	REVISIONS	BY	DATE	DRAWN

Prein & Newhof
Engineers • Surveyors • Environmental • Laboratory

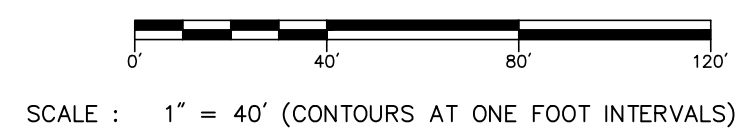
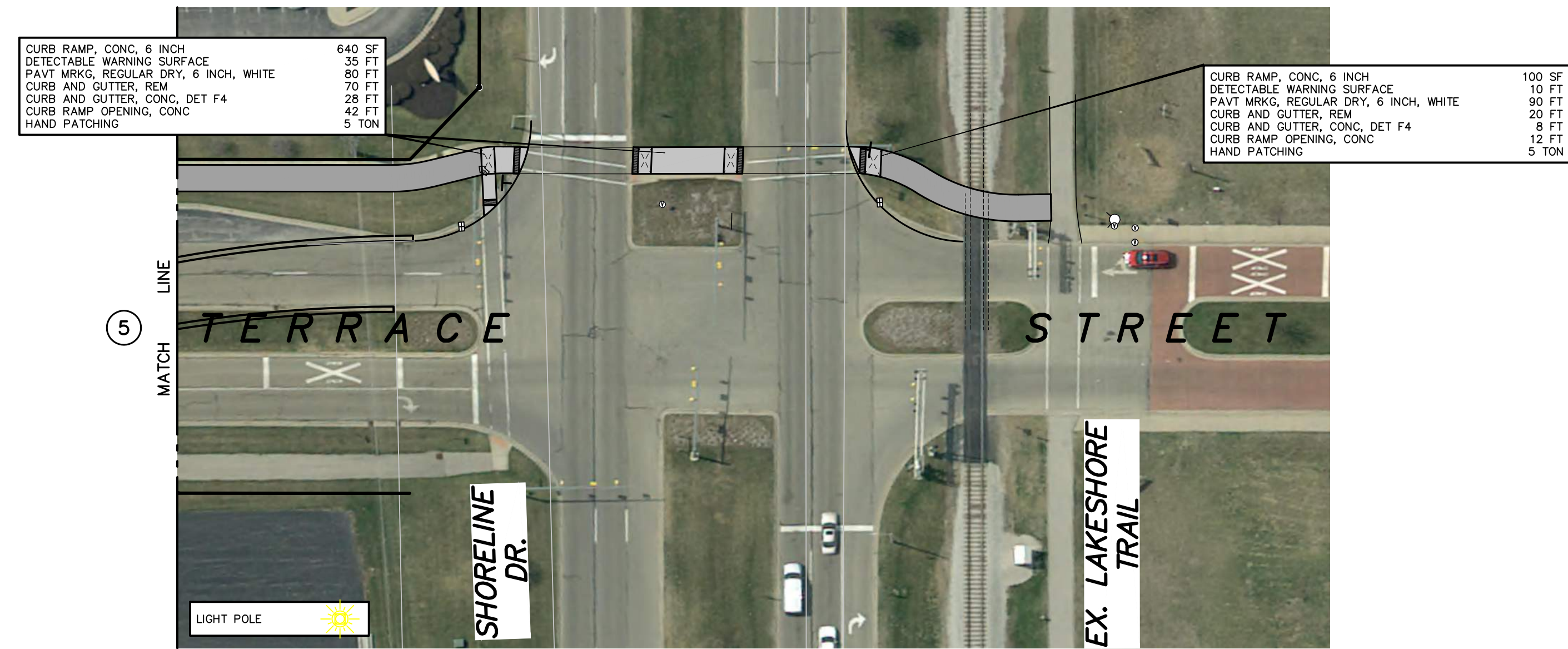
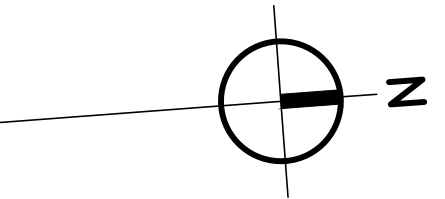
CITY OF MUSKEGON
CITY OF MUSKEGON, MICHIGAN

LAKETON LAKESHORE TRAIL CONNECTOR
PHASE ---

TERRACE STREET

PROJECT NO.
2220254

SHEET NO.
5 OF **X**



NO.	REVISIONS	BY	DATE	DRAWN

Prein & Newhof
 Engineers • Surveyors • Environmental • Laboratory

CITY OF MUSKOGON
 CITY OF MUSKOGON, MICHIGAN
 LAKETON LAKESHORE TRAIL CONNECTOR
 PHASE ---
TERRACE STREET

PROJECT NO.
2220254
 SHEET NO.
6 OF **X**



UTILITY LOCATIONS ARE DERIVED FROM ACTUAL MEASUREMENTS OR AVAILABLE RECORDS. THEY SHOULD NOT BE INTERPRETED TO BE EXACT LOCATIONS NOR SHOULD IT BE ASSUMED THAT THEY ARE THE ONLY UTILITIES IN THIS AREA.

CITY OF MUSKEGON

MUSKEGON COUNTY, MICHIGAN

IN COOPERATION WITH

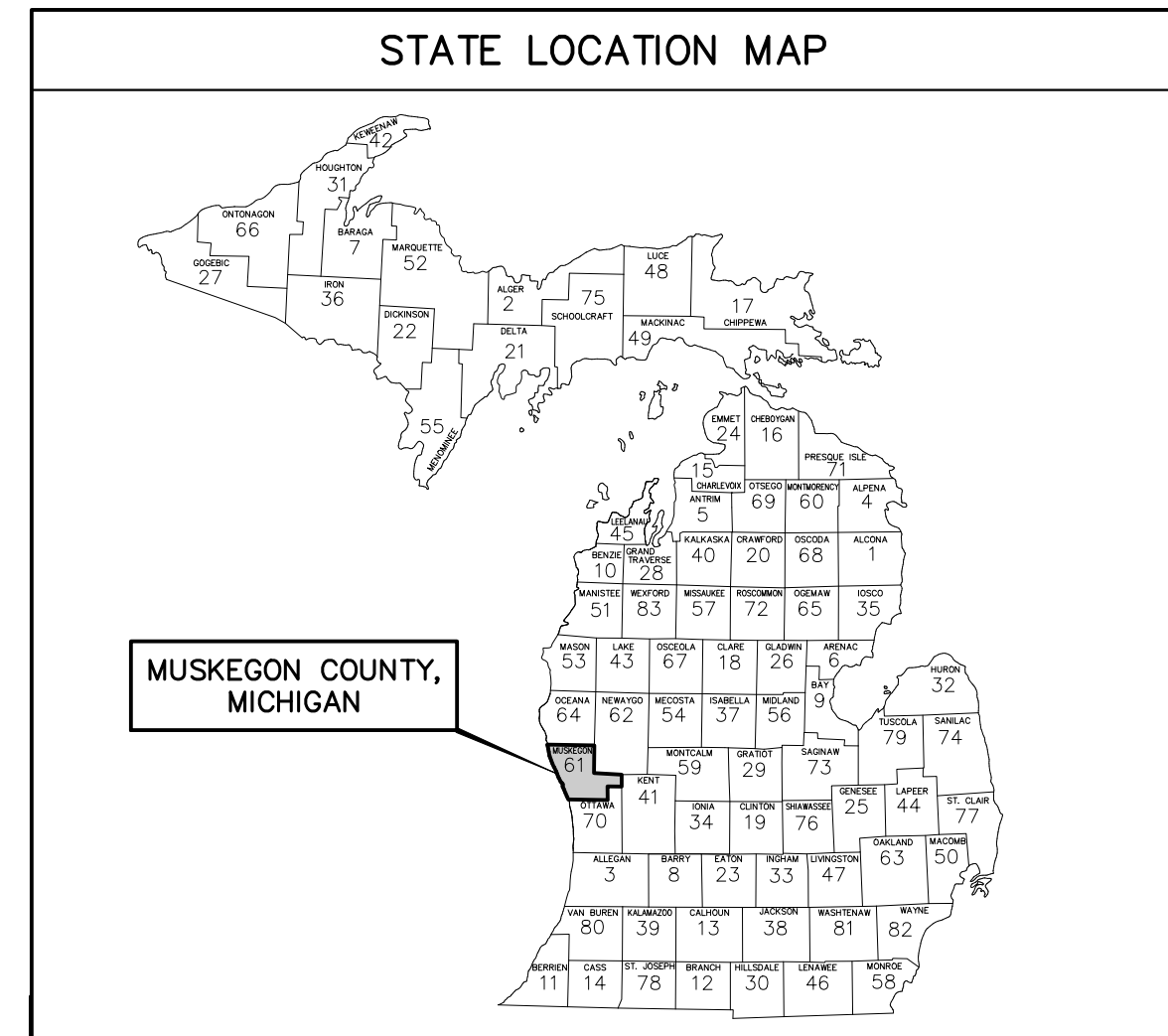
MICHIGAN DEPARTMENT OF TRANSPORTATION

AND

FEDERAL HIGHWAY ADMINISTRATION

LAKETON SHORELINE TRAIL CONNECTOR

JOB NUMBER : 222756
CONTROL SECTION : 61000



SHEET INDEX	
SHEET No.	DESCRIPTION
1	COVER SHEET
2	DETAILS
3	SANFORD STREET (STA. 40+49 POB TO STA. 55+00)
4	SANFORD STREET (STA. 55+00 TO STA. 71+00)
5	SANFORD STREET (STA. 71+00 TO STA. 87+00)
6	SANFORD STREET (STA. 87+00 TO STA. 93+00)
7	TERRACE STREET (STA. 93+00 TO STA. 108+00)
8	TERRACE STREET (STA. 108+00 TO STA. 121+71 POE)
9	SIDEWALK GRADING DETAILS

SANFORD STREET & TERRACE STREET TRAFFIC DATA	
2025 ADT	3,500
2045 ADT	5,200
2025 & 2045 PERCENT COMMERCIAL	4%
POSTED SPEED	25 MPH

PROJECT LENGTH	
SANFORD STREET & TERRACE STREET	1.4 MILES

CONTRACT FOR: 1.4 MILES OF SIDEWALK INCLUDING EARTHWORKS, CONCRETE AND HMA PAVEMENT, AND CONCRETE CURB & GUTTER, IN THE CITY OF MUSKEGON, MUSKEGON COUNTY.

MUNICIPAL APPROVAL

Sign & Seal for Finals

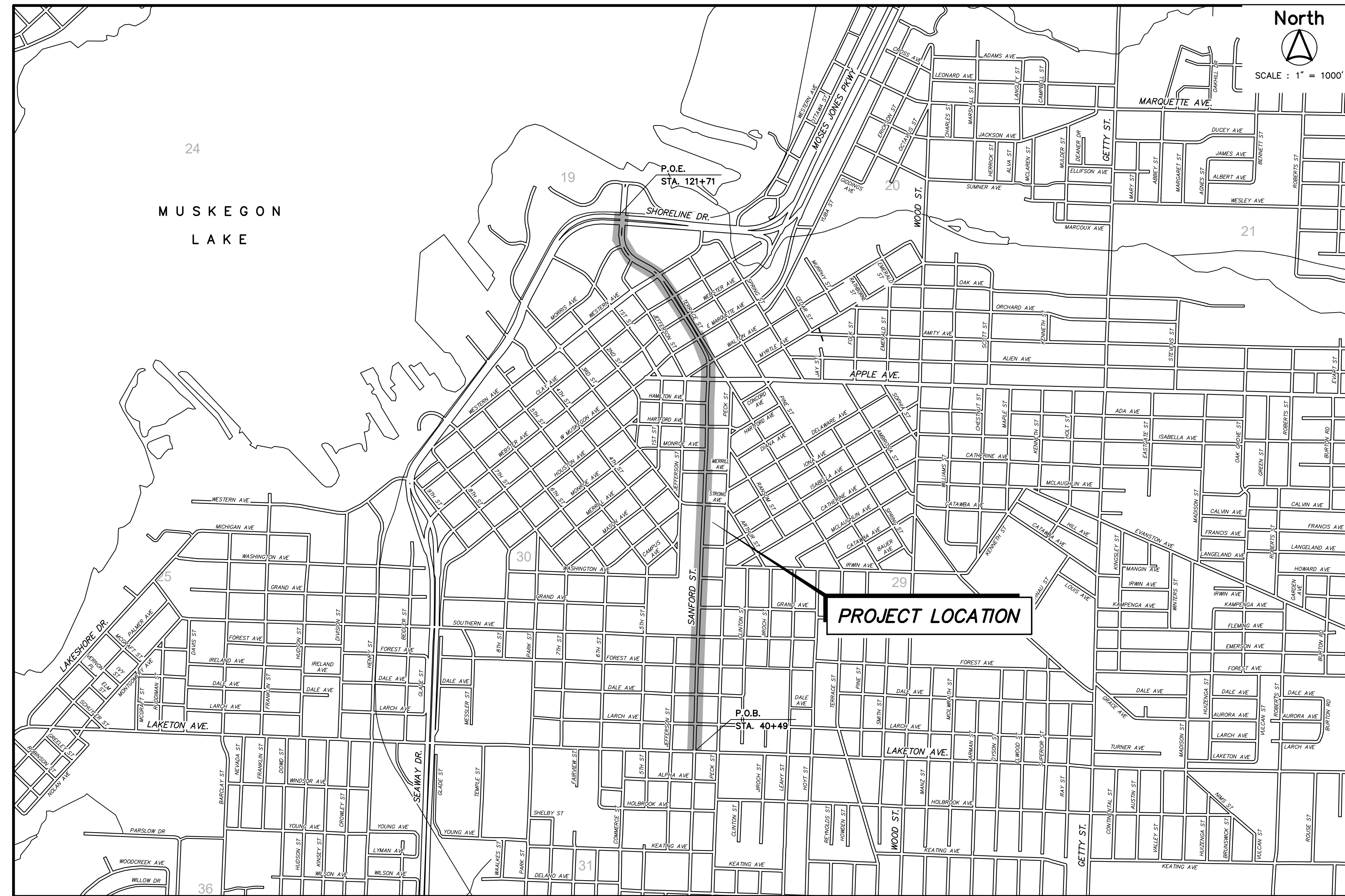
KYLE KARCEWSKI DIRECTOR OF PARKS AND RECREATION _____ DATE _____

PREPARED UNDER SUPERVISION OF

6201057572
REGISTRATION NO.

PREIN & NEWHOF, INC.

3355 EVERGREEN DRIVE NE, GRAND RAPIDS, MI 49525
ADDRESS



STANDARD PLANS & SPECIAL DETAILS	
COVER B	R-7-F
CURB RAMP AND DETECTABLE WARNING DETAILS	R-28-K
DRIVEWAY OPENINGS & APPROACHES, AND CONCRETE SIDEWALK	R-29-J
CONCRETE CURB AND CONCRETE CURB & GUTTER	R-30-G
SOIL EROSION & SEDIMENTATION CONTROL MEASURES	R-96-E

GENERAL NOTES

- CONTRACTOR TO CALL MISS DIG (CALL TOLL FREE 1-800-482-7171) THREE WORKING DAYS BEFORE STARTING YOUR PROJECT. (EXCLUDING WEEKENDS AND HOLIDAYS)
- CONTRACTOR SHALL PRESERVE ALL GOVERNMENT AND PROPERTY CORNERS.

SOIL EROSION CONTROL NOTES

EROSION CONTROL BLANKET:
SOIL EROSION CONTROL BLANKET SHALL BE REPLACED ON ALL DISTURBED SLOPES THAT ARE 1 ON 3 OR STEEPER AND IN ALL DISTURBED DITCH BOTTOMS.

TEMPORARY SEEDING:
TEMPORARY SEEDING SHALL BE CAST ON ALL DISTURBED AREAS AS DIRECTED BY THE ENGINEER WITHIN 1 WEEK OF DISTURBANCE.

TRAFFIC & SAFETY STANDARD PLANS	
TYPICAL NUMBERING KEY	101-GEN-KEY
"B", "D", AND "L" TABLES, CHANNELIZING DEVICES SPACING, SIGN BORDER KEY, AND ROLL-AHEAD SPACING	101-GEN-SPACING
SHOULDER CLOSURE ON A 2-LANE UNDIVIDED ROADWAY	122-NFW-SHL-(R)

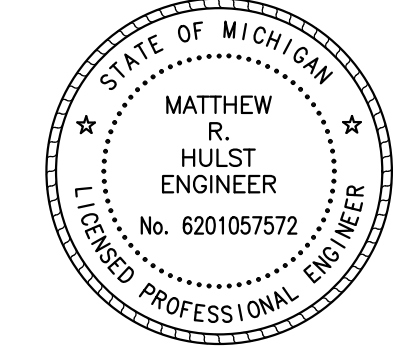
UTILITIES	
ELECTRIC-DISTRIBUTION CONSUMERS ENERGY 700 E. STERNBERG RD. MUSKEGON, MI 49441 PHONE : (231) 332-2682 ATTN: JOEL BROWN JOEL.M.BROWN@CSEENERGY.COM	STORM SEWER CITY OF MUSKEGON 1350 E. KEATING AVE. MUSKEGON, MI 49442 PHONE : (231) 724-6992 ATTN: VERNON BERNDT VERN.BERNDT@SHORELINECITY.COM
GAS DTE ENERGY 2359 OLTHOF DR. MUSKEGON, MI 49444 PHONE : (231) 726-0943 ATTN: ANTHONY FERRIER ANTHONY.FERRIER@TEENERGY.COM	COMMUNICATION FRONTIER COMMUNICATIONS 960 TERRACE ST. MUSKEGON, MI 49443 PHONE : (231) 727-1134 ATTN: CINDY WHITEMAN CINDY.WHITEMAN@FTR.COM
WATER & SANITARY CITY OF MUSKEGON 1350 E. KEATING AVE. MUSKEGON, MI 49442 PHONE : (231) 724-4184 ATTN: JOE BUTHKER JOE.BUTHKER@SHORELINECITY.COM	CABLE TELEVISION COMCAST 700 W. BROADWAY MUSKEGON, MI 49441 PHONE: (231) 375-5112 ATTN: JON CHARLAND JONATHAN_CHARLAND@COMCAST.COM



UTILITY LOCATIONS ARE DERIVED FROM ACTUAL MEASUREMENTS OR AVAILABLE RECORDS. THEY SHOULD NOT BE INTERPRETED TO BE EXACT LOCATIONS NOR SHOULD IT BE ASSUMED THAT THEY ARE THE ONLY UTILITIES IN THIS AREA.

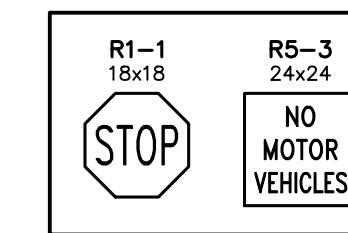
PROJECT DATUM INFORMATION

COORDINATE SYSTEM :	STATE PLANE GRID
ZONE :	MICHIGAN SOUTH 2113
ELLIPSOID :	GRS 80
HORIZONTAL DATUM :	NAD 83 (2011)
VERTICAL DATUM :	NAVD 88
GEOID :	GEOID 18
UNITS :	INTERNATIONAL FEET
PROJECT COMBINED SCALE FACTOR (PCSF) = 0.999924699274	
GROUND DISTANCE = GRID DISTANCE/PCSF	



<p>Prein & Newhof Engineers • Surveyors • Environmental • Laboratory</p>	PROJECT NO. 2220254
	SHEET NO. 1 OF 9

SIGN LEGEND

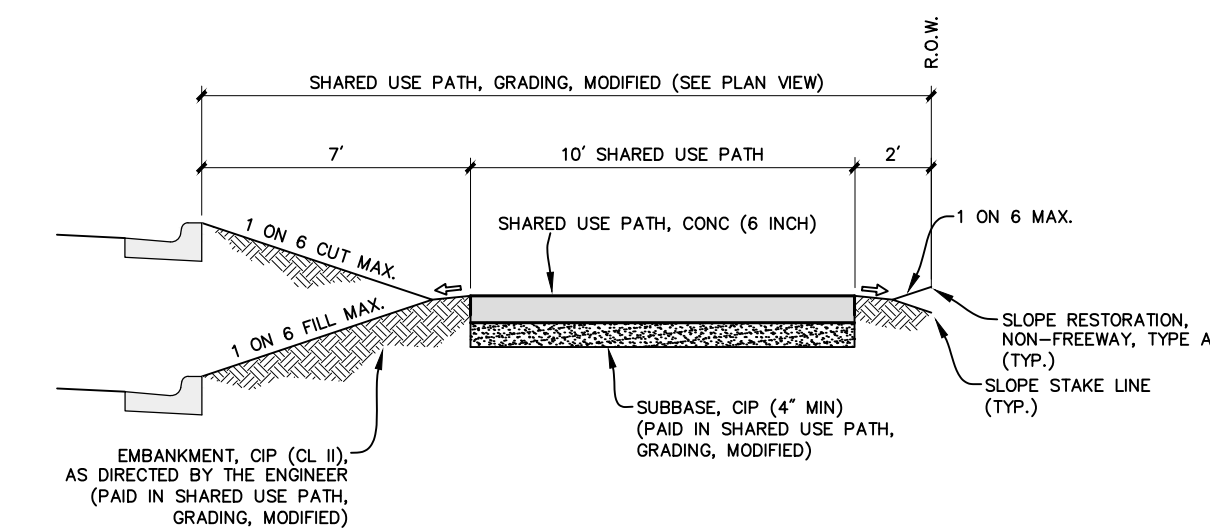


NOTE: SIGN DIMENSIONS IN INCHES

HMA APPLICATION TABLE

ITEM	RATE (PER SYD.)	PERFORMANCE GRADE	REMARKS	APPLICATION
SHARED USE PATH, HMA	165 LB	64-28	SEL BASE COURSE	PATH
SHARED USE PATH, HMA	165 LB	64-28	SEL TOP COURSE (AM-220 MIN)	
HAND PATCHING	330 LB	64-28	SEL. 2 - 165 LB LIFTS (AM-220 MIN)	HAND PATCHING

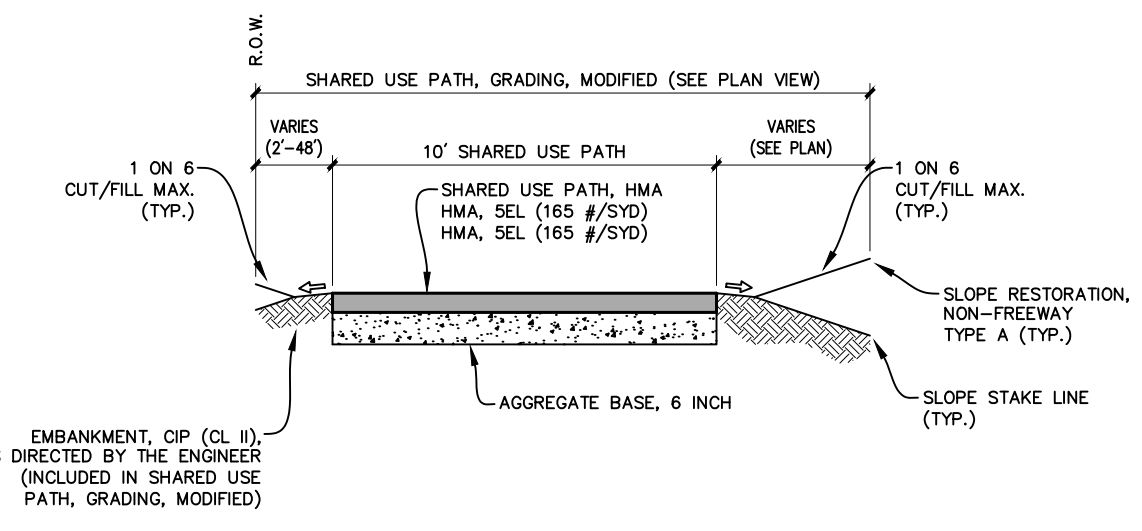
NOTE : BOND COAT MATERIAL SHALL BE APPLIED BETWEEN SUCCESSIVE COURSES OF HMA AT A RATE OF 0.09 GALLONS PER SQUARE YARD.



TYPICAL CONCRETE SHARED USE PATH CROSS SECTION

APPLIES : SANFORD ST.
SCALE : 1" = 5'

NOTE
SLOPE RESTORATION TO INCLUDE SEED MIX THM



TYPICAL HMA SHARED USE PATH CROSS SECTION

APPLIES : TERRACE ST.
SCALE : 1" = 5'

NOTE
SLOPE RESTORATION TO INCLUDE SEED MIX THM

T:\WORK\PROJECTS\2025\2220254_MUSKEGON_TERRACE MAP\PROJ\2220254_DETAILS.DWG - HSBAMER - Oct, 13, 2025 - 01:30pm - Prein&Newhof

NO.	REVISIONS	BY	DATE	DRAWN
				STAFF
				DATE
				JULY '25
				CHECKED
				M.R.H.
				DATE
				JULY '25

Prein & Newhof
Engineers • Surveyors • Environmental • Laboratory

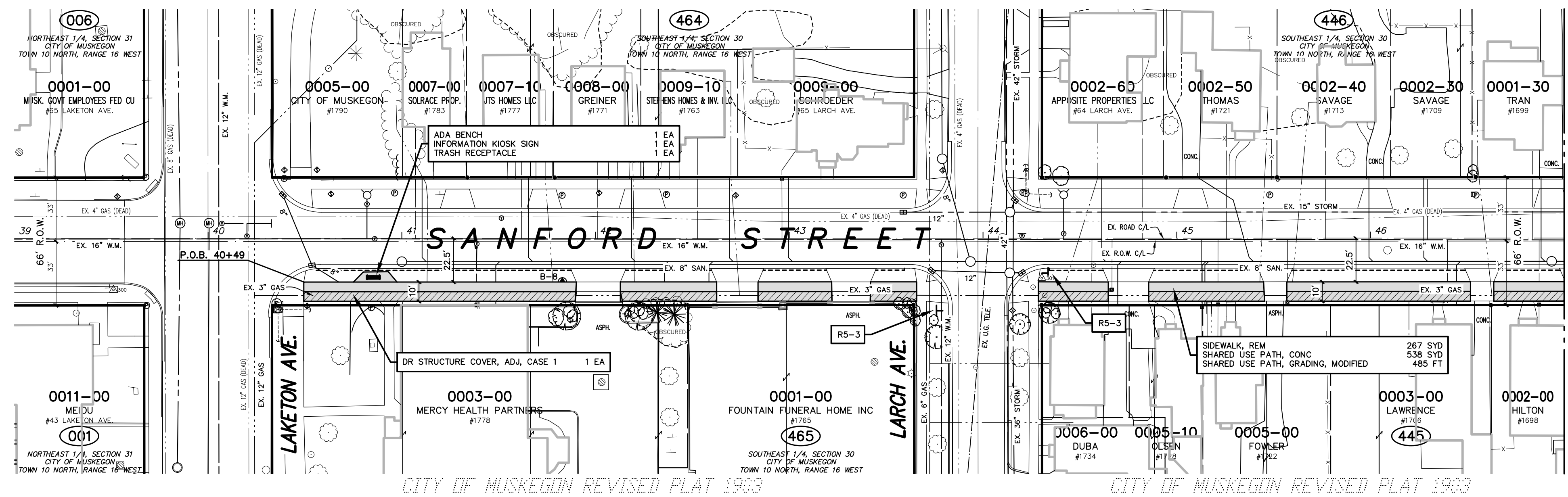
CITY OF MUSKEGON
MUSKEGON COUNTY, MICHIGAN
LAKETON SHORELINE TRAIL CONNECTOR
DETAILS

PROJECT NO.
2220254
SHEET NO.
2 OF 9

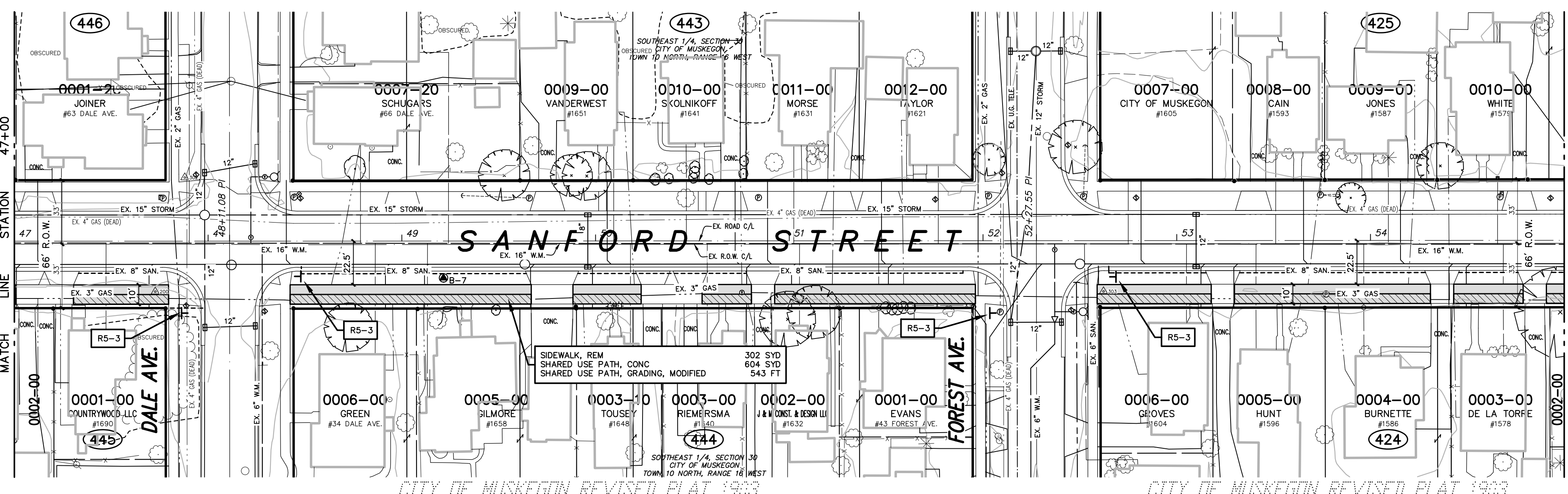
B.M. EL. 627.18
 SANFORD STREET & DALE AVENUE, 30' N
 & 20' W OF C/L 'X', RR SPIKE IN E. SIDE
 OF P. POLE

CONTROL POINT TABLE			
POINT No.	NORTHING	EASTING	ELEVATION
300	832258.004	12622595.300	625.88
301	832737.125	12622605.930	625.49

CONTROL POINT TABLE			
POINT No.	NORTHING	EASTING	ELEVATION
300	833279.109	12622623.090	630.44
302	833296.413	12622564.800	626.74
303	833568.290	12622638.950	626.72



- 39+48 P. POLE ON ELEC LINES - 34.5'
- 40+02 LEFT ARROW - 66.0'
- 45 GAS WATER - 36.8'
- 45 ELEC. W.H. - 33.6'
- 46 P. POLE ON ELEC LINES - 36.8'
- 47 UTILITY FED. ELEC ON POLE - 36.9'
- 48 SAN (STAMP) - 34.9'
- 49 SAN (STREET) - 36.9'
- 74 LSCAPING - 48.4'
- 75 LSCAPING - 39.8'
- 76 LSCAPING - 35.2'
- 77 LEFT ARROW - 4.2'
- 78 LEFT ARROW - 4.2'
- 79 LSCAPING - 39.5'
- 80 LSCAPING - 39.5'
- 81 GAS - 36.2'
- 82 GAS - 36.2'
- 83 GAS - 29.8'
- 84 GAS - 29.8'
- 85 WATER VALVE & BOX - 2.7'
- 463 GAS - 30.5'
- 464 BLOC. - 46.6'
- 465 BLOC. - 46.6'
- 466 BLOC. - 46.6'
- 467 BLOC. - 46.6'
- 468 BLOC. - 46.6'
- 469 BLOC. - 46.6'
- 470 BLOC. - 46.6'
- 471 BLOC. - 46.6'
- 472 BLOC. - 46.6'
- 473 BLOC. - 46.6'
- 474 BLOC. - 46.6'
- 475 BLOC. - 46.6'
- 476 BLOC. - 46.6'
- 477 BLOC. - 46.6'
- 478 BLOC. - 46.6'
- 479 BLOC. - 46.6'
- 480 BLOC. - 46.6'
- 481 BLOC. - 46.6'
- 482 BLOC. - 46.6'
- 483 BLOC. - 46.6'
- 484 BLOC. - 46.6'
- 485 BLOC. - 46.6'
- 486 BLOC. - 46.6'
- 487 BLOC. - 46.6'
- 488 BLOC. - 46.6'
- 489 BLOC. - 46.6'
- 490 BLOC. - 46.6'
- 491 BLOC. - 46.6'
- 492 BLOC. - 46.6'
- 493 BLOC. - 46.6'
- 494 BLOC. - 46.6'
- 495 BLOC. - 46.6'
- 496 BLOC. - 46.6'
- 497 BLOC. - 46.6'
- 498 BLOC. - 46.6'
- 499 BLOC. - 46.6'
- 500 BLOC. - 46.6'
- 501 BLOC. - 46.6'
- 502 BLOC. - 46.6'
- 503 BLOC. - 46.6'
- 504 BLOC. - 46.6'
- 505 BLOC. - 46.6'
- 506 BLOC. - 46.6'
- 507 BLOC. - 46.6'
- 508 BLOC. - 46.6'
- 509 BLOC. - 46.6'
- 510 BLOC. - 46.6'
- 511 BLOC. - 46.6'
- 512 BLOC. - 46.6'
- 513 BLOC. - 46.6'
- 514 BLOC. - 46.6'
- 515 BLOC. - 46.6'
- 516 BLOC. - 46.6'
- 517 BLOC. - 46.6'
- 518 BLOC. - 46.6'
- 519 BLOC. - 46.6'
- 520 BLOC. - 46.6'
- 521 BLOC. - 46.6'
- 522 BLOC. - 46.6'
- 523 BLOC. - 46.6'
- 524 BLOC. - 46.6'
- 525 BLOC. - 46.6'
- 526 BLOC. - 46.6'
- 527 BLOC. - 46.6'
- 528 BLOC. - 46.6'
- 529 BLOC. - 46.6'
- 530 BLOC. - 46.6'
- 531 BLOC. - 46.6'
- 532 BLOC. - 46.6'
- 533 BLOC. - 46.6'
- 534 BLOC. - 46.6'
- 535 BLOC. - 46.6'
- 536 BLOC. - 46.6'
- 537 BLOC. - 46.6'
- 538 BLOC. - 46.6'
- 539 BLOC. - 46.6'
- 540 BLOC. - 46.6'
- 541 BLOC. - 46.6'
- 542 BLOC. - 46.6'
- 543 BLOC. - 46.6'
- 544 BLOC. - 46.6'
- 545 BLOC. - 46.6'
- 546 BLOC. - 46.6'
- 547 BLOC. - 46.6'
- 548 BLOC. - 46.6'
- 549 BLOC. - 46.6'
- 550 BLOC. - 46.6'
- 551 BLOC. - 46.6'
- 552 BLOC. - 46.6'
- 553 BLOC. - 46.6'
- 554 BLOC. - 46.6'
- 555 BLOC. - 46.6'
- 556 BLOC. - 46.6'
- 557 BLOC. - 46.6'
- 558 BLOC. - 46.6'
- 559 BLOC. - 46.6'
- 560 BLOC. - 46.6'
- 561 BLOC. - 46.6'
- 562 BLOC. - 46.6'
- 563 BLOC. - 46.6'
- 564 BLOC. - 46.6'
- 565 BLOC. - 46.6'
- 566 BLOC. - 46.6'
- 567 BLOC. - 46.6'
- 568 BLOC. - 46.6'
- 569 BLOC. - 46.6'
- 570 BLOC. - 46.6'
- 571 BLOC. - 46.6'
- 572 BLOC. - 46.6'
- 573 BLOC. - 46.6'
- 574 BLOC. - 46.6'
- 575 BLOC. - 46.6'
- 576 BLOC. - 46.6'
- 577 BLOC. - 46.6'
- 578 BLOC. - 46.6'
- 579 BLOC. - 46.6'
- 580 BLOC. - 46.6'
- 581 BLOC. - 46.6'
- 582 BLOC. - 46.6'
- 583 BLOC. - 46.6'
- 584 BLOC. - 46.6'
- 585 BLOC. - 46.6'
- 586 BLOC. - 46.6'
- 587 BLOC. - 46.6'
- 588 BLOC. - 46.6'
- 589 BLOC. - 46.6'
- 590 BLOC. - 46.6'
- 591 BLOC. - 46.6'
- 592 BLOC. - 46.6'
- 593 BLOC. - 46.6'
- 594 BLOC. - 46.6'
- 595 BLOC. - 46.6'
- 596 BLOC. - 46.6'
- 597 BLOC. - 46.6'
- 598 BLOC. - 46.6'
- 599 BLOC. - 46.6'
- 600 BLOC. - 46.6'
- 601 BLOC. - 46.6'
- 602 BLOC. - 46.6'
- 603 BLOC. - 46.6'
- 604 BLOC. - 46.6'
- 605 BLOC. - 46.6'
- 606 BLOC. - 46.6'
- 607 BLOC. - 46.6'
- 608 BLOC. - 46.6'
- 609 BLOC. - 46.6'
- 610 BLOC. - 46.6'
- 611 BLOC. - 46.6'
- 612 BLOC. - 46.6'
- 613 BLOC. - 46.6'
- 614 BLOC. - 46.6'
- 615 BLOC. - 46.6'
- 616 BLOC. - 46.6'
- 617 BLOC. - 46.6'
- 618 BLOC. - 46.6'
- 619 BLOC. - 46.6'
- 620 BLOC. - 46.6'
- 621 BLOC. - 46.6'
- 622 BLOC. - 46.6'
- 623 BLOC. - 46.6'
- 624 BLOC. - 46.6'
- 625 BLOC. - 46.6'
- 626 BLOC. - 46.6'
- 627 BLOC. - 46.6'
- 628 BLOC. - 46.6'
- 629 BLOC. - 46.6'
- 630 BLOC. - 46.6'
- 631 BLOC. - 46.6'
- 632 BLOC. - 46.6'
- 633 BLOC. - 46.6'
- 634 BLOC. - 46.6'
- 635 BLOC. - 46.6'
- 636 BLOC. - 46.6'
- 637 BLOC. - 46.6'
- 638 BLOC. - 46.6'
- 639 BLOC. - 46.6'
- 640 BLOC. - 46.6'
- 641 BLOC. - 46.6'
- 642 BLOC. - 46.6'
- 643 BLOC. - 46.6'
- 644 BLOC. - 46.6'
- 645 BLOC. - 46.6'
- 646 BLOC. - 46.6'
- 647 BLOC. - 46.6'
- 648 BLOC. - 46.6'
- 649 BLOC. - 46.6'
- 650 BLOC. - 46.6'
- 651 BLOC. - 46.6'
- 652 BLOC. - 46.6'
- 653 BLOC. - 46.6'
- 654 BLOC. - 46.6'
- 655 BLOC. - 46.6'
- 656 BLOC. - 46.6'
- 657 BLOC. - 46.6'
- 658 BLOC. - 46.6'
- 659 BLOC. - 46.6'
- 660 BLOC. - 46.6'
- 661 BLOC. - 46.6'
- 662 BLOC. - 46.6'
- 663 BLOC. - 46.6'
- 664 BLOC. - 46.6'
- 665 BLOC. - 46.6'
- 666 BLOC. - 46.6'
- 667 BLOC. - 46.6'
- 668 BLOC. - 46.6'
- 669 BLOC. - 46.6'
- 670 BLOC. - 46.6'
- 671 BLOC. - 46.6'
- 672 BLOC. - 46.6'
- 673 BLOC. - 46.6'
- 674 BLOC. - 46.6'
- 675 BLOC. - 46.6'
- 676 BLOC. - 46.6'
- 677 BLOC. - 46.6'
- 678 BLOC. - 46.6'
- 679 BLOC. - 46.6'
- 680 BLOC. - 46.6'
- 681 BLOC. - 46.6'
- 682 BLOC. - 46.6'
- 683 BLOC. - 46.6'
- 684 BLOC. - 46.6'
- 685 BLOC. - 46.6'
- 686 BLOC. - 46.6'
- 687 BLOC. - 46.6'
- 688 BLOC. - 46.6'
- 689 BLOC. - 46.6'
- 690 BLOC. - 46.6'
- 691 BLOC. - 46.6'
- 692 BLOC. - 46.6'
- 693 BLOC. - 46.6'
- 694 BLOC. - 46.6'
- 695 BLOC. - 46.6'
- 696 BLOC. - 46.6'
- 697 BLOC. - 46.6'
- 698 BLOC. - 46.6'
- 699 BLOC. - 46.6'
- 700 BLOC. - 46.6'
- 701 BLOC. - 46.6'
- 702 BLOC. - 46.6'
- 703 BLOC. - 46.6'
- 704 BLOC. - 46.6'
- 705 BLOC. - 46.6'
- 706 BLOC. - 46.6'
- 707 BLOC. - 46.6'
- 708 BLOC. - 46.6'
- 709 BLOC. - 46.6'
- 710 BLOC. - 46.6'
- 711 BLOC. - 46.6'
- 712 BLOC. - 46.6'
- 713 BLOC. - 46.6'
- 714 BLOC. - 46.6'
- 715 BLOC. - 46.6'
- 716 BLOC. - 46.6'
- 717 BLOC. - 46.6'
- 718 BLOC. - 46.6'
- 719 BLOC. - 46.6'
- 720 BLOC. - 46.6'
- 721 BLOC. - 46.6'
- 722 BLOC. - 46.6'
- 723 BLOC. - 46.6'
- 724 BLOC. - 46.6'
- 725 BLOC. - 46.6'
- 726 BLOC. - 46.6'
- 727 BLOC. - 46.6'
- 728 BLOC. - 46.6'
- 729 BLOC. - 46.6'
- 730 BLOC. - 46.6'
- 731 BLOC. - 46.6'
- 732 BLOC. - 46.6'
- 733 BLOC. - 46.6'
- 734 BLOC. - 46.6'
- 735 BLOC. - 46.6'
- 736 BLOC. - 46.6'
- 737 BLOC. - 46.6'
- 738 BLOC. - 46.6'
- 739 BLOC. - 46.6'
- 740 BLOC. - 46.6'
- 741 BLOC. - 46.6'
- 742 BLOC. - 46.6'
- 743 BLOC. - 46.6'
- 744 BLOC. - 46.6'
- 745 BLOC. - 46.6'
- 746 BLOC. - 46.6'
- 747 BLOC. - 46.6'
- 748 BLOC. - 46.6'
- 749 BLOC. - 46.6'
- 750 BLOC. - 46.6'
- 751 BLOC. - 46.6'
- 752 BLOC. - 46.6'
- 753 BLOC. - 46.6'
- 754 BLOC. - 46.6'
- 755 BLOC. - 46.6'
- 756 BLOC. - 46.6'
- 757 BLOC. - 46.6'
- 758 BLOC. - 46.6'
- 759 BLOC. - 46.6'
- 760 BLOC. - 46.6'
- 761 BLOC. - 46.6'
- 762 BLOC. - 46.6'
- 763 BLOC. - 46.6'
- 764 BLOC. - 46.6'
- 765 BLOC. - 46.6'
- 766 BLOC. - 46.6'
- 767 BLOC. - 46.6'
- 768 BLOC. - 46.6'
- 769 BLOC. - 46.6'
- 770 BLOC. - 46.6'
- 771 BLOC. - 46.6'
- 772 BLOC. - 46.6'
- 773 BLOC. - 46.6'
- 774 BLOC. - 46.6'
- 775 BLOC. - 46.6'
- 776 BLOC. - 46.6'
- 777 BLOC. - 46.6'
- 778 BLOC. - 46.6'
- 779 BLOC. - 46.6'
- 780 BLOC. - 46.6'
- 781 BLOC. - 46.6'
- 782 BLOC. - 46.6'
- 783 BLOC. - 46.6'
- 784 BLOC. - 46.6'
- 785 BLOC. - 46.6'
- 786 BLOC. - 46.6'
- 787 BLOC. - 46.6'
- 788 BLOC. - 46.6'
- 789 BLOC. - 46.6'
- 790 BLOC. - 46.6'
- 791 BLOC. - 46.6'
- 792 BLOC. - 46.6'
- 793 BLOC. - 46.6'
- 794 BLOC. - 46.6'
- 795 BLOC. - 46.6'
- 796 BLOC. - 46.6'
- 797 BLOC. - 46.6'
- 798 BLOC. - 46.6'
- 799 BLOC. - 46.6'
- 800 BLOC. - 46.6'
- 801 BLOC. - 46.6'
- 802 BLOC. - 46.6'
- 803 BLOC. - 46.6'
- 804 BLOC. - 46.6'
- 805 BLOC. - 46.6'
- 806 BLOC. - 46.6'
- 807 BLOC. - 46.6'
- 808 BLOC. - 46.6'
- 809 BLOC. - 46.6'
- 810 BLOC. - 46.6'
- 811 BLOC. - 46.6'
- 812 BLOC. - 46.6'
- 813 BLOC. - 46.6'
- 814 BLOC. - 46.6'
- 815 BLOC. - 46.6'
- 816 BLOC. - 46.6'
- 817 BLOC. - 46.6'
- 818 BLOC. - 46.6'
- 819 BLOC. - 46.6'
- 820 BLOC. - 46.6'
- 821 BLOC. - 46.6'
- 822 BLOC. - 46.6'
- 823 BLOC. - 46.6'
- 824 BLOC. - 46.6'
- 825 BLOC. - 46.6'
- 826 BLOC. - 46.6'
- 827 BLOC. - 46.6'
- 828 BLOC. - 46.6'
- 829 BLOC. - 46.6'
- 830 BLOC. - 46.6'
- 831 BLOC. - 46.6'
- 832 BLOC. - 46.6'
- 833 BLOC. - 46.6'
- 834 BLOC. - 46.6'
- 835 BLOC. - 46.6'
- 836 BLOC. - 46.6'
- 837 BLOC. - 46.6'
- 838 BLOC. - 46.6'
- 839 BLOC. - 46.6'
- 840 BLOC. - 46.6'
- 841 BLOC. - 46.6'
- 842 BLOC. - 46.6'
- 843 BLOC. - 46.6'
- 844 BLOC. - 46.6'
- 845 BLOC. - 46.6'
- 846 BLOC. - 46.6'
- 847 BLOC. - 46.6'
- 848 BLOC. - 46.6'
- 849 BLOC. - 46.6'
- 850 BLOC. - 46.6'
- 851 BLOC. - 46.6'
- 852 BLOC. - 46.6'
- 853 BLOC. - 46.6'
- 854 BLOC. - 46.6'
- 855 BLOC. - 46.6'
- 856 BLOC. - 46.6'
- 857 BLOC. - 46.6'
- 858 BLOC. - 46.6'
- 859 BLOC. - 46.6'
- 860 BLOC. - 46.6'
- 861 BLOC. - 46.6'
- 862 BLOC. - 46.6'
- 863 BLOC. - 46.6'
- 864 BLOC. - 46.6'
- 865 BLOC. - 46.6'
- 866 BLOC. - 46.6'
- 867 BLOC. - 46.6'
- 868 BLOC. - 46.6'
- 869 BLOC. - 46.6'
- 870 BLOC. - 46.6'
- 871 BLOC. - 46.6'
- 872 BLOC. - 46.6'
- 873 BLOC. - 46.6'
- 874 BLOC. - 46.6'
- 875 BLOC. - 46.6'
- 876 BLOC. - 46.6'
- 877 BLOC. - 46.6'
- 878 BLOC. - 46.6'
- 879 BLOC. - 46.6'
- 880 BLOC. - 46.6'
- 881 BLOC. - 46.6'
- 882 BLOC. - 46.6'
- 883 BLOC. - 46.6'
- 884 BLOC. - 46.6'
- 885 BLOC. - 46.6'
- 886 BLOC. - 46.6'
- 887 BLOC. - 46.6'
- 888 BLOC. - 46.6'
- 889 BLOC. - 46.6'
- 890 BLOC. - 46.6'
- 891 BLOC. - 46.6'
- 892 BLOC. - 46.6'
- 893 BLOC. - 46.6'
- 894 BLOC. - 46.6'
- 895 BLOC. - 46.6'
- 896 BLOC. - 46.6'
- 897 BLOC. - 46.6'
- 898 BLOC. - 46.6'
- 899 BLOC. - 46.6'
- 900 BLOC. - 46.6'
- 901 BLOC. - 46.6'
- 902 BLOC. - 46.6'
- 903 BLOC. - 46.6'
- 904 BLOC. - 46.6'
- 905 BLOC. - 46.6'
- 906 BLOC. - 46.6'
- 907 BLOC. - 46.6'
- 908 BLOC. - 46.6'
- 909 BLOC. - 46.6'
- 910 BLOC. - 46.6'
- 911 BLOC. - 46.6'
- 912 BLOC. - 46.6'
- 913 BLOC. - 46.6'
- 914 BLOC. - 46.6'
- 915 BLOC. - 46.6'
- 916 BLOC. - 46.6'
- 917 BLOC. - 46.6'
- 918 BLOC. - 46.6'
- 919 BLOC. - 46.6'
- 920 BLOC. - 46.6'
- 921 BLOC. - 46.6'
- 922 BLOC. - 46.6'
- 923 BLOC. - 46.6'
- 924 BLOC. - 46.6'
- 925 BLOC. - 46.6'
- 926 BLOC. - 46.6'
- 927 BLOC. - 46.6'
- 928 BLOC. - 46.6'
- 929 BLOC. - 46.6'
- 930 BLOC. - 46.6'
- 931 BLOC. - 46.6'
- 932 BLOC. - 46.6'
- 933 BLOC. - 46.6'
- 934 BLOC. - 46.6'
- 935 BLOC. - 46.6'
- 936 BLOC. - 46.6'
- 937 BLOC. - 46.6'
- 938 BLOC. - 46.6'
- 939 BLOC. - 46.6'
- 940 BLOC. - 46.6'
- 941 BLOC. - 46.6'
- 942 BLOC. - 46.6'
- 943 BLOC. - 46.6'
- 944 BLOC. - 46.6'
- 945 BLOC. - 46.6'
- 946 BLOC. - 46.6'
- 947 BLOC. - 46.6'
- 948 BLOC. - 46.6'
- 949 BLOC. - 46.6'
- 950 BLOC. - 46.6'
- 951 BLOC. - 46.6'
- 952 BLOC. - 46.6'
- 953 BLOC. - 46.6'
- 954 BLOC. - 46.6'
- 955 BLOC. - 46.6'
- 956 BLOC. - 46.6'
- 957 BLOC. - 46.6'
- 958 BLOC. - 46.6'
- 959 BLOC. - 46.6'
- 960 BLOC. - 46.6'
- 961 BLOC. - 46.6'
- 962 BLOC. - 46.6'
- 963 BLOC. - 46.6'
- 964 BLOC. - 46.6'
- 965 BLOC. - 46.6'
- 966 BLOC. - 46.6'
- 967 BLOC. - 46.6'
- 968 BLOC. - 46.6'
- 969 BLOC. - 46.6'
- 970 BLOC. - 46.6'
- 971 BLOC. - 46.6'
- 972 BLOC. - 46.6'
- 973 BLOC. - 46.6'
- 974 BLOC. - 46.6'
- 975 BLOC. - 46.6'
- 976 BLOC. - 46.6'
- 977 BLOC. - 46.6'
- 978 BLOC. - 46.6'
- 979 BLOC. - 46.6'
- 980 BLOC. - 46.6'
- 981 BLOC. - 46.6'
- 982 BLOC. - 46.6'
- 983 BLOC. - 46.6'
- 984 BLOC. - 46.6'
- 985 BLOC. - 46.6'
- 986 BLOC. - 46.6'
- 987 BLOC. - 46.6'
- 988 BLOC. - 46.6'
- 989 BLOC. - 46.6'
- 990 BLOC. - 46.6'
- 991 BLOC. - 46.6'
- 992 BLOC. - 46.6'
- 993 BLOC. - 46.6'
- 994 BLOC. - 46.6'
- 995 BLOC. - 46.6'
- 996 BLOC. - 46.6'
- 997 BLOC. - 46.6'
- 998 BLOC. - 46.6'
- 999 BLOC. - 46.6'
- 1000 BLOC. - 46.6'



- 47+29 CHIPPED IRON EXCEL NOZ - 34.7'
- 73 C.P. TEMP. - 26.0'
- 78 CHIPPED IRON MESHPHORE - 34.7'
- 89 SAN (STREET) - 33.7'
- 48+29 SON (STIP) - 36.1'
- 49 GAS - 30.3'
- 44 PIPE NOZ - 34.7'
- 46 GAS - 32.0'
- 46 GAS - 31.5'
- 46 GAS - 31.5'
- 46 GAS - 2.7'
- 46 GAS - 31.7'
- 49+08 PIPE - 35.0'
- 45 60" STAMP - 38.6'
- 41 GAS - 31.0'
- 49 2" BLOC. - 33.7'
- 47 GAS - 29.3'
- 49 PIPE - 33.8'
- 49 PIPE - 34.7'
- 50+08 60" WIRE - 33.7'
- 42 48" BLOC. - 33.7'
- 78 GAS VALVE - 26.6'
- 49 3" OAK - 40.5'
- 51+12 3" OAK - 36.9'
- 49 GAS - 30.8'
- 49 GAS - 30.8'
- 427 FENCE - 41.7'
- 450 3" BLOC. - 34.8'
- 451 3" BLOC. - 35.3'
- 451 3" BLOC. - 35.3'
- 450 3" BLOC. - 34.6'
- 451 3" BLOC. - 34.9'
- 451 3" BLOC. - 30.9'
- 450 GAS VALVE - 34.1'
- 450 FENCE - 41.8'
- 450 FENCE - 41.8'
- 49 P. POLE ON ELEC LINES - 36.7'
- 448 SON (STIP) - 35.8'
- 449 HYDRANT - 41.5'
- 449 IRON REPAIR INSIDE 2" PIPE - 34.2'
- 53+78 PIPE - 34.7'
- 47 P. POLE ON ELEC LINES - 27.6'
- 54+45 WATER SHUT OFF - 33.3'
- 48 66" OAK - 37.1'

- CURB RAMP NOTES**
- PROPOSED SIDEWALK INFILL: CURB RAMP AND DRIVEWAYS ALONG SANFORD STREET WERE CONSTRUCTED AS PART OF THE ROAD RECONSTRUCTION. ITEMS HERE ARE TO BE FILLED IN TO FOOT CONCRETE BETWEEN RAMP AND DRIVEWAYS. CURB RAMP WITH QUANTITIES STILL NEED TO BE CONSTRUCTED. CURB RAMP ALONG TERRACE NEED TO BE DESIGNED IN THE FIELD.
- SOIL EROSION CONTROL LEGEND**
- PROPOSED EROSION CONTROL, INLET PROTECTION, FABRIC DROP
- REMOVAL LEGEND**
- REMOVE CONCRETE SIDEWALK PAID FOR AS: SIDEWALK, REM
 - REMOVE CURB, GUTTER OR CURB AND GUTTER, PAID FOR AS: CURB AND GUTTER, REM
 - TREE REMOVAL



NO.	REVISIONS	BY	DATE	DRAWN
				STAFF
				DATE
				CHECKED
				M.R.H.

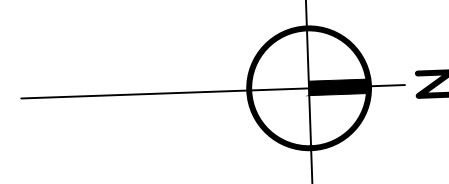
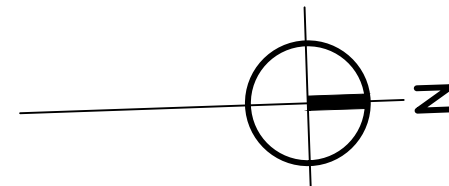
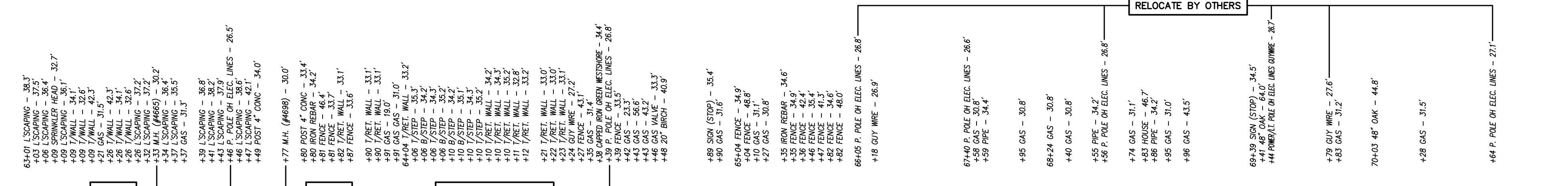
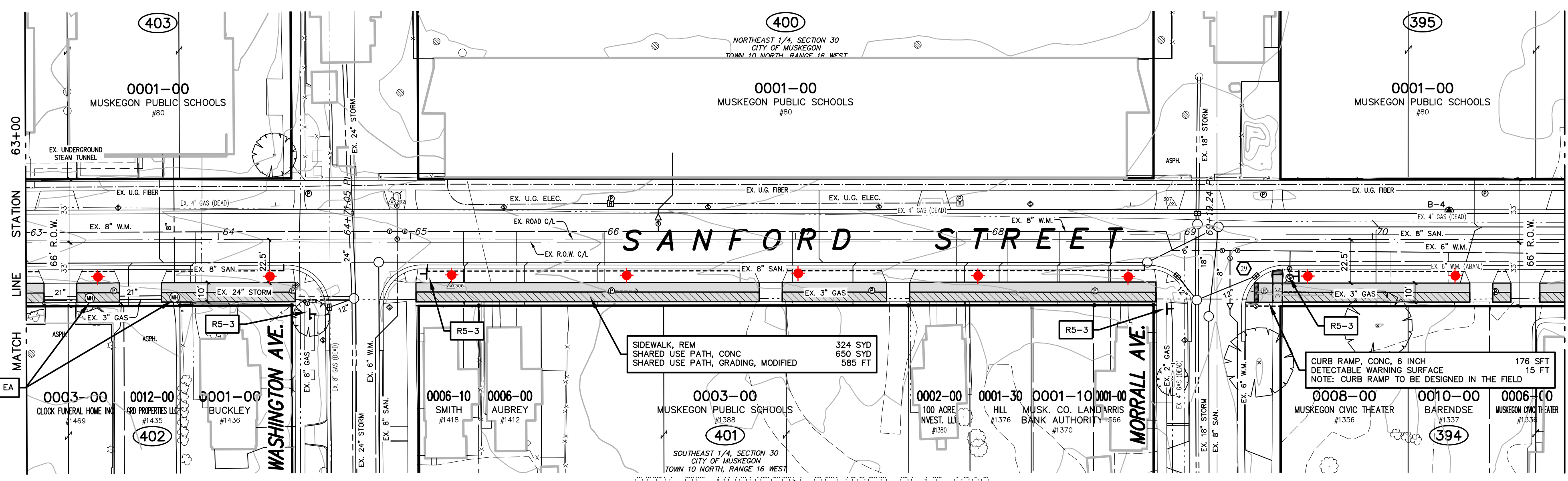
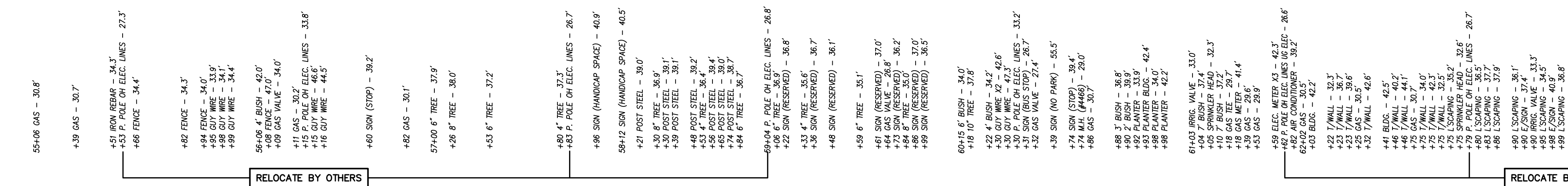
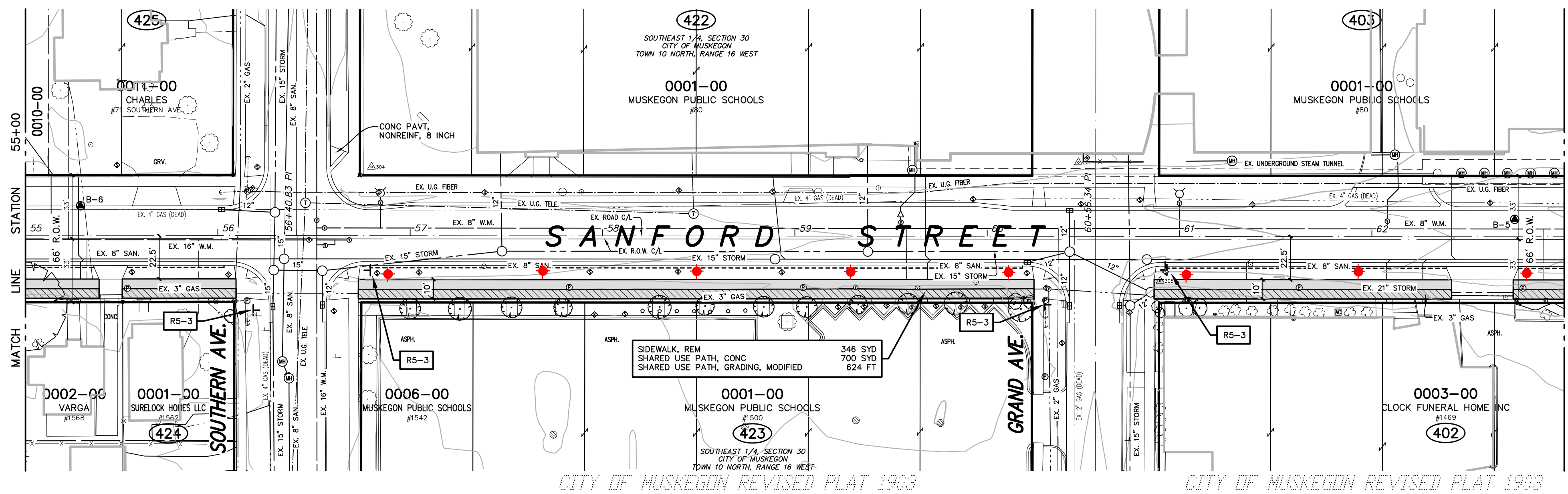
B.M. EL. 627.32
SANFORD STREET & SOUTHERN AVENUE,
25'± S & 20'± W OF C/L "X", RR SPIKE IN
E SIDE P. POLE

B.M. EL. 627.91
SANFORD STREET & GRAND AVENUE, 5'± S
& 40'± W OF C/L "X", TOP OF SE COR.
CONC. RET. WALL FOR RAMP ON E SIDE
SCHOOL (1.8' A/GROUND)

B.M. EL. 622.78
SANFORD STREET & WASHINGTON AVENUE,
30'± S & 25'± E OF C/L "X", RR SPIKE IN
W SIDE P. POLE

CONTROL POINT TABLE			
POINT No.	NORTHING	EASTING	ELEVATION
201	634355.294	12822602.810	626.14
304	633987.954	12822592.360	626.50
305	634305.642	12822665.810	625.63

CONTROL POINT TABLE			
POINT No.	NORTHING	EASTING	ELEVATION
202	634797.329	12822637.580	625.10
306	634826.103	12822682.420	621.14
307	635022.759	12822654.300	616.94



CURB RAMP NOTES
PROPOSED SIDEWALK INFILL:
CURB RAMP AND DRIVEWAYS ALONG SANFORD
STREET WERE CONSTRUCTED AS PART OF THE
ROAD RECONSTRUCTION. ITEMS HERE ARE TO
FILL IN 10 FOOT CONCRETE BETWEEN RAMP AND
DRIVEWAYS. CURB RAMP WITH QUANTITIES STILL
NEED TO BE CONSTRUCTED. CURB RAMP ALONG
TERRACE NEED TO BE DESIGNED IN THE FIELD.

SOIL EROSION CONTROL LEGEND
PROPOSED EROSION CONTROL, INLET PROTECTION, FABRIC DROP

REMOVAL LEGEND
REMOVE CONCRETE SIDEWALK PAID FOR AS: SIDEWALK, REM
REMOVE CURB, GUTTER OR CURB AND GUTTER, PAID FOR AS: CURB AND GUTTER, REM
TREE REMOVAL



NO.	REVISIONS	BY	DATE	DRAWN

Prein & Newhof
Engineers • Surveyors • Environmental • Laboratory

CITY OF MUSKEGON
MUSKEGON COUNTY, MICHIGAN
LAKETON SHORELINE TRAIL CONNECTOR
SANFORD STREET

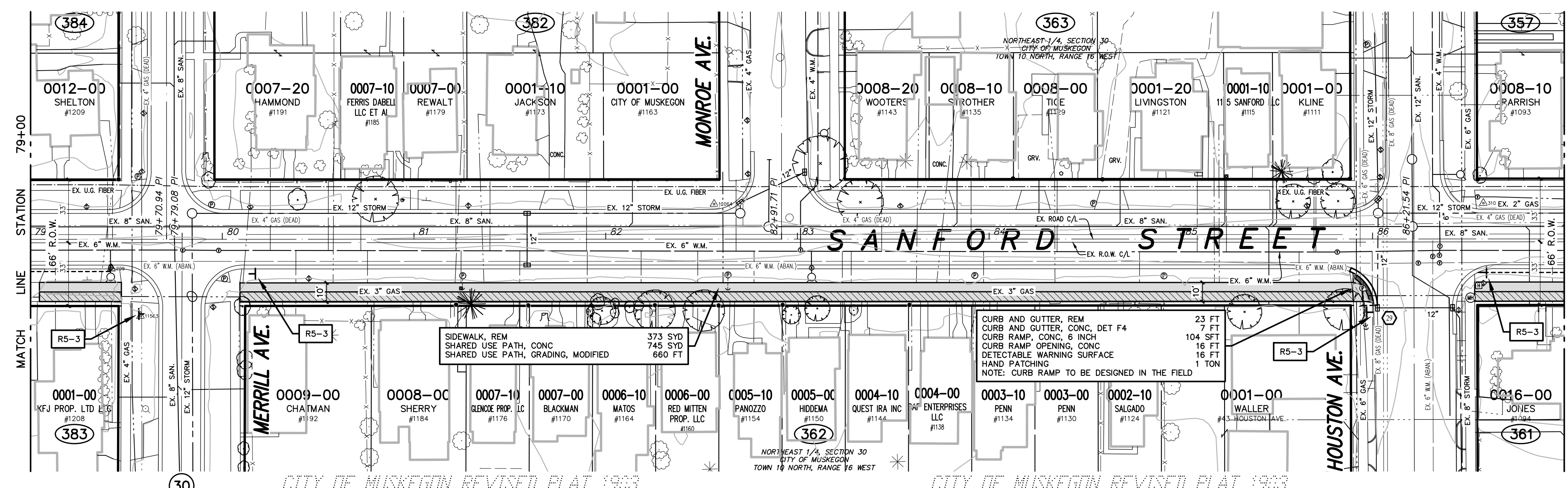
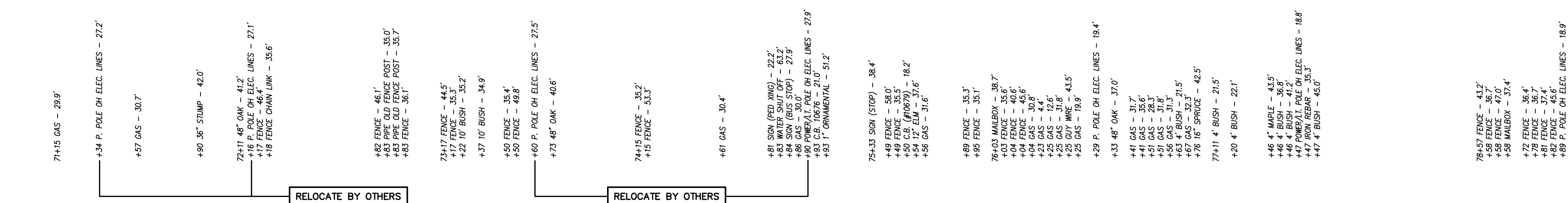
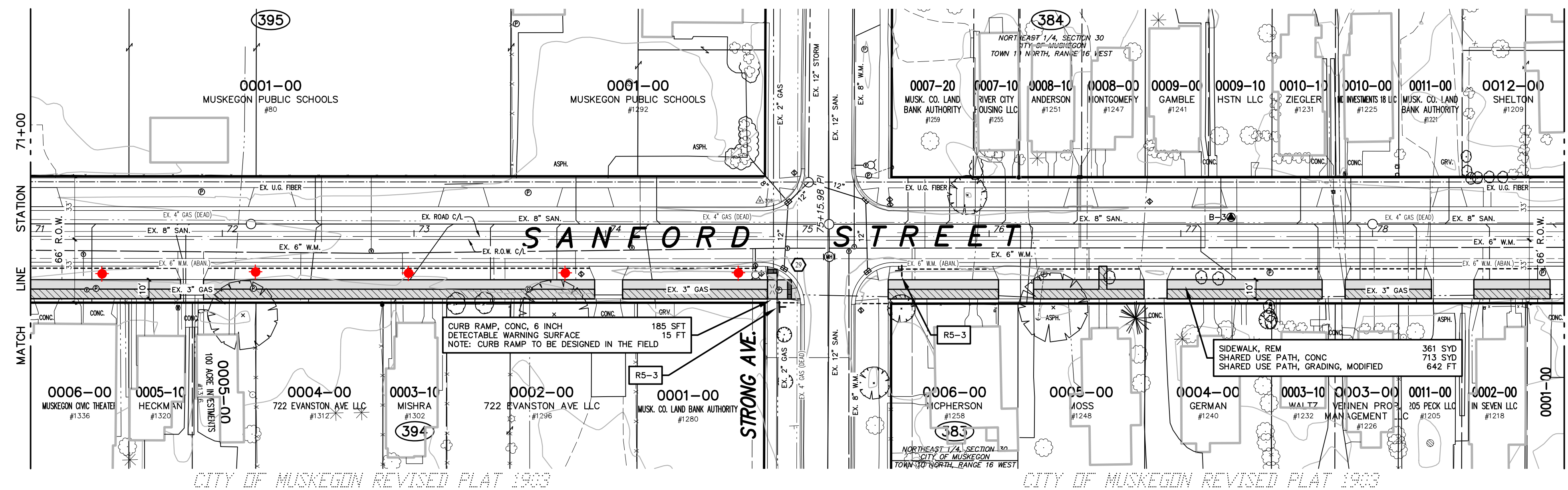
PROJECT NO.
2220254
SHEET NO.
4 OF 9

T:\CADD\PROJECTS\2023\2220254_MUSKEGON_TERMINAL_TERRACE\MPA_PROD\2220254_SANFORD.DWG - NBRANER - Oct. 13, 2023 - 01:37pm - Print/Plot/Check

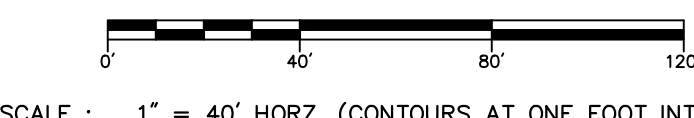
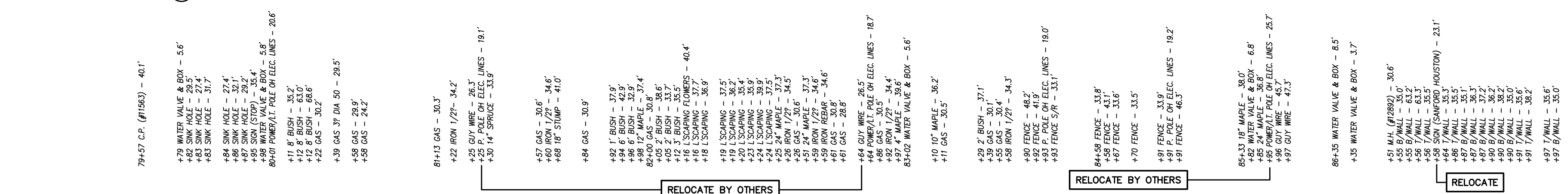
811
UTILITY LOCATIONS ARE DERIVED FROM ACTUAL MEASUREMENTS OR AVAILABLE RECORDS. THEY SHOULD NOT BE INTERPRETED TO BE EXACT LOCATIONS NOR SHOULD IT BE ASSUMED THAT THEY ARE THE ONLY UTILITIES IN THIS AREA.
Know what's below. Call before you dig.

CONTROL POINT TABLE			
POINT No.	NORTHING	EASTING	ELEVATION
308	635786.643	1262277.130	615.41

CONTROL POINT TABLE			
POINT No.	NORTHING	EASTING	ELEVATION
309	636246.820	12622728.050	615.63
310	636963.102	12622722.770	616.19
11683	636260.994	12622774.440	616.44
12084	636562.130	12622707.630	615.81



- CURB RAMP NOTES**
- PROPOSED SIDEWALK INFILL, CURB RAMP AND DRIVEWAYS ALONG SANFORD STREET WERE CONSTRUCTED AS PART OF THE ROAD RECONSTRUCTION. ITEMS HERE ARE TO BE REMOVED TO BE REPLACED WITH 10 FOOT CONCRETE BETWEEN RAMP AND DRIVEWAYS. CURB RAMP WITH QUANTITIES STILL NEED TO BE CONSTRUCTED. CURB RAMP ALONG TERRACE NEED TO BE DESIGNED IN THE FIELD.
- SOIL EROSION CONTROL LEGEND**
- PROPOSED EROSION CONTROL, INLET PROTECTION, FABRIC DROP
- REMOVAL LEGEND**
- REMOVE CONCRETE SIDEWALK PAID FOR AS: SIDEWALK, REM
 - REMOVE CURB, GUTTER OR CURB AND GUTTER, PAID FOR AS: CURB AND GUTTER, REM
 - TREE REMOVAL



NO.	REVISIONS	BY	DATE	DRAWN
				STAFF
				DATE
				CHECKED
				M.R.H.
				DATE
				JULY '25

CITY OF MUSKEGON
MUSKEGON COUNTY, MICHIGAN

LAKETON SHORELINE TRAIL CONNECTOR

SANFORD STREET

PROJECT NO.
2220254

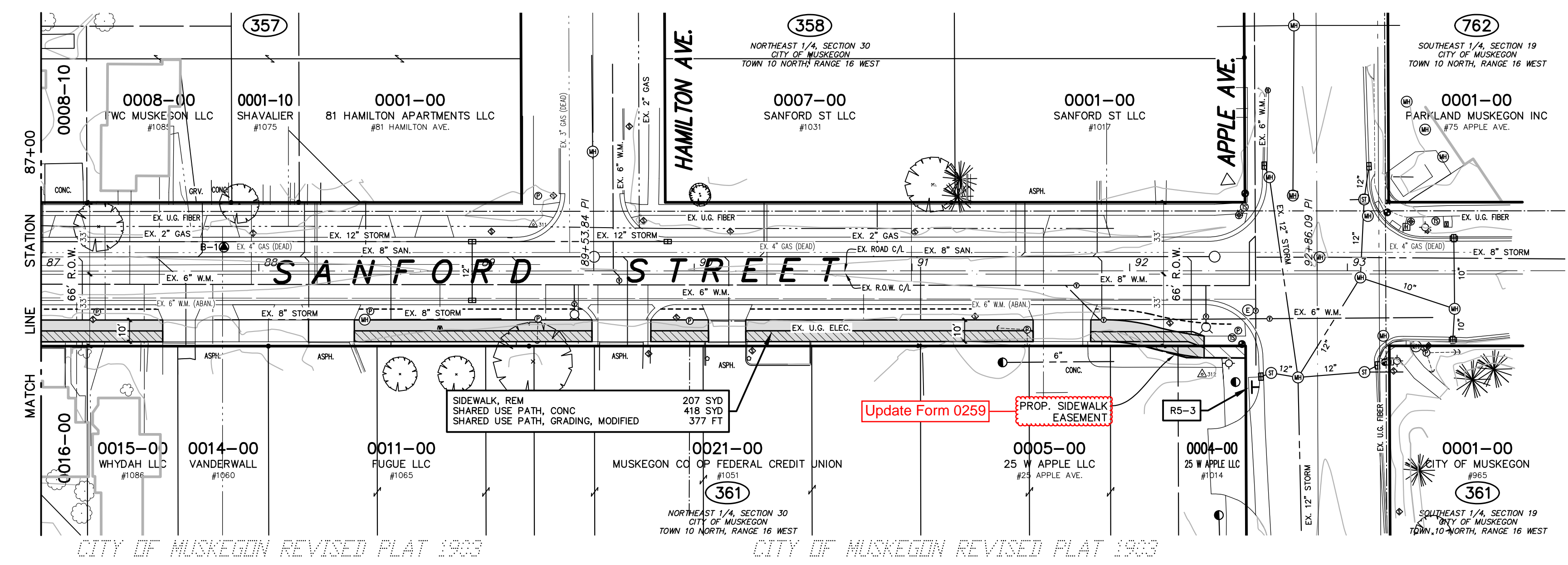
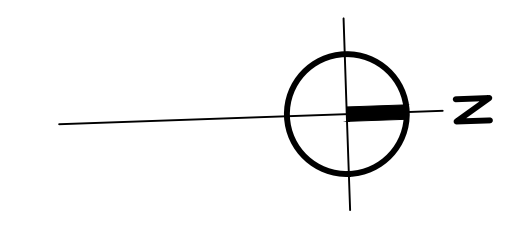
SHEET NO.
5 OF 9

T:\LOCAL PROJECTS\2025\2220254_SANFORD_STREET_MUSKEGON_TERRACE\MP\PROJ\2220254_SANFORD.DWG - NSRAME - Oct 13 2025 - 01:37pm - Print/Plot/Check

UTILITY LOCATIONS ARE DERIVED FROM ACTUAL MEASUREMENTS OR AVAILABLE RECORDS. THEY SHOULD NOT BE INTERPRETED TO BE EXACT LOCATIONS NOR SHOULD IT BE ASSUMED THAT THEY ARE THE ONLY UTILITIES IN THIS AREA.

B.M. EL. 617.62
 SANFORD STREET & APPLE AVENUE, 35'±
 S & 25'± W OF C/L "X", TOP OF SOUTH
 FLANGE BOLT ON STRAIN POLE

CONTROL POINT TABLE			
POINT No.	NORTHING	EASTING	ELEVATION
112	837535.605	1262281.220	617.06
311	837231.340	12622730.600	615.85
312	837535.605	1262281.220	617.00



CURB RAMP NOTES

PROPOSED SIDEWALK INFILL CURB RAMP AND DRIVEWAYS ALONG SANFORD STREET WERE CONSTRUCTED AS PART OF THE ROAD RECONSTRUCTION. ITEMS HERE ARE TO BE FILLED IN 10 FOOT CONCRETE BETWEEN RAMP AND DRIVEWAYS. CURB RAMP WITH QUANTITIES STILL NEED TO BE CONSTRUCTED. CURB RAMP ALONG TERRACE NEED TO BE DESIGNED IN THE FIELD.

SOIL EROSION CONTROL LEGEND

PROPOSED EROSION CONTROL, INLET PROTECTION, FABRIC DROP

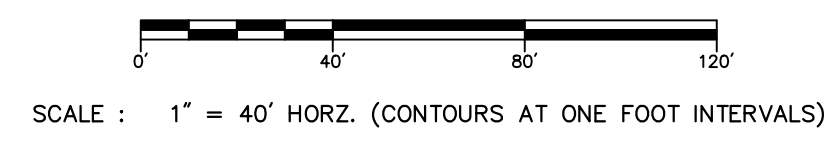
REMOVAL LEGEND

REMOVE CONCRETE SIDEWALK PAID FOR AS: SIDEWALK, REM
 REMOVE CURB, GUTTER OR CURB AND GUTTER, PAID FOR AS: CURB AND GUTTER, REM
 TREE REMOVAL

- 87+11 T/WALL - 35.5'
- 111 T/WALL - 42.4'
- 114 B/WALL - 35.0'
- 114 B/WALL - 35.1'
- 121 T/WALL - 35.5'
- 121 T/WALL - 35.5'
- 121 B/WALL - 35.5'
- 121 B/WALL - 35.5'
- 121 B/WALL - 43.6'
- 128 P. POLE ON ELEC. LINES - 18.5'
- 128 GAS - 32.2'
- 88+04 IRON REBAR - 34.5'
- 151 P. POLE ON ELEC. LINES - 18.5'
- 165 14" MAREE - 47.4'
- 191 18" MAREE - 47.5'
- 89+24 CURVED IRON RIS 19887 - 34.5'
- 128 GUY WIRE - 33.2'
- 128 P. POLE ON ELEC. LINES - 22.0'
- 166 WATER VALVE & BOX - 4.4'
- 179 SIGN - 38.0'
- 185 SIGN - 21.4'
- 186 P. POLE - 23.9'
- 90+06 POST - 40.3'
- 125 POST - 40.2'
- 127 SIGN - 36.7'
- RELOCATE BY OTHERS
- 91+03 FOUND NOTCH (X-CUT) - 34.4'
- 129 SIGN - 20.9'
- 139 GUY WIRE - 28.2'
- 142 C.B. (A15265) - 42.1'
- 153 P. POLE - 27.0'
- 153 GUY WIRE - 34.6'
- 92+12 RIGHT ARROW - 15.9'
- 118 SIGN - 23.9'
- 146 LIGHT BASE - 42.5'
- 147 TRAFFIC SIGNAL M.H. 10266 - 30.7'
- 150 P. POLE - 31.7'
- 150 P. POLE - 21.4'
- 154 ELEC. M.H. - 16.1'
- 160 C.B. (A1518) - 46.6'
- 165 M.H. (A15455) - 46.9'
- 177 M.H. (A15504) - 49.0'
- 93+08 M.H. (A15003) - 31.1'
- 108 M.H. (A15402) - 46.5'
- 116 M.H. (A15386) - 29.9'
- 117 FED. SIGNAL - 42.0'
- 121 SIGN - 46.0'
- 121 SIGN - 41.7'
- 131 M.H. (A15340) - 41.34.7'
- 135 SIGN - 35.6'
- 137 SIGN - 34.7'
- 137 SIGN - 34.7'
- 139 GUY WIRE - 46.5'
- 148 M.H. (A15365) - 17.5'
- 153 GUY WIRE - 32.4'
- 157 18" P.W.E. - 50.0'
- 167 18" P.W.E. - 45.5'

T:\O\A\PROJECTS\2023\2220254_MUSKEGON_TERRACE\MP\A_P\001\2220254_SANFORD.DWG - NSRANER - Oct. 13, 2025 - 01:30pm - Print/Plot/Check

811
 UTILITY LOCATIONS ARE DERIVED FROM ACTUAL MEASUREMENTS OR AVAILABLE RECORDS. THEY SHOULD NOT BE INTERPRETED TO BE EXACT LOCATIONS NOR SHOULD IT BE ASSUMED THAT THEY ARE THE ONLY UTILITIES IN THIS AREA.
 Know what's below. Call before you dig.



NO.	REVISIONS	BY	DATE	DRAWN
				STAFF
				DATE
				JULY '25
				CHECKED
				M.R.H.
				DATE
				JULY '25

	CITY OF MUSKEGON MUSKEGON COUNTY, MICHIGAN		PROJECT NO. 2220254
	LAKETON SHORELINE TRAIL CONNECTOR		SHEET NO. 6 OF 9
	SANFORD STREET		

B.M. EL. 617.61
SANFORD STREET & APPLE AVENUE, SW
CORNER OF INTERSECTION, TOP BOLT
SOUTH SIDE P. POLE (0.3' A/GROUND)

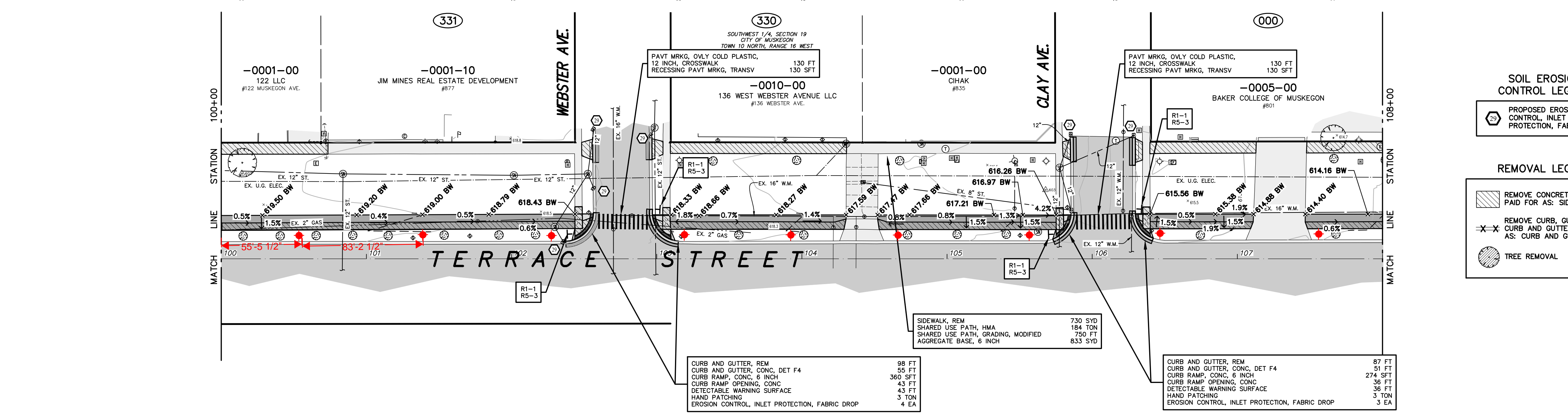
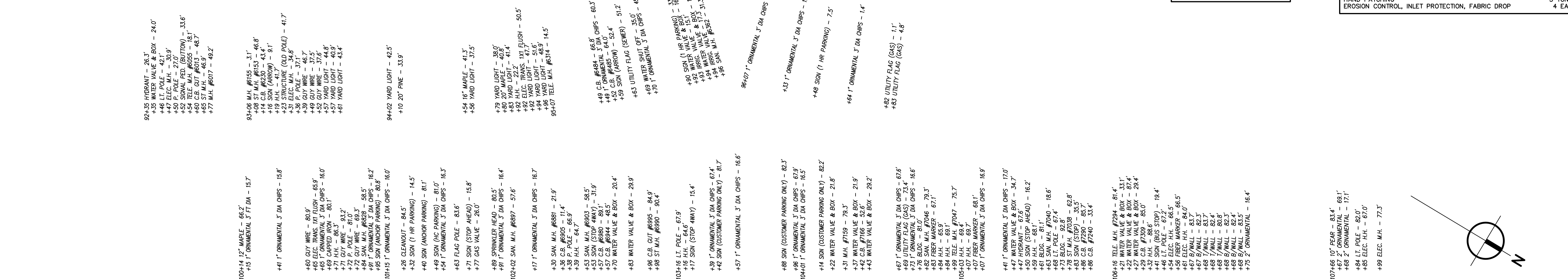
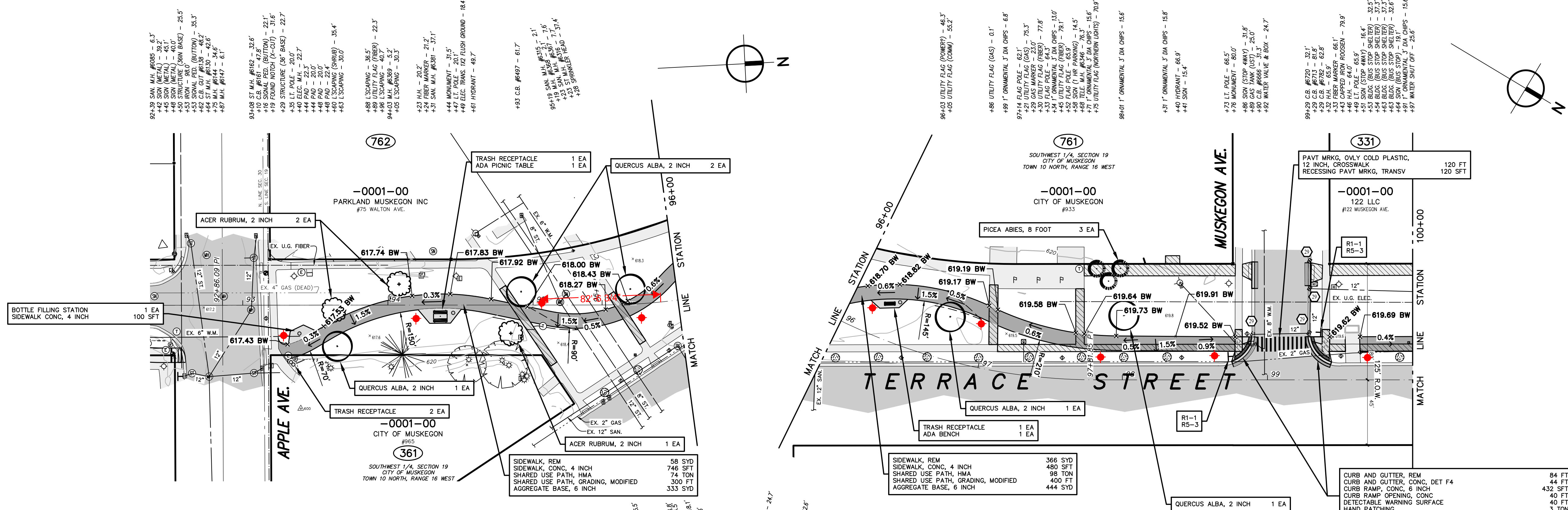
B.M. EL. 619.63
SANFORD STREET & APPLE AVENUE, 175'±
N & 50'± W OF C/L "X", HYDRANT BOLT
UNDER "E" IN E.W.

B.M. EL. 620.92
TERRACE STREET & MUSKEGON AVENUE,
SW CORNER OF INTERSECTION, HYDRANT
FLANGE BOLT UNDER "E" IN E.W.

B.M. EL. 617.97
TERRACE STREET & CLAY AVENUE, SW
CORNER OF INTERSECTION, HYDRANT
FLANGE BOLT UNDER "E" IN E.W.

CONTROL POINT TABLE		
POINT No.	NORTHING	EASTING ELEVATION
600	637641.28	12622839.08 620.55
601	637668.85	12622770.35 618.48

CONTROL POINT TABLE		
POINT No.	NORTHING	EASTING ELEVATION
602	638242.90	12622546.70 619.33
603	638721.66	12622268.34 616.55



- SOIL EROSION CONTROL LEGEND**
- PROPOSED EROSION CONTROL, INLET PROTECTION, FABRIC DROP
- REMOVAL LEGEND**
- REMOVE CONCRETE SIDEWALK PAID FOR AS: SIDEWALK, REM
- REMOVE CURB, GUTTER OR PAID FOR AS: CURB AND GUTTER, REM
- TREE REMOVAL

811
UTILITY LOCATIONS ARE DERIVED FROM ACTUAL MEASUREMENTS OR AVAILABLE RECORDS. THEY SHOULD NOT BE INTERPRETED TO BE EXACT LOCATIONS NOR SHOULD IT BE ASSUMED THAT THEY ARE THE ONLY UTILITIES IN THIS AREA.

SCALE: 1" = 40' HORZ. (CONTOURS AT ONE FOOT INTERVALS)

NO.	REVISIONS	BY	DATE	DRAWN
				STAFF
				JULY '25
				M.R.H.
				JULY '25

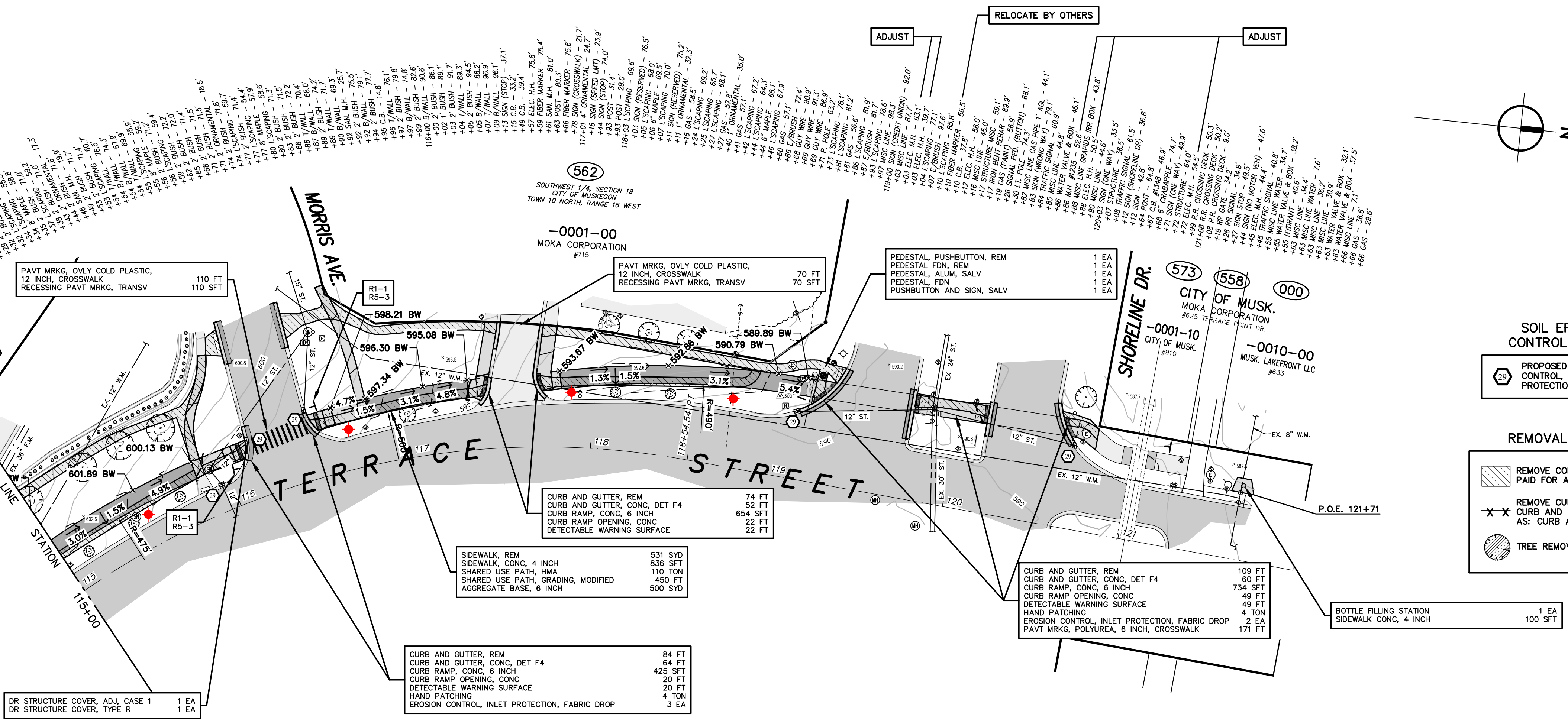
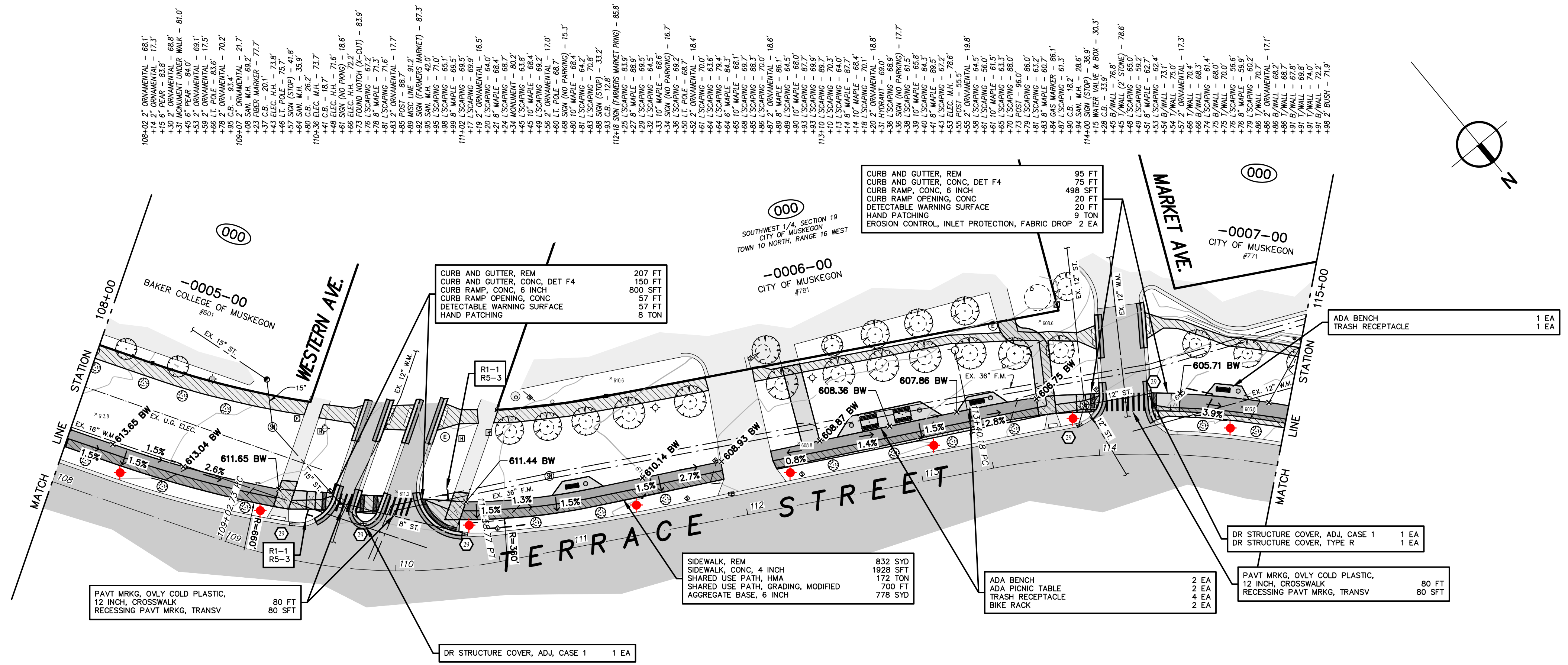
Prein & Newhof
Engineers • Surveyors • Environmental • Laboratory

CITY OF MUSKEGON
MUSKEGON COUNTY, MICHIGAN

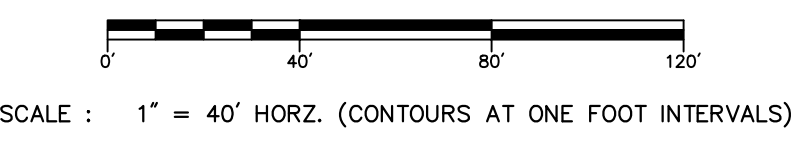
LAKETON SHORELINE TRAIL CONNECTOR
TERRACE STREET

PROJECT NO. 2220254
SHEET NO. 7 OF 9

POINT No.	NORTHING	EASTING	ELEVATION
300	639751.19	12621504.20	590.43



- SOIL EROSION CONTROL LEGEND**
- PROPOSED EROSION CONTROL, INLET PROTECTION, FABRIC DROP
- REMOVAL LEGEND**
- REMOVE CONCRETE SIDEWALK PAID FOR AS: SIDEWALK, REM
 - REMOVE CURB, GUTTER OR CURB AND GUTTER, PAID FOR AS: CURB AND GUTTER, REM
 - TREE REMOVAL



NO.	REVISIONS	BY	DATE	DRAWN
				STAFF
			JULY '25	
				M.R.H.
			JULY '25	

Prein & Newhof
 Engineers • Surveyors • Environmental • Laboratory

CITY OF MUSKEGON
 MUSKEGON COUNTY, MICHIGAN

LAKETON SHORELINE TRAIL CONNECTOR
 TERRACE STREET

PROJECT NO.
 2220254

SHEET NO.
 8 OF 9

T:\CADD\PROJECTS\2025\2220254_MUSKEGON_TERRACE\DWG - REBAR - Oct 13 2025 - 01:32pm - Print/Revised

811
 Know what's below.
 Call before you dig.

UTILITY LOCATIONS ARE DERIVED FROM ACTUAL MEASUREMENTS OR AVAILABLE RECORDS. THEY SHOULD NOT BE INTERPRETTED TO BE EXACT LOCATIONS NOR SHOULD IT BE ASSUMED THAT THEY ARE THE ONLY UTILITIES IN THIS AREA.

