

## City of Muskegon 2024 Road & Utility Construction Project Summary

**Project Name:** Millard Ave from Lake Dunes to the West End

**Project Type:** Complete reconstruction including some new storm sewers, water service lines replaced to the meter, new road and new driveways.

**Contractor:** To be determined

**City Neighborhood(s):** Beachwood-Bluffton

**Project Summary:** The pavement in Millard has reached the end of its life. In order to replace it, the entire street including the driveway approaches will need to be dug up and replaced. The project includes replacing your water service line all the way to the meter, so the contractor will need to enter your basement (or the area where your water service enters your home). You'll need to allow extra time to get to and from your home this spring and summer, and at times you may need to park on Lake Dunes and walk to your home. Your water will need to be shut off for short periods of time and you will have notice of when this will happen.

**Changes to Expect:** Millard will have new asphalt valley gutters designed to carry the water to the bottom of the hill within the road. The pavement and some parts of the driveways will be new. Some trees will need to be taken down.

**Timeline/Timeframe:** The project could start as early as March or finish as late as November but will only take about two months to complete once started. Once the contractor has identified a start date, information will be sent to the residents along the project.

**Lane, Road or Intersection Shutdown:** Millard will be open to residents only. There will be times when access (even for residents) will be very difficult, and there will be short times where access is not possible. Please exercise patience and trust that the end result will be worth the inconvenience.

**Contractor Project Update Link:** To be determined.

### Project Contact Information:

Joel Brookens  
Assistant City Engineer  
[Joel.brookens@shorelinecity.com](mailto:Joel.brookens@shorelinecity.com)

(231) 724-6900

**FAQs:**

**How will my trash get picked up?** The contractor will work with the City and Republic Waste to make sure your trash is picked up. You may have to bring your trash can to a different location than normal.

**Why does the contractor need to get inside my house?** A small portion of your water service pipe (the pipe that brings water into your home) is made of lead. The City is working to replace all water service pipes that have that small piece of lead, and the time has come for your service line to be replaced. The state requires the pipe be replaced all the way to your water meter, which is probably inside your home. The contractor will need to get to your water meter and work in that area as part of the replacement. In the meantime, your water is safe to drink. If you have any questions about this or about lead in your water, reach out to the project contacts listed above.

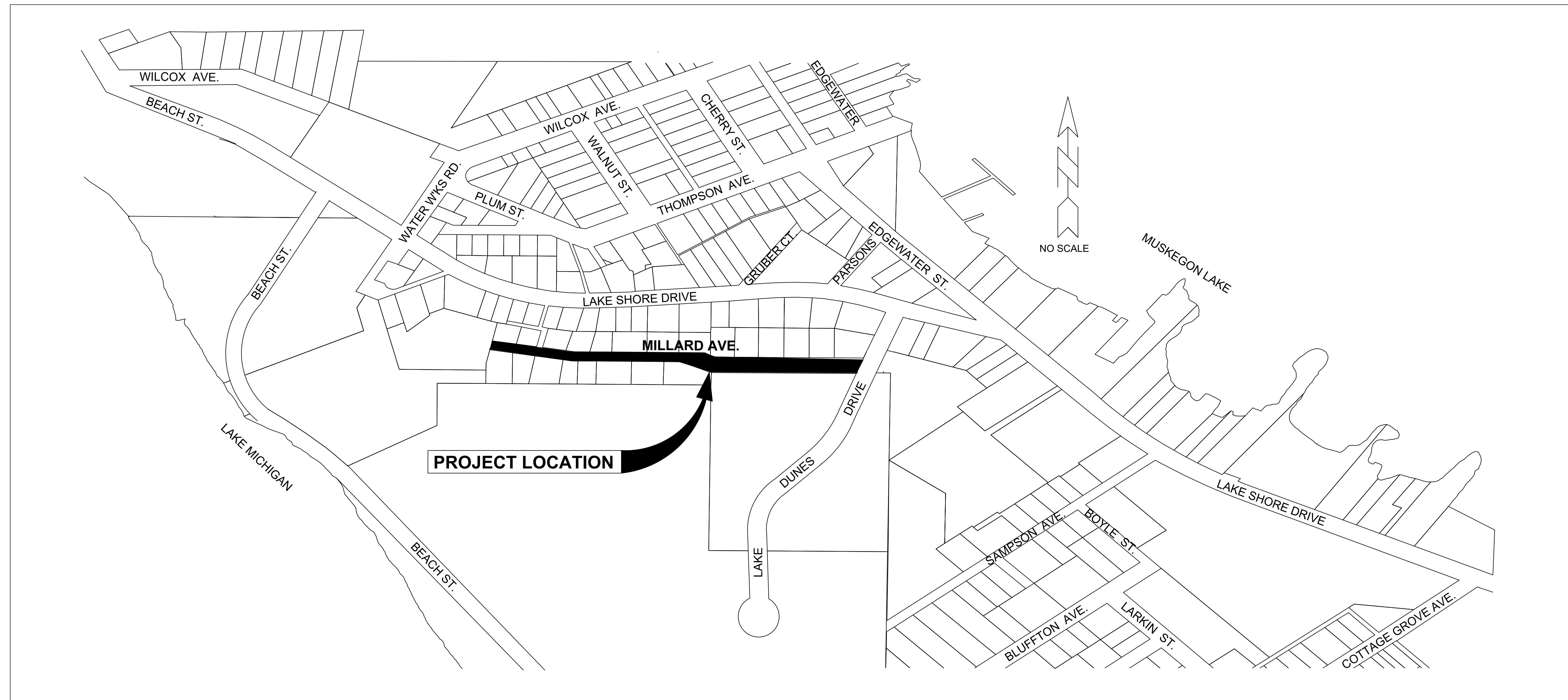
# CITY OF MUSKEGON

## MILLARD AVENUE

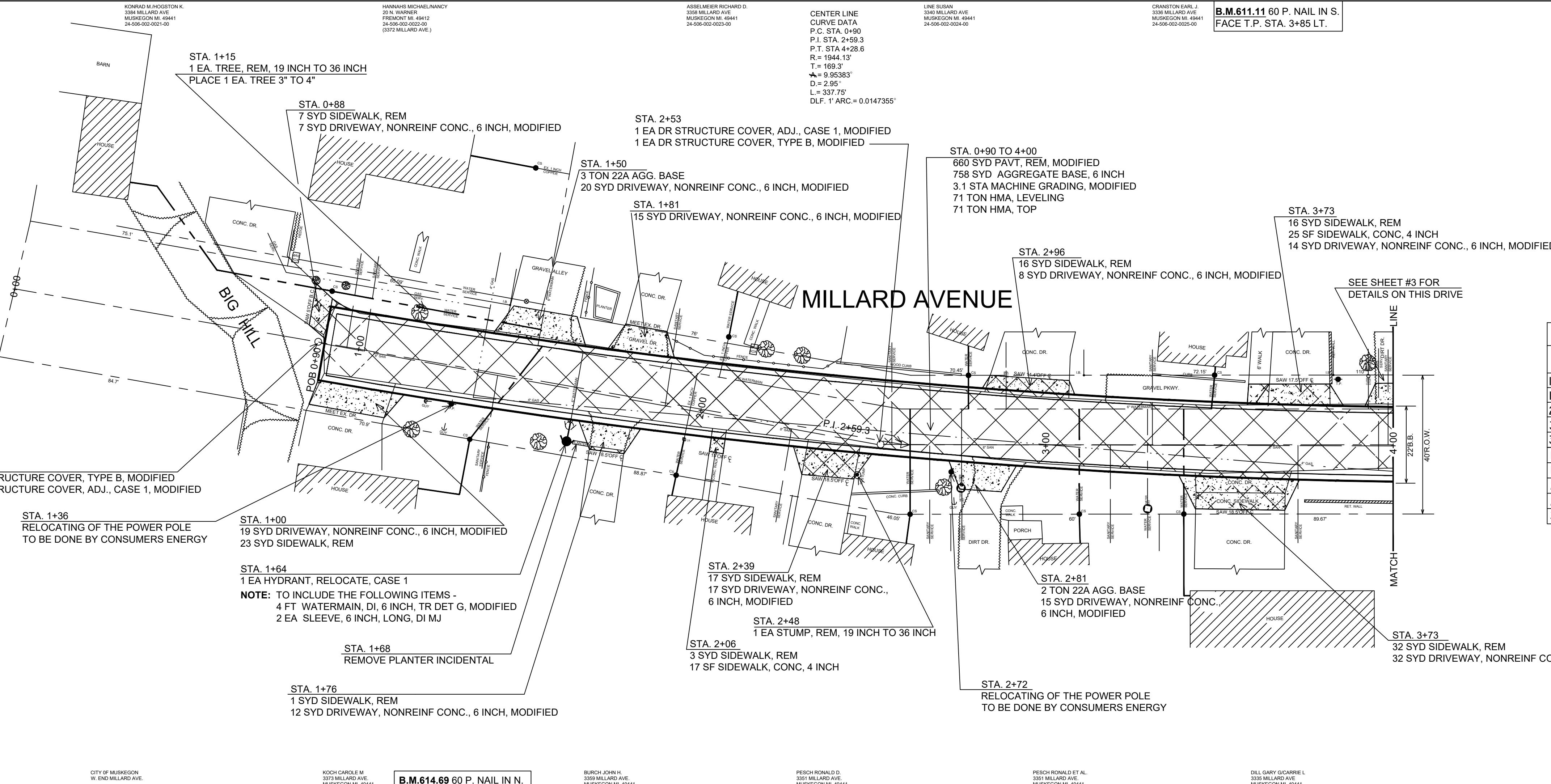
### STREET IMPROVEMENTS

### LAKE DUNES DRIVE TO 1200' WEST

### H-1520



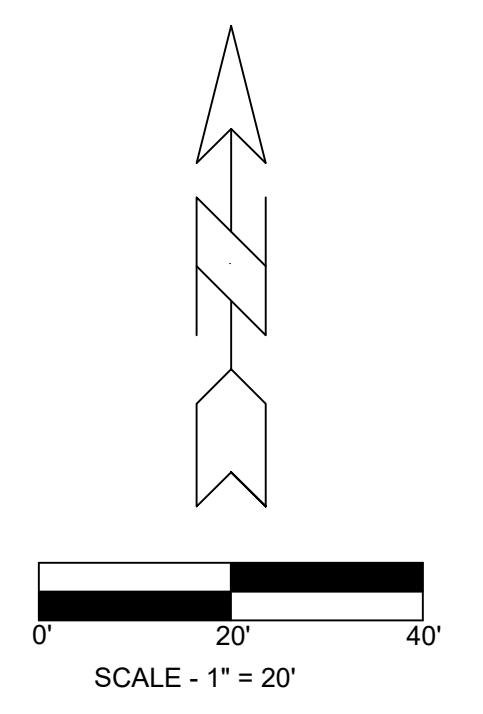
CITY OF MUSKEGON			MILLARD AVENUE		
OFFICE OF THE CITY ENGINEER			LAKE DUNE DRIVE TO 1200' WEST		
DRAWN C. SCOTT	JAN 01	REVISION C.A.S.	MAR 01	SURVEY C.W.	JULY 00
CHECKED		REVISION C.A.S.	FEB 04	AS-BUILT	PROJECT NO
APPROVED		REVISION F.P.	AUG 23	SCALE NO SCALE	SHEET NO 1 OF 4



**QUANTITIES THIS SHEET**

DR STRUCTURE COVER, ADJ. CASE 1, MODIFIED	2	EA
AGGREGATE BASE (22A AS NEEDED)	5	TON
AGGREGATE BASE, 6 INCH	758	SYD
HMA, LEVELING	71	TON
HMA, TOP	71	TON
DRIVEWAY, NONREINF CONC, 6 INCH, MODIFIED	163	SYD
SIDEWALK, CONC, 4 INCH	42	SF
CORPORATION STOP 1"	8	EA
CURB STOP 1" W / BOX	10	EA
MACHINE GRADING, MODIFIED	3.1	STA
DR STRUCTURE COVER, TYPE B, MODIFIED	2	EA
HYDRANT, RELOCATE, CASE 1	1	EA
PAVT, REM, MODIFIED	660	SYD
SIDEWALK, REM	115	SYD
TREE, REM, 19 INCH TO 36 INCH	1	EA
STUMP, REM, 19 INCH TO 36 INCH	1	EA
TREES 3" TO 4"	2	EA
WATER SERVICE 1" TYPE "K" COPPER	218	FT
WATER VALVE BOX & COVER COMPLETE	1	EA
WATER SERVICE, PRIVATE PROPERTY, 1 INCH	200	FT
WATER SERVICE, BUILDING CONNECTION, 1 INCH	10	EA

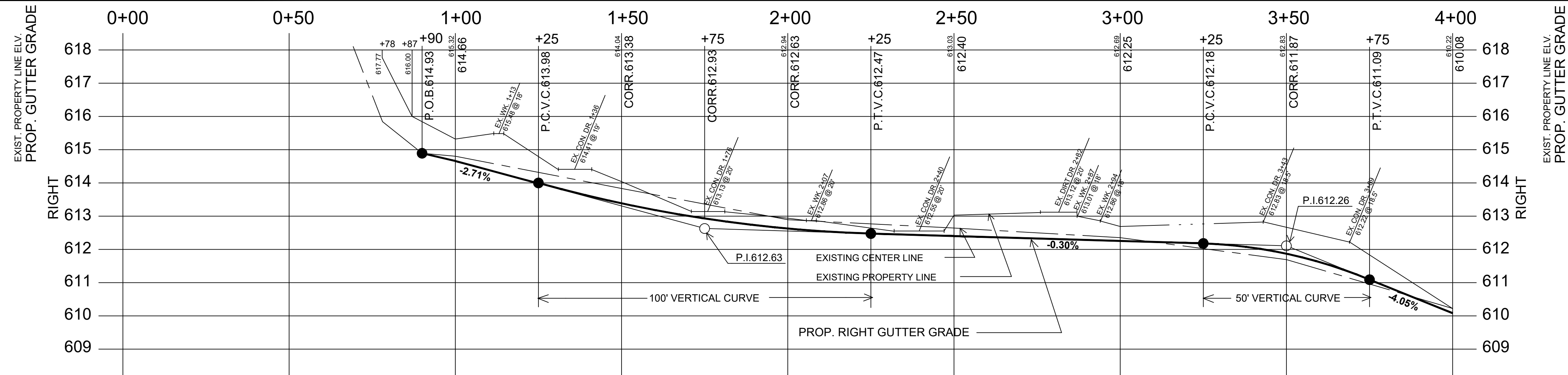
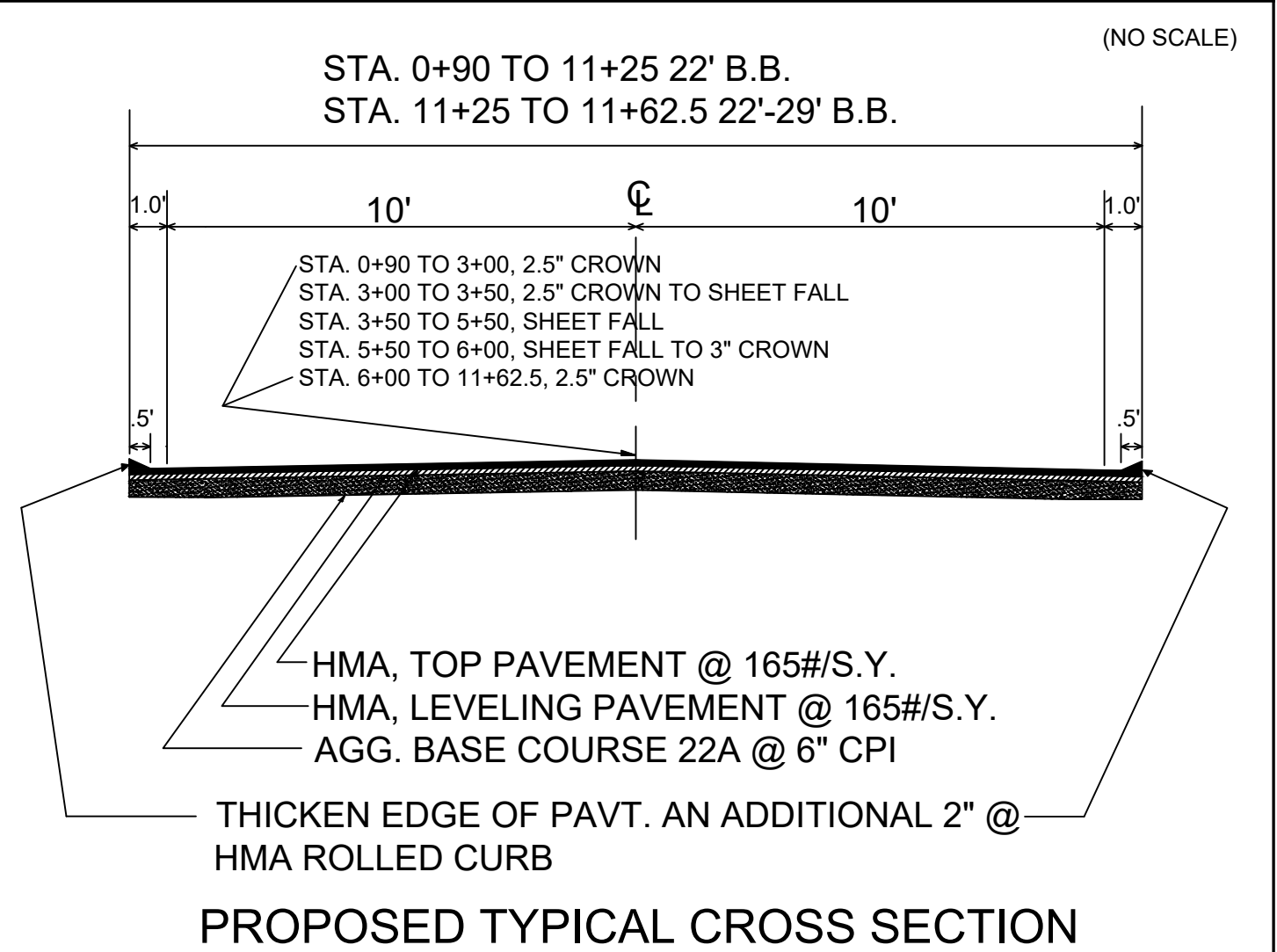
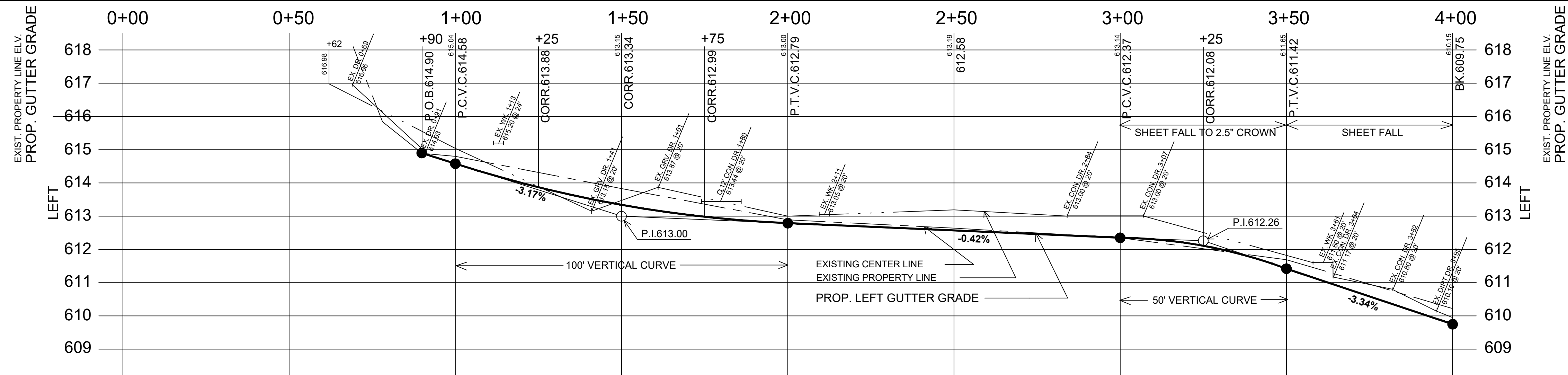
**NOTE:** THERE WILL BE APPROXIMATELY 166 CYD EXCAVATION INCLUDED UNDER THE MACHINE GRADING, MODIFIED PAY ITEM



**1 INCH WATER SERVICE SCHEDULE**

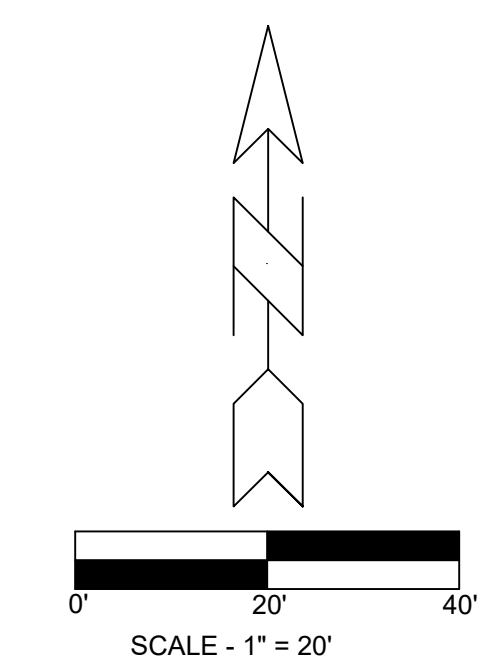
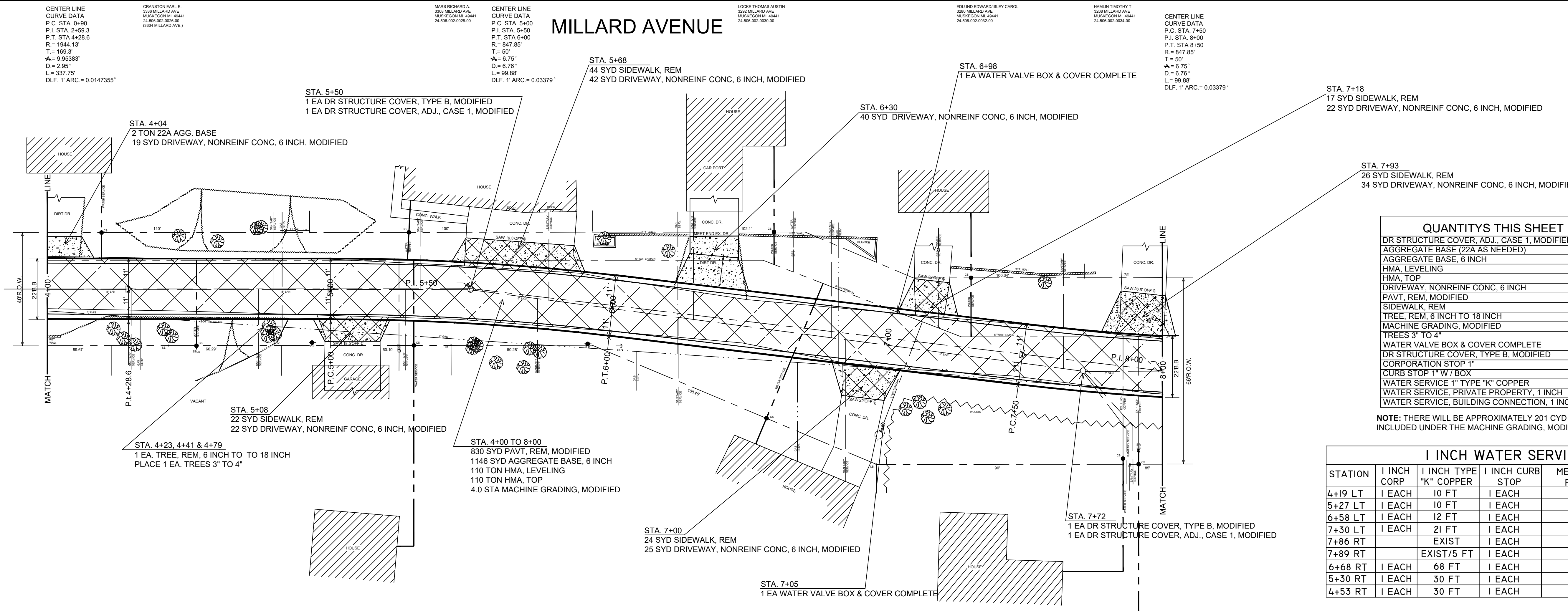
STATION	1 INCH CORP	1 INCH TYPE "K" COPPER	1 INCH CURB STOP	METER PIT	PRIVATE PROPERTY (FT)	BUILDING CONNECTION
1+52 RT	I EACH	34 FT	I EACH		30 FT	I EACH
1+97 RT	I EACH	12 FT	I EACH		7 FT	I EACH
2+61 RT	I EACH	31 FT	I EACH		10 FT	I EACH
3+10 RT	I EACH	30 FT	I EACH		10 FT	I EACH
3+40 RT	I EACH	30 FT	I EACH		26 FT	I EACH
1+51 LT	I EACH	61 FT	I EACH		71 FT	I EACH
1+51 LT	EXIST		I EACH		19 FT	I EACH
2+03 LT	EXIST		I EACH		14 FT	I EACH
2+78 LT	I EACH	10 FT	I EACH		10 FT	I EACH
3+47 LT	I EACH	10 FT	I EACH		3 FT	I EACH

- NOTES**
- PUBLIC UTILITIES OF ALL TYPES HAVE BEEN SHOWN ON THE PLANS USING AVAILABLE INFORMATION BUT ARE NOT GUARANTEED AS ACCURATE OR THAT UTILITIES OTHER THAN THOSE SHOWN ARE NOT PRESENT. THE CONTRACTOR SHALL CALL MISS DIG 3 WORKING DAYS (EXCLUDING SATURDAYS, SUNDAYS AND HOLIDAYS) BEFORE DIGGING. (1-800-482-7171)
  - TRAFFIC CONTROL WILL BE IN ACCORDANCE TO THE MICHIGAN MANUAL OF UNIFORM TRAFFIC CONTROL DEVICES. THE USE OF TYPE I, II AND III LIGHTED BARRICADES WILL BE REQUIRED.
  - ALL SAW CUTTING SHALL BE CONSIDERED INCIDENTAL TO REMOVAL PAY ITEMS.
  - BITUMINOUS BOND COAT @ 0.10 GAL/S.Y. BETWEEN EACH LIFT, IS CONSIDERED INCIDENTAL TO THE PAVING.



<b>CITY OF MUSKEGON</b>		<b>MILLARD AVENUE</b>	
OFFICE OF THE CITY ENGINEER		LAKE DUNE DRIVE TO 1200' WEST	
DRAWN C. SCOTT DEC 00	REVISION C.A.S. MAR 01	SURVEY C.V. JULY 00	<b>H-1520</b>
CHECKED	REVISION C.A.S. FEB 04	AS-BUILT	PROJECT NO
APPROVED	REVISION F.P. AUG 23	SCALE HOR 1"=20', VER 1"=2'	SHEET NO 2 OF 4

# MILLARD AVENUE

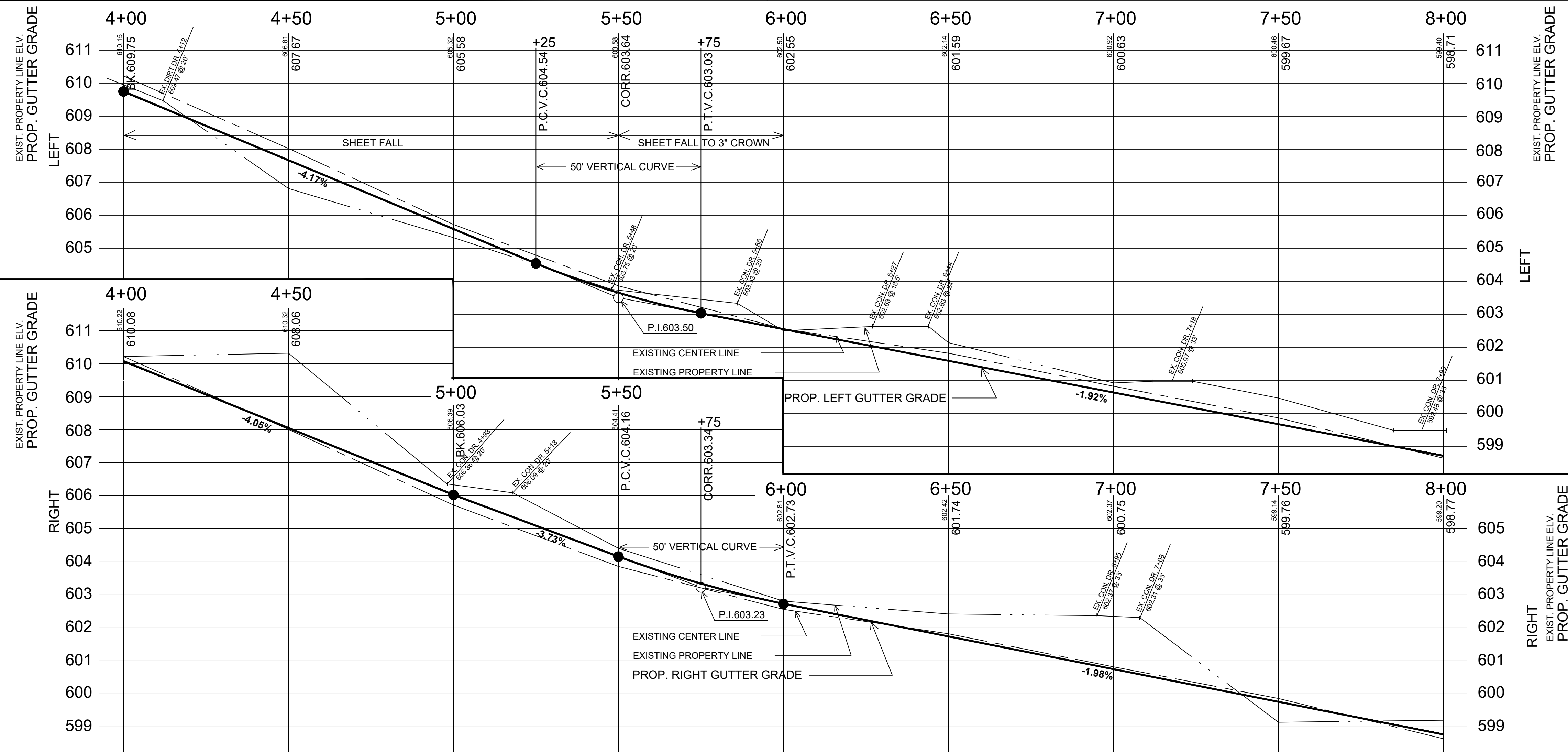


QUANTITIES THIS SHEET		
DR STRUCTURE COVER, ADJ., CASE 1, MODIFIED	2	EA
AGGREGATE BASE (22A AS NEEDED)	2	TON
AGGREGATE BASE, 6 INCH	1146	SYD
HMA LEVELING	110	TON
HMA TOP	110	TON
DRIVEWAY, NONREINF CONC, 6 INCH	204	SYD
PAVT, REM, MODIFIED	830	SYD
SIDEWALK, REM	133	SYD
TREE, REM, 6 INCH TO 18 INCH	1	EA
MACHINE GRADING, MODIFIED	4.0	STA
TREES 3" TO 4"	1	EA
WATER VALVE BOX & COVER COMPLETE	2	EA
DR STRUCTURE COVER, TYPE B, MODIFIED	7	EA
CORPORATION STOP 1"	9	EA
CURB STOP 1" W/ BOX	9	EA
WATER SERVICE 1" TYPE "K" COPPER	186	FT
WATER SERVICE, PRIVATE PROPERTY, 1 INCH	306	FT
WATER SERVICE, BUILDING CONNECTION, 1 INCH	7	EA

NOTE: THERE WILL BE APPROXIMATELY 201 CYD EXCAVATION INCLUDED UNDER THE MACHINE GRADING, MODIFIED PAY ITEM

1 INCH WATER SERVICE SCHEDULE						
STATION	I INCH CORP	I INCH TYPE "K" COPPER	I INCH CURB STOP	METER PIT	PRIVATE PROPERTY (FT)	BUILDING CONNECTION
4+19 LT	1 EACH	10 FT	1 EACH		21 FT	1 EACH
5+27 LT	1 EACH	10 FT	1 EACH		12 FT	1 EACH
6+58 LT	1 EACH	12 FT	1 EACH		31 FT	1 EACH
7+30 LT	1 EACH	21 FT	1 EACH		23 FT	1 EACH
7+86 RT		EXIST	1 EACH		62 FT	1 EACH
7+89 RT		EXIST/5 FT	1 EACH		70 FT	1 EACH
6+68 RT	1 EACH	68 FT	1 EACH		10 FT	1 EACH
5+30 RT	1 EACH	30 FT	1 EACH		77 FT	1 EACH
4+53 RT	1 EACH	30 FT	1 EACH			VACANT

B.M. 603.31 60 P. NAIL IN N. FACE P.P. STA. 5+91 RT.



CITY OF MUSKEGON		MILLARD AVENUE	
OFFICE OF THE CITY ENGINEER		LAKE DUNE DRIVE TO 1200' WEST	
DRAWN C. SCOTT	DEC 00	REVISION C.A.S.	MAR 01
CHECKED		REVISION C.A.S.	FEB 04
APPROVED		REVISION F.P.	AUG 23
SURVEY C.W.		JULY 00	
PROJECT NO		H-1520	
SCALE		HOR 1"=20', VER 1"=2'	
SHEET NO		3	
OF		4	

B.M. 599.01 60 P. NAIL IN S. FACE P.P. STA. 8+48 LT.

LINDSEY ROBERT WATKINS  
3228 MILLARD AVE  
MUSKEGON MI 49841  
24-152-000-0009-00

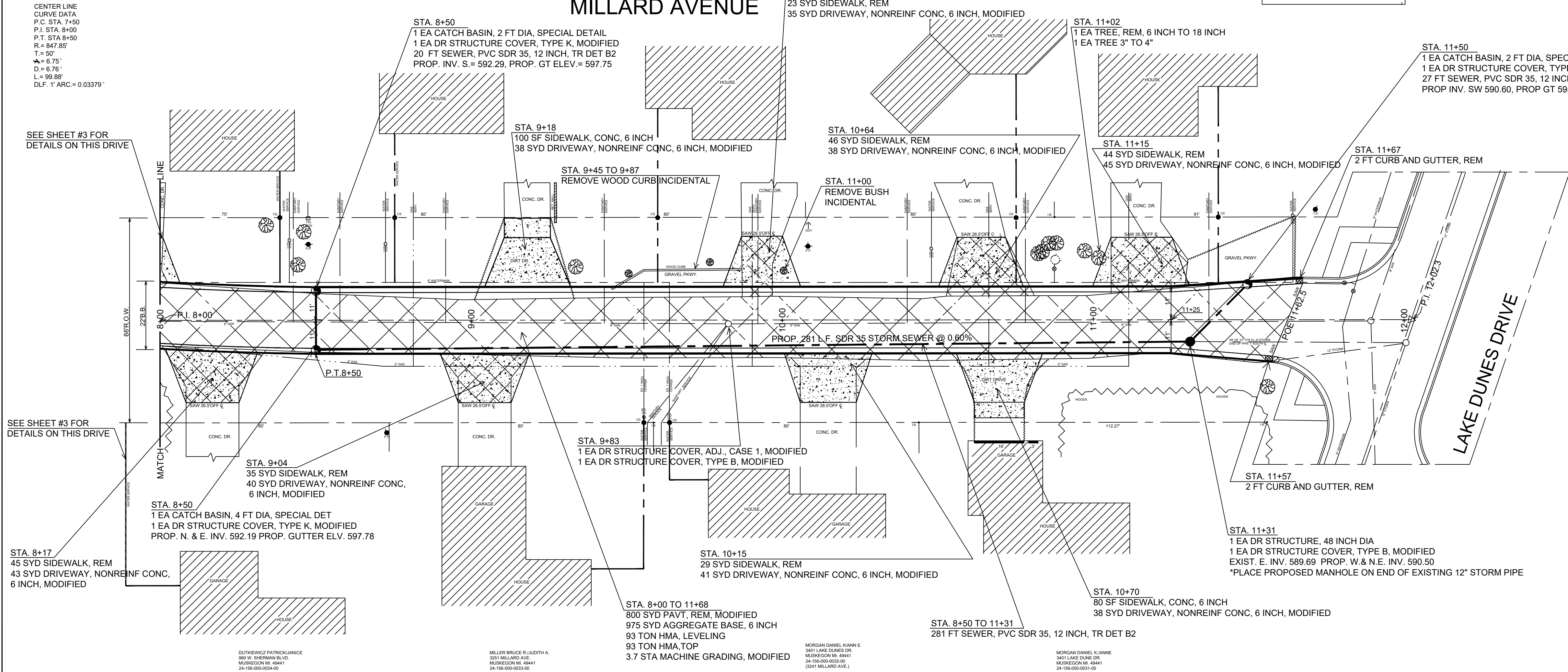
MORGAN MICHAEL J  
3228 MILLARD AVE  
MUSKEGON MI 49841  
24-152-000-0009-00

DUSTIN JONES  
3228 MILLARD AVE  
MUSKEGON MI 49841  
24-152-000-0009-00

BANVEL JONAS BARBARA  
3228 MILLARD AVE  
MUSKEGON MI 49841  
24-152-000-0009-00

B.M. 596.38 60 P. NAIL IN N.W. FACE P.P. N.W. CORNER MILLARD & LAKE DUNES DR.

# MILLARD AVENUE



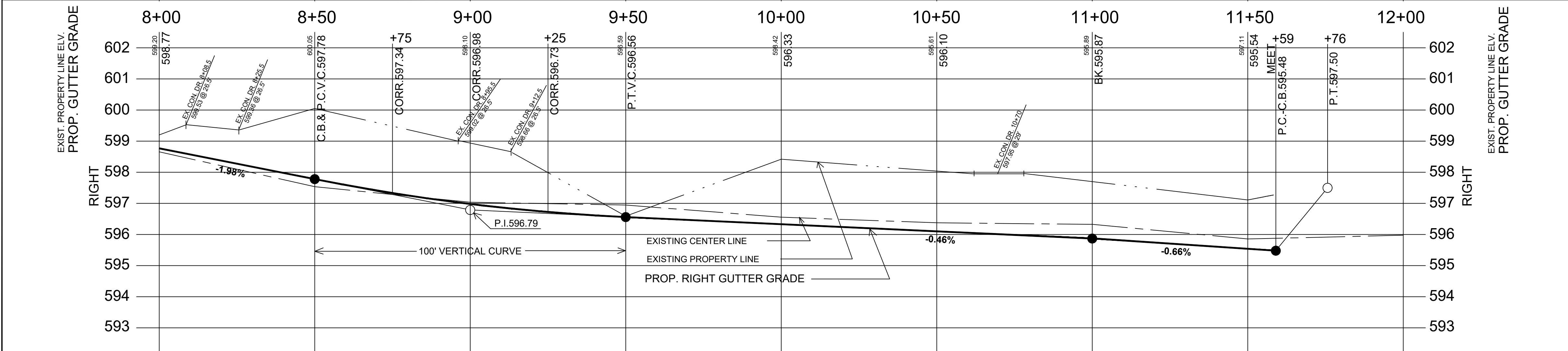
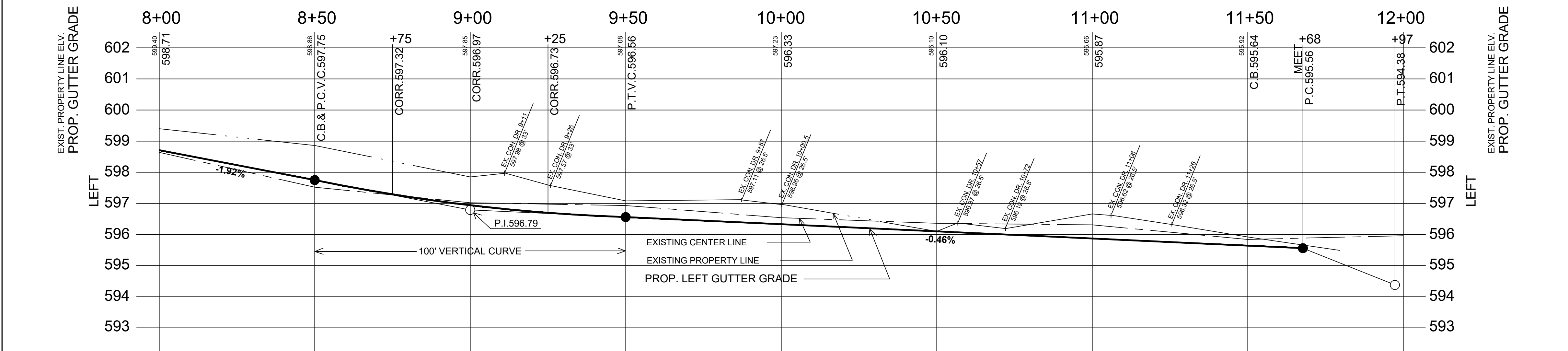
### QUANTITIES THIS SHEET

DR STRUCTURE COVER, ADJ. CASE 1, MODIFIED	1	EA
AGGREGATE BASE, 6 INCH	975	SYD
HMA, LEVELING	93	TON
HMA, TOP	93	TON
DR STRUCTURE COVER, TYPE K, MODIFIED	3	EA
CATCH BASIN, 2 FT DIA, SPECIAL DETAIL	2	EA
CATCH BASIN, 4 FT DIA, SPECIAL DETAIL	1	EA
DRIVEWAY, NONREINF CONC, 6 INCH, MODIFIED	318	SYD
SIDEWALK, CONC, 6 INCH	180	SF
MACHINE GRADING, MODIFIED	3.7	STA
DR STRUCTURE COVER, TYPE B, MODIFIED	2	EA
DR STRUCTURE COVER, 48 INCH DIA	3	EA
PAVT. REM, MODIFIED	800	SYD
SIDEWALK, REM	222	SYD
CURB & GUTTER, REM	4	FT
TREE, REM, 6 INCH TO 18 INCH	1	EA
SEWER, PVC SDR 35, 12 INCH, TR DET B2	328	FT
CORPORATION STOP 1"	5	EA
CURB STOP 1" W/ BOX	7	EA
WATER SERVICE 1" TYPE "K" COPPER	107	FT
WATER SERVICE, PRIVATE PROPERTY, 1 INCH	260	FT
WATER SERVICE, BUILDING CONNECTION, 1 INCH	7	EA

NOTE: THERE WILL BE APPROXIMATELY 189 CYD EXCAVATION INCLUDED UNDER THE MACHINE GRADING, MODIFIED PAY ITEM

### 1 INCH WATER SERVICE SCHEDULE

STATION	I INCH CORP	I INCH TYPE	I INCH CURB STOP	METER PIT	PRIVATE PROPERTY (FT)	BUILDING CONNECTION
8+39 LT	I EACH	21 FT	I EACH		15 FT	I EACH
8+67 LT	I EACH	21 FT	I EACH		27 FT	I EACH
9+60 LT	I EACH	21 FT	I EACH		35 FT	I EACH
10+75 LT	I EACH	21 FT	I EACH		46 FT	I EACH
11+40 LT	I EACH	21 FT	I EACH		42 FT	I EACH
9+64 RT		EXIST	I EACH		31 FT	I EACH
9+56 RT		EXIST/2 FT	I EACH		64 FT	I EACH



<b>CITY OF MUSKEGON</b>		<b>MILLARD AVENUE</b>	
OFFICE OF THE CITY ENGINEER		LAKE DUNE DRIVE TO 1200' WEST	
DRAWN C. SCOTT	DEC 00	REVISION C.A.S.	MAR 01
CHECKED		REVISION C.A.S.	FEB 04
APPROVED		REVISION F.P.	AUG 23
SURVEY C.W.		JULY 00	
AS-BUILT		PROJECT NO	
SCALE HOR 1"=20', VER 1"=2'		SHEET NO 4 OF 4	